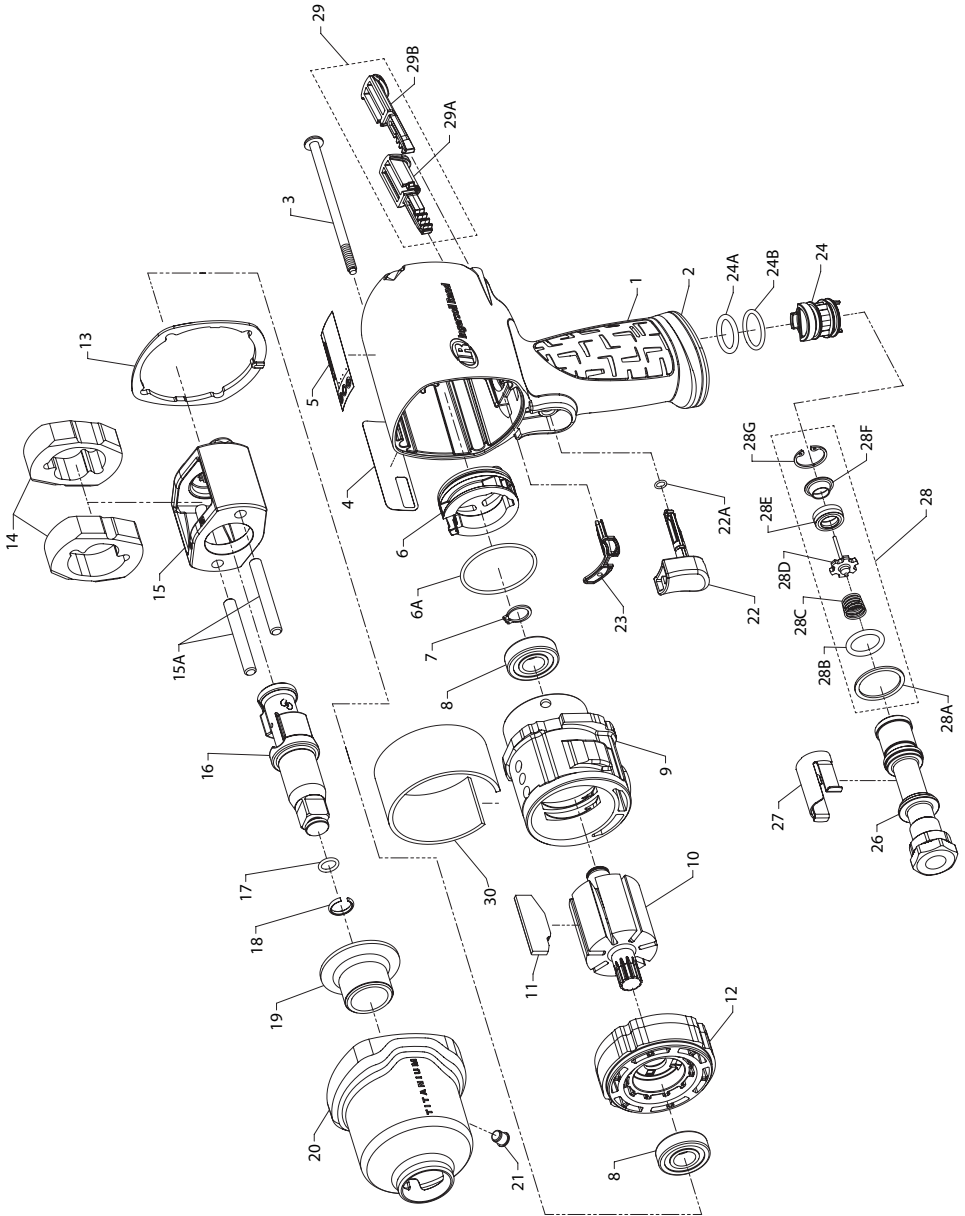


# 2135TiMAX-AP Series Air Impacttool™ - Exploded View



(Dwg. 45536026)

## 2135TiMAX-AP Series Air Impactool™ - Parts List

Item	Part Description	Part Number	Item	Part Description	Part Number
* 1	Housing Assembly		17	O-Ring or Socket Retainer Spring	---
	for model 2135TiMAX-AP	2135TiMAX-AP-A40	18	Socket Retainer	---
	for model 2135Ti-2MAX-AP	2135Ti-2MAX-AP-A40	19	Bushing, Hammer Case	2135-941
	for model 2135QTiMAX-AP	2135QTiMAX-AP-A40	*	Hammer Case Assembly	2135-D727A
	for model 2135QTi-2MAX-AP	2135QTi-2MAX-AP-A40	19	Bushing, Hammer Case	---
	for model 2135PTiMAX-AP	2135PTiMAX-AP-A40	20	Hammer Case	---
	for model 2135QPTiMAX-AP	2135QPTiMAX-AP-A40	21	Grease Fitting	---
1	Housing	---	21	Grease Fitting	130SR-188
2	Exhaust Deflector	---	† *	Trigger Assembly	2135-D93B
4	Information Label	---	22	Trigger	---
5	Warning Label	---	22A	O-Ring, Trigger	---
23	Gasket, Motor	---	† 23	Gasket, Motor	2131-283
*	Reverse Valve Assembly	---	*	Reverse Valve Assembly	2131-A329
29	Button Kit	---	24	Reverse Valve	---
3	Screw, Hammer Case (4 required)	2135-638	24A	O-Ring, Reverse Valve (Top-Black)	---
4	Information Label	---	24B	O-Ring, Reverse Valve (Bottom-Blue)	---
	for model 2135TiMAX-AP	2135TiMAX-AP-300	*	Inlet Bushing Assembly	2135-D565A
	for model 2135Ti-2MAX-AP	2135Ti-2MAX-AP-300	26	Inlet Bushing	---
	for model 2135QTiMAX-AP	2135QTiMAX-AP-300	27	Inlet Clip	2131-57
	for model 2135QTi-2MAX-AP	2135QTi-2MAX-AP-300	28	Inlet Parts Kit	2135-K303
	for model 2135PTiMAX-AP	2135PTiMAX-AP-300	28A	Washer	---
	for model 2135QPTiMAX-AP	2135QPTiMAX-AP-300	28B	O-Ring, Seal	---
5	Warning Label	WARNING-2-99	28C	Throttle Spring	---
*	Power Regulator Assembly	2135-D249A	28D	Throttle Valve	---
6	Power Regulator	---	28E	Valve Seat	---
6A	O-Ring, Power Regulator	---	28F	Seat Support	---
7	Retaining Ring	2131-6	28G	Retainer	---
8	Ball Bearing (2 required)	2131-97	29	Button Kit	2135-K75
9	Cylinder	2135-3	29A	Forward Button	---
10	Rotor	2135-53	29B	Reverse Button	---
† 11	Vane Pack (set of 7)	2135-42A-7	30	Silencer (for models 2135QTiMAX-AP, 2135QTi-2MAX-AP, and 2135QPTiMAX-AP)	2131QT-311
12	End Plate	2131-11	*	Tune-Up Kit	2135-TK2
† 13	Hammer Case Gasket	2135-36	6A	O-Ring, Power Regulator	---
*	Hammer Kit	---	7	Retaining Ring	---
	for models 2135TiMAX-AP and 2135QTiMAX-AP	2135-THK1	8	Ball Bearing (2)	---
	for models 2135Ti-2MAX-AP and 2135QTi-2MAX-AP	2135-2-THK1	11	Vane Pack (set of 7)	---
	for models 2135PTiMAX-AP and 2135QPTiMAX-AP	2135PTi-THK1	13	Hammer Case Gasket	---
13	Hammer Case Gasket	---	17	O-Ring	---
14	Hammer (2)	---	18	Socket Retainer	---
15A	Hammer Pin (2)	---	22A	O-Ring, Trigger	---
*	Anvil Assembly	---	23	Gasket, Motor	---
*	Kit Grease	---	24A	O-Ring, Reverse Valve (Top-Black)	---
*	Hammer Frame Kit	2135-K703	24B	O-Ring, Reverse Valve (Bottom-Blue)	---
15	Hammer Frame	---	28	Inlet Parts Kit	---
15A	Hammer Pin (2)	---	*	Inlet Clip Removal Tool	2131-322
*	Kit Grease	---	† *	Air Care Kit (grease gun, grease, oil)	115-LBK1
*	Anvil Assembly	---	*	Grease (replacement tube for -LBK1)	115-4T
	for models 2135TiMAX-AP and 2135QTiMAX-AP	231B-A626	*	Air Tool Oil (4 oz. bottle)	1024
	for models 2135Ti-2MAX-AP and 2135QTi-2MAX-AP	231B-A414	*	Grease (1 lb can)	105-1LB
	for models 2135PTiMAX-AP and 2135QPTiMAX-AP	231B-A726	*	Grease (8 lb can)	105-8LB
16	Anvil	---	*	Grease Gun	R000A2-228
*	Socket Retainer Kit	---	* Not illustrated.		
† *	Socket Retainer Kit	---	† To keep downtime to a minimum, it is desirable to have certain repair parts on hand. We recommend that you stock one (pair or set) of each part indicated by a (†) for every four tools in service.		
	for models 2135TiMAX-AP, 2135QTiMAX-AP, 2135Ti-2MAX-AP, and 2135QTi-2MAX-AP (1/2" Ring-type)	2125QTi-K425			
	for models 2135PTiMAX-AP and 2135QPTiMAX-AP (1/2" Pin-type)	2125PTi-K425			

## Parts and Maintenance

When the life of the tool has expired, it is recommended that the tool be disassembled, degraded and parts be separated by material so that they can be recycled.

Tool repair and maintenance should only be carried out by an authorized Service Center.

Refer all communications to the nearest **Ingersoll Rand** Office or Distributor.

## Related Documentation

For additional information refer to:

Air Impact Wrench Product Safety Information Manual 04580916.

Air Impact Wrench Product Information Manual 45534062.

Manuals can be downloaded from [www.ingersollrandproducts.com](http://www.ingersollrandproducts.com).



[www.ingersollrandproducts.com](http://www.ingersollrandproducts.com)  
© 2011 **Ingersoll-Rand** Company

**48390850**  
Edition 1  
August 2011