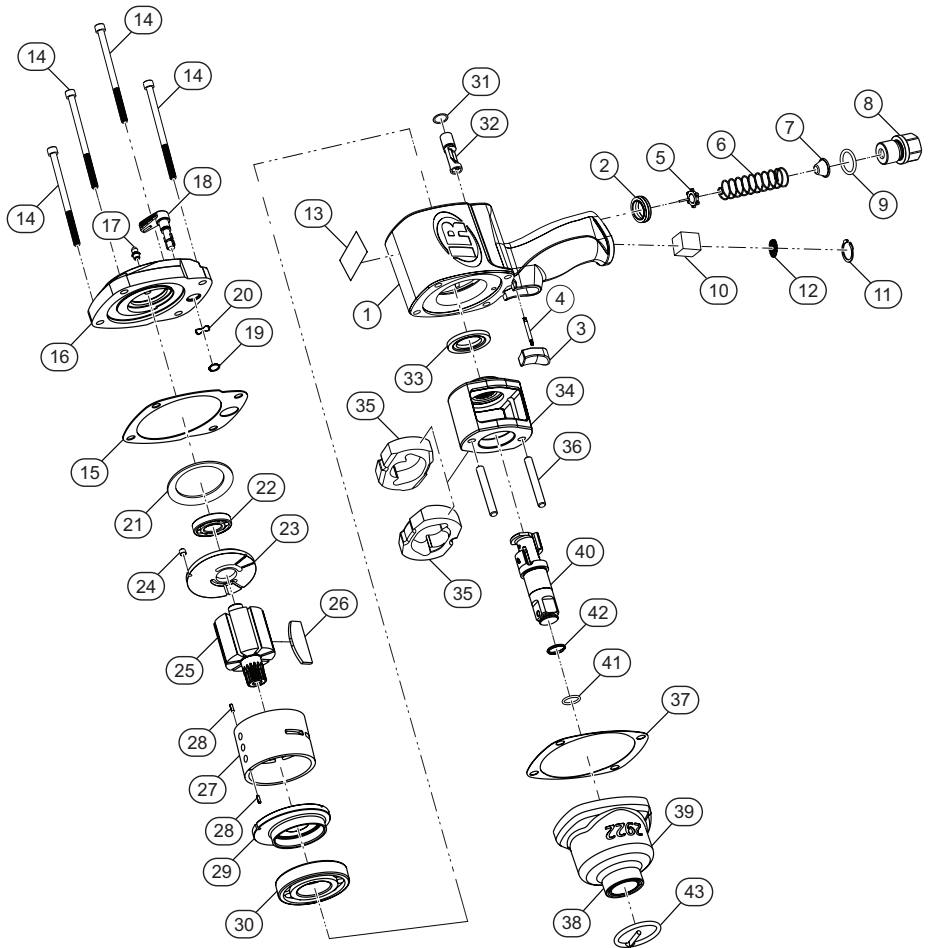


2922 Series, Air Impact Wrench - Exploded View



(Dwg. TPA1580-2)

## 2922 Series, Air Impact Wrench - Parts List

| Item | Part Description            | Part Number  | Item | Part Description                                      | Part Number |
|------|-----------------------------|--------------|------|---|-------------|
|      | Motor Housing Assembly      | TA-2922-40   | 29   | Front End Plate                                       | 2161-11     |
| 1    | Motor Housing               | ---          | 30   | Front Rotor Bearing                                   | 834-24      |
| 2    | Throttle Valve Seat         | DG230-303    | † 31 | Reverse Valve O-Ring                                  | 023446      |
|      | Trigger Assembly            | 2161-A93R    | 32   | Reverse Valve   | 2161-329    |
| 3    | Trigger                     | 2161-93R     | 33   | Hammer Frame Washer                                   | 2161-706    |
| 4    | Trigger Pin                 | 2161-94      | 34   | Hammer Frame  | 2925-703    |
| 5    | Throttle Valve              | 2921-302     | 35   | Hammer (2 required)                                   | 2925-724    |
| 6    | Throttle Valve Spring       | 2161-51      | 36   | Hammer Pin (2 required)                               | 2910-704    |
| 7    | Air Strainer Screen         | 834-61       | † 37 | Hammer Case Gasket                                    | 2161-36     |
|      | Inlet Bushing Assembly      | 2161-A465A   |      | Hammer Case Assembly                                  | TD-2922-727 |
| 8    | Inlet Bushing               | 2161-465A    | 38   | Hammer Case Bushing                                   | 2161-641    |
| 9    | Seal                        | R4-210       | 39   | Hammer Case   | ---         |
| 10   | Muffler Element             | 202-311      | 40   | Anvil   |             |
| 11   | Retaining Ring              | 2161-118     |      | for 3/4" Thru-Hole and Hog-Ring                       | TA-2922-626 |
| 12   | Exhaust Deflector           | 2161-23      |      | for 3/4" Thru-Hole only                               | 2910-726    |
| 13   | Warning Label               | WARNING-2-99 |      | for 1" Thru-Hole and Hog-Ring                         | 2080-A726   |
| 14   | Backcap Bolt (4 required)   | 2925-638     |      | for 1" Thru-Hole only                                 | 2910-826    |
| † 15 | Backcap Gasket              | 2161-739     | *    | Socket Retainer Kit (Hog-Ring)                        |             |
|      | Backcap Assembly            | TA-2922-102  |      | for TA-2922-626                                       | 2145-K425   |
| 16   | Backcap                     | ---          |      | for 2080-A726   | 2155-K425   |
| 17   | Grease Fitting              | R1-188       | 41   | O-Ring  | ---         |
| 18   | Reverse Lever               | 2925-658     | 42   | Retainer Clip   | ---         |
| 19   | Reverse Lever Snap Ring     | 2161-28      | 43   | Thru-Hole Socket Retainer                             |             |
| 20   | Reverse Lever Spring        | 2161-278     |      | for 3/4"  | RR100345    |
| 21   | Motor Clamp Washer          | 2161-207     |      | for 1"  | RR100155    |
| 22   | Rear Rotor Bearing          | 4E-510       | *    | Hanger Kit  | 2161-366    |
| 23   | Rear End Plate              | 2161-12      | *    | Piped-Away Exhaust (accepts 1/2"-14 NPT male-fitting) | 2161-123    |
| 24   | Locating Pin                | 2920-74      | *    | Grease  |             |
| 25   | Rotor                       | 2080-53      |      | 1 lb.   | 170-1LB     |
| † 26 | Vane Packet (set of 7)      | 2925-42-7    |      | 8 lb.   | 170-8LB     |
|      | Cylinder Assembly           | 2925-A3      |      |   |             |
| 27   | Cylinder                    | 2925-3       |      |   |             |
| 28   | Cylinder Dowel (2 required) | JC3350-538   |      |   |             |

\* Indicates not illustrated.

† Indicates common-wear parts. Maintain stock to reduce downtime.

## Parts and Maintenance

When tool life has expired, it is recommended that the tool be disassembled, degreased and parts separated by material for proper recycling.

Tool repair and maintenance should only be carried out by an authorized Service Center.

Refer all communications to the nearest **Ingersoll Rand** office or distributor.

## Related Documentation

Manuals can be downloaded from [ingersollrand.com](http://ingersollrand.com)

For additional information, refer to:

Product Safety Information Manual 04580916

Product Information Manual TL-2922-PIM

Product Maintenance Manual TL-2922-MIM

Declaration of Conformity TL-2922-DOC