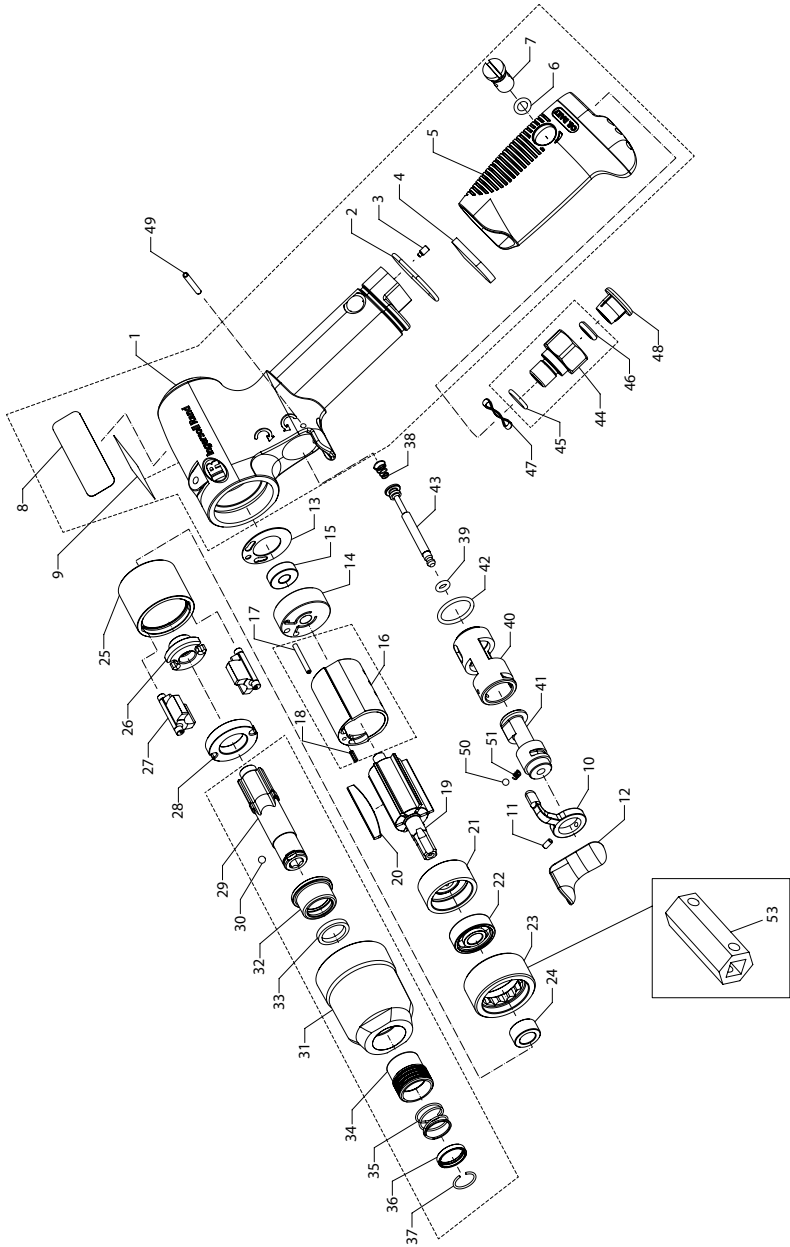


QIP08Q4 and QIP14Q4, Air Impact Screwdriver - Exploded View



(Dwg. 45738242)

QIP08Q4 and QIP14Q4, Air Impact Screwdriver - Parts List

Item	Part Description	Part Number	Item	Part Description	Part Number
1	Housing Assembly		24	Hammer Cam Spacer	JQ2-442
	for QIP08Q4	JQP1-A40	25	Hammer Frame	JQ2-703
	for QIP14Q4	JQP2-A40	26	Hammer Cam	JQ2-721
2	O-Ring	JQP-557	27	Hammer (2)	JQ2-724
3	Screw	JQP-33	28	Side Plate	JQ2-706
4	Exhaust Silencer	JQP-311	29	Anvil Assembly	JQP2-A726
5	Grip Assembly	JQP-747A	30	Ball	W040-696
6	O-Ring	JQ-283	31	Hammer Case	JQP2-727
7	Regulator	JQP-249	32	Anvil Bushing	JQ-641
8	Tool Label		33	Felt Ring	JQ-642
	for QIP08Q4	QIP08Q4-301	34	Bit Sleeve	JQ-930
	for QIP14Q4	QIP14Q4-301	35	Bit Sleeve Spring	JQ-931
9	Warning Label	WARNING-27-99	36	Bit Sleeve Spacer	JQ-591
10	Reverse Knob	JQP-38	37	Bit Snap Ring	JQ-426
11	Set Screw	JQP-262	38	Spring	JQP-51
12	Trigger	JQP-93	39	O-Ring	301-159
13	Endplate Gasket	JQP1-223	40	Reverse Bushing	JQP-302
14	Rear Endplate	JQP1-12	41	Reverse Valve	JQP-329
15	Bearing	301-22	42	O-Ring	JQP-566
16	Cylinder Assembly		43	Throttle Stem	JQP-50
	for QIP08Q4	JQP1-A3	44	Inlet Bushing Assembly	JQP-A565X
	for QIP14Q4	JQP2-A3	45	O-Ring	JQP-202
17	Spring Pin	308A-739	46	Inlet Screen	131-61
18	Pin	170-535	47	Washer	JQP-52
19	Rotor		48	Plastic Plug	PF-PLUG
	for QIP08Q4	JQ1-53	49	Pin	JQP-504
	for QIP14Q4	JQ2-53	50	Ball	AV1-255
20	Vane Pack (set of 6)		51	Spring Pin	103A-718
	for QIP08Q4	JQ1-42-6		Bail	7L-365
	for QIP14Q4	JQ2-42-6		Motor Kit (includes 13,14,15,16,17,18,19,20, 21,22)	
21	Front Endplate	JQ1-11		for QIP08Q4	JQP1-TMK
22	Bearing	308A-22		for QIP14Q4	JQP2-TMK
23	Coupling Clamp	JQ2-406		Mechanism Kit (includes 25, 26, 27(2), 28, 29)	JQP2-THK
			*53	Hex. Socket (used for disassembling item 23)	JQ-406-F

* Sold Separately.

Parts and Maintenance

When the life of the tool has expired, it is recommended that the tool be disassembled, degreased and parts be separated by material so that they can be recycled.

Tool repair and maintenance should only be carried out by an authorized Service Center.

Refer all communications to the nearest **Ingersoll Rand** Office or Distributor.

Related Documentation

For additional information refer to:
 Product Safety Information Manual 04580916.
 Product Information Manual 45738879.

Manuals can be downloaded from ingersollrandproducts.com

