



Ingersoll Rand®

# 2236QTiMAX IMPACT WRENCH

**DXS**  Drive Xchange System™



2236QTiMAX-O



2236QTiMAX-G



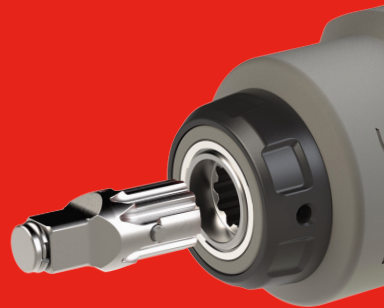
2236QTiMAX-R

2236QTiMAX  
HIGH VISIBILITY IMPACT WRENCH

**WHY OUR NEW  
PATENTED IMPACT  
WRENCH IS THE  
BEST CHOICE**

### VERSATILE

Interchangeable drives can quickly configure this tool for the job without losing power, increasing size, or needing more tools



# POWER YOU CAN SEE.

The 2236QTiMAX High Visibility Series 1/2" Impact Wrench: 2236QTiMAX-O, 2236QTiMAX-G, & 2236QTiMAX-R

The Ingersoll Rand® 2236 MAX High Visibility Series, 2236QTiMAX-O (orange), 2236QTiMAX-G (green), and 2236QTiMAX-R (red), provide the power you know and trust in three vibrant colors. The power, durability, and reliability of this 1/2" air Impact Wrench is unsurpassed in the industrial and vehicle service market. Available in orange, green, and red for technicians who want to customize their toolbox and have visibility to their tool on the job and in the garage.

Versatility meets power in the new 2236 MAX Series 1/2" pneumatic impact wrench. The patented\* Drive Xchange System™ lets you switch out anvils without clunky adapters that drain your tool's power.

Longer life and reliability from a patented direct greasing design

Titanium hammer case is lightweight with unyielding durability

1,500 ft-lbs of nut busting torque from a patented motor design\*\*

4 decibels quieter for a more user-friendly environment\*\*\*

Better access to tight spaces with length under 7.4"

Reduced fatigue from lower weight, better balance

More versatility with patented DXS® Drive Xchange System™

**DXS 2**

**Anvil Included:**  
1/2" Std Friction Ring  
A41H

**Other Interchangeable Anvils Available:**  
3/8", 1/2", and 3/4" drive options and five lengths from 2" to 10" (Sold Separately)

**Available in Three Colors**

Model	Color	Includes Drive Size	Breakaway Torque ft-lbs (Nm)	Impact Per Minute (BPM)	MAX Free Speed (RPM)	Impacting Sound Level dB(A)	Weight lbs (kg)	Length in (mm)	Air Inlet (NPTF/NPT)	Min Hose Size in (mm)
2236QTiMAX-O	Orange	1/2" Std Anvil	1500 (2034)	1350	7500	94.2	4.4 (1.99)	7.36 (187)	1/4"	3/8 (10)
2236QTiMAX-G	Green	1/2" Std Anvil	1500 (2034)	1350	7500	94.2	4.4 (1.99)	7.36 (187)	1/4"	3/8 (10)
2236QTiMAX-R	Red	1/2" Std Anvil	1500 (2034)	1350	7500	94.2	4.4 (1.99)	7.36 (187)	1/4"	3/8 (10)

\* Global Patents Pending, \*\* Compared to 2235QTiMAX, \*\*\* Compared to 2235TiMAX



Learn more at [www.irttools.com](http://www.irttools.com)

Ingersoll Rand (NYSE:IR), driven by an entrepreneurial spirit and ownership mindset, is dedicated to helping make life better for our employees, customers, and communities. Customers lean on us for our technology-driven excellence in mission-critical flow creation and industrial solutions across 40+ respected brands where our products and services excel in the most complex and harsh conditions. Our employees develop customers for life through their daily commitment to expertise, productivity, and efficiency.

©2024 Ingersoll Rand. PTL\_299\_04\_2024\_2236\_HiViz\_flyer