



04584421
Edition 3
October 2013

Air Impact Wrench

2906P Series

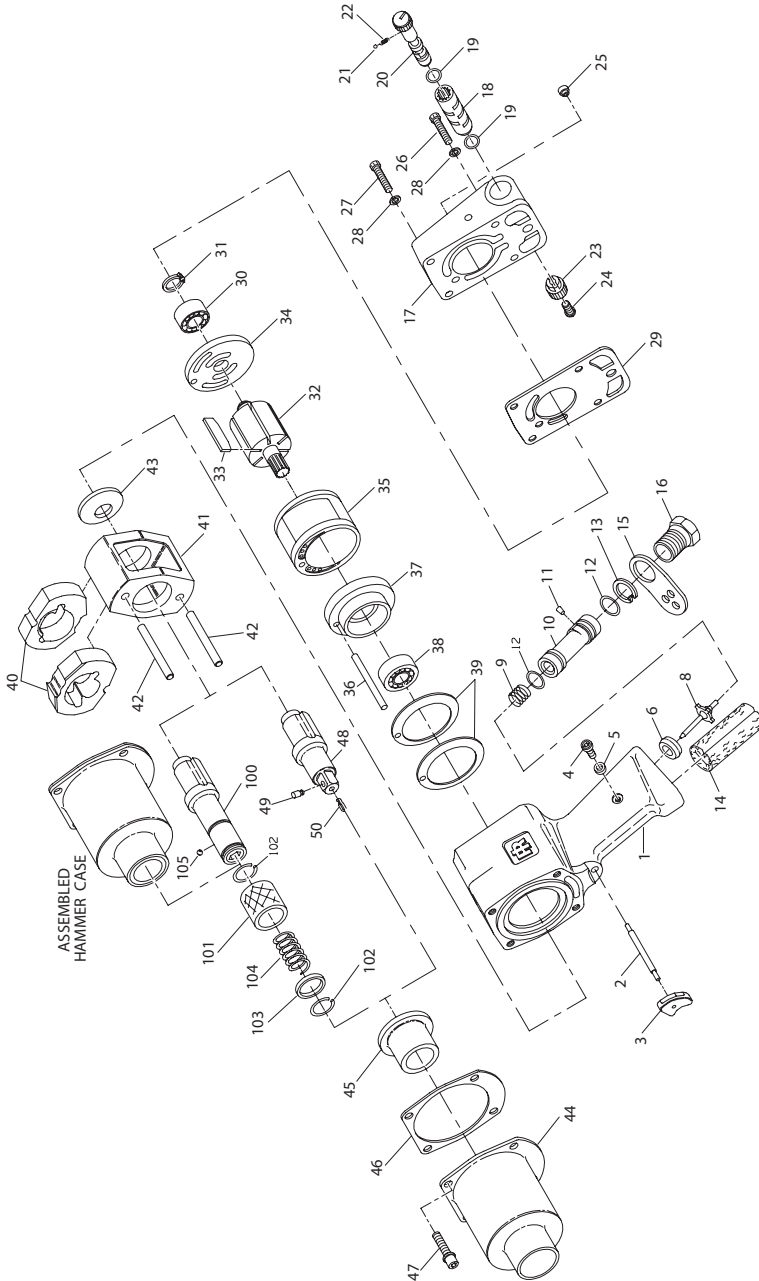
Parts Information



Save These Instructions

IR *Ingersoll Rand*

2906P Series Air Impact Wrench - Exploded View



(Dwg. TPA1112-4)

2906P Series Air Impact Wrench - Parts List

Item	Part Description	Part Number	Item	Part Description	Part Number
1	Motor Housing Assembly	2906P-A40	35	Cylinder	904-3
	Trigger Assembly	7AH-A93	36	Cylinder Dowel	2906P-98
2	Trigger Pin	7AH-94	• 37	Front End Plate	2906P-11
3	Trigger	5RA-93	†• 38	Front Rotor Bearing	4U-97
4	Oil Chamber Plug	D92-227	39	Motor Clamp Washer (2)	804-207
†• 5	Oil Chamber Plug Seal	R3-92A	40	Hammer (2)	231XP-724
† 6	Throttle Valve Seat	2908-303	41	Hammer Frame Assembly	231XP-A703
† 8	Throttle Valve	LG2-302	42	Hammer Pin (2)	231-704
† 9	Throttle Valve Spring	2908-51	43	Hammer Frame Washer	2906P-706
10	Oiler Body Assembly	2905P-A198	44	Hammer Case Assembly	
11	Oiler Plug	77H-75		for 2906P1 and 2906P7	2906P-A727
†• 12	Oiler Body Seal (2)	AF120-290		for 2906P1-EU and 2906P7-EU	2906P-EU-A727
13	Oiler Retaining Ring	2908-304	45	Hammer Case Bushing	705-941
† 14	Exhaust Silencer	2905P-311	*	Hammer Case Label	
15	Exhaust Deflector	2905P-23		for 2906P1 and 2906P7	WARNING-2-99
16	Air Inlet	402-565		for 2906P1-EU and 2906P7-EU	EU-99
	Housing Cover Assembly	2906P-A202		† 46	Hammer Case Gasket
17	Housing Cover	2906P-202	47	Hammer Case Cap Screw (4)	2903P-638
18	Reverse Valve Bushing Assembly	231-A330	48	Anvil Assembly (with Pin-type Retainer)	
†• 19	Reverse Valve Bushing Seal (2)	P53-67		for 1/2" Square Drive	2904-P726
20	Reverse Valve	231-329A		for 5/8" Square Drive	2904-P826
† 21	Reverse Valve Detent Ball	AV1-255	† 49	Socket Retaining Plunger	
† 22	Reverse Valve Detent Spring	231-664		for 1/2" Square Drive	804-716
23	Reverse Valve Knob	231-666		for 5/8" Square Drive	808-716
24	Reverse Valve Knob Screw	231-665	† 50	Plunger Spring	SUHD-718
25	Grease Fitting	130SR-188		Quick-Change Anvil Assembly	705-A926A-7
+ *	Nameplate		100	Quick-Change Anvil	705-926A-7
	for 2906P1 and 2906P7	2906P-301	101	Retaining Sleeve	4U-930-7
	for 2906P1-EU and 2906P7-EU	2906P-EU-301	102	Thrust Ring Lock (2)	4U-933-7
26	Housing Cover Cap Screw (2) (long)	4U-638	103	Thrust Ring	4U-932-7
27	Housing Cover Cap Screw (2) (short)	2906P-638	104	Retaining Sleeve Spring	4U-931-7
28	Housing Cover Lock Washer (4)	4U-58	105	Retaining Ball (7/32" diameter) (2)	2U-722
† 29	Housing Cover Gasket	2906P-283	*	Vertical Hanger	2908-365
†• 30	Rear Rotor Bearing	402-22	*	Horizontal Hanger	904-366
† 31	Rear Rotor Bearing Retainer	402-118	*	Grease Gun	R000A2-228
32	Rotor	244-53	*	Tune-up Kit (includes illustrated items 5, 6, 8, 9, 12 [2], 14, 19 [2], 21, 22, 29, 30, 31, 33, 38, 46, 49 and 50)	2906P-TK1
†• 33	Vane Packet (set of 6 Vanes)	2906P-42-6			
• 34	Rear End Plate	231-12			

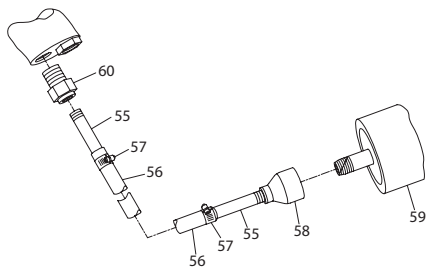
* Not illustrated.

† Indicates Tune-up Kit Part.

+ We recommend that a new Nameplate be ordered with each Housing Cover.

• To keep downtime to a minimum, it is desirable to have on hand certain repair parts. We recommend that you stock one (pair or set) of each part indicated by a bullet (•) for every four tools in service.

Accessories and Special Equipment



(Dwg. TPC453)

Item	Part Description	Part Number
	Piped Away Exhaust Kit	
	with Muffler	2905-KM184
	with Muffler and Coupling	2905-K184
55	Hose Adapter (2)	2905-167
56	Exhaust Hose (10 ft. long)	2905-184
57	Hose Clamp (2)	2905-185
58	Muffler Coupling	2905-186
59	Muffler	2905-674
60	Reducing Bushing	H80-82A

Parts and Maintenance

When the life of the tool has expired, it is recommended that the tool be disassembled, degreased and parts be separated by material so that they can be recycled.

Tool repair and maintenance should only be carried out by an authorized Service Center.

Refer all communications to the nearest **Ingersoll Rand** Office or Distributor.

Related Documentation

For additional information refer to:

Air Impact Wrench Product Safety Information Manual Form 04580916.

Air Impact Wrench Product Information Manual Form 04584801.

Air Impact Wrench Maintenance Information Manual Form 04584272.

Manuals can be downloaded from ingersollrandproducts.com

ingersollrandproducts.com

© 2013 Ingersoll Rand

 **Ingersoll Rand**