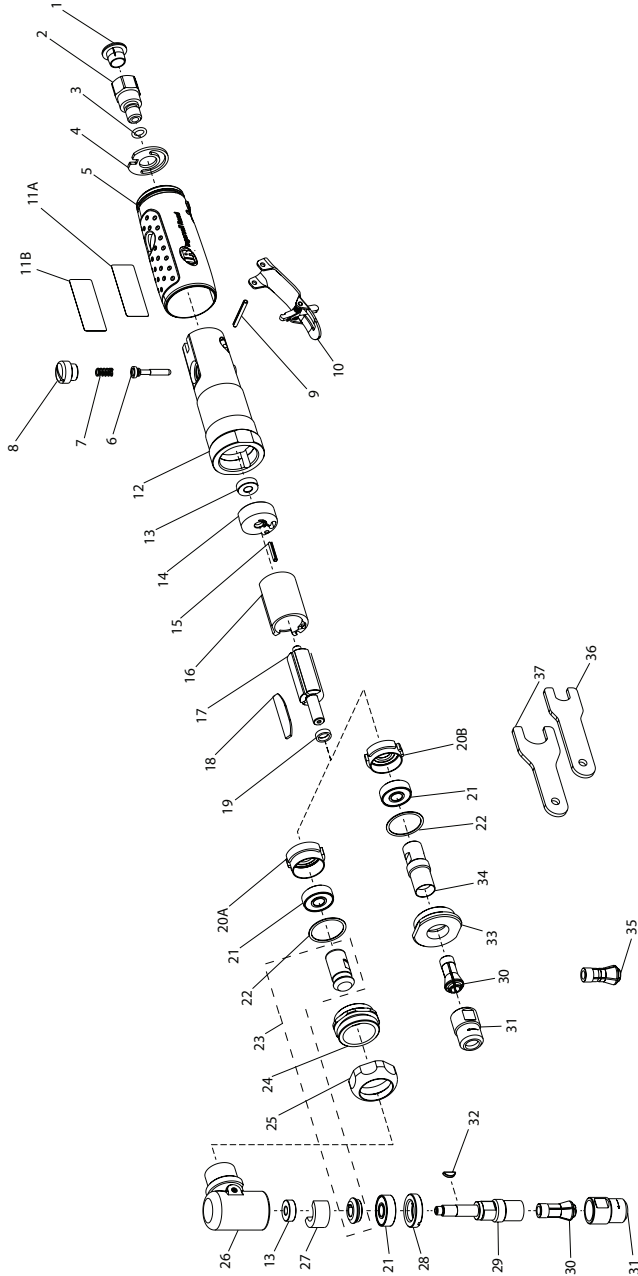


302B, 308B, 302B-M and 308B-M Air Die Grinder - Exploded View



(Dwg. 48489850)



302B, 308B, 302B-M and 308B-M Air Die Grinder - Parts List

Item	Part Description	Part Number	Item	Part Description	Part Number
1	Plastic Plug	PF-PLUG	18	Vane Pack (set of 4)	3102-42-4
2	Inlet Bushing Assembly	308B-A565	*	Vane	--
*	Inlet Bushing	--	19	Spacer	301-A11
*	Inlet Screen	--	20A	Front Endplate Assembly (for 302B)	301-448
3	O-Ring	301-251	20B	Front Endplate Assembly (for 308B)	307A-A11
4	Gasket	3102-283	21	Bearing	301-24
5	Sleeve	308B-747	22	Gasket	3101G-36
6	Throttle Valve Assembly	3102-302A	23	Gear Pinion Set (for 302B)	3102-A552-1.25
7	Spring	3102-51	*	Gear (for 302B)	--
8	Valve Cap Assembly	3102-A266	*	Pinion (for 302B)	--
9	Spring Pin	3101G-504	24	Clamp Nut (for 302B)	3102-306
10	Lever Assembly	308B-A400	25	Nut (for 302B)	3102-27
*	Latch	--	26	Angle Housing (for 302B)	302B-A550
*	Lever	--	*	Elbow (for 302B)	--
*	Spring	--	*	Grease Fitting (for 302B)	--
*	Spring Pin	--	27	Wick (for 302B)	302A-560
11A	Tool Label (for 302B)	302B-301	28	Cap (for 302B)	301-531
	Tool Label (for 302B-M)	302B-M-301	29	Arbor Kit (for 302B)	301-K591A
11B	Tool Label (for 308B)	308B-301	*	Collet Arbor (for 302B)	--
	Tool Label (for 308B-M)	308B-M-301	*	Spacer (for 302B)	--
12	Housing Assembly	308B-A40	30	Collet, 1/4in	301-700
*	Housing-die Cast	--	31	Collet Nut	301-699
*	Valve Bushing	--	32	Pinion Key (for 302B)	301-579
13	Bearing	301-22	33	Lock Nut (for 308B)	3108-27
14	Rear End Plate	3102-12	34	Collet Body (for 308B)	307A-214
15	Spring Pin	3101G-504A	35	Collet 6mm	301-700B
16	Cylinder	3102-3	36	Collet Body Wrench	301-69A
17	Rotor	3102-53	37	Collet Nut Wrench	301-69B

* Indicates not illustrated.

Parts and Maintenance

When tool life has expired, it is recommended that the tool be disassembled, degreased and parts separated by material for proper recycling.

Tool repair and maintenance should only be carried out by an authorized Service Center.

Refer all communications to the nearest **Ingersoll Rand** office or distributor.

Related Documentation

Manuals can be downloaded from ingersollrand.com

For additional information, refer to:

Product Safety Information Manual 04580288.

Product Information Manual 48483689.

Declaration of Conformity 47624083001.

