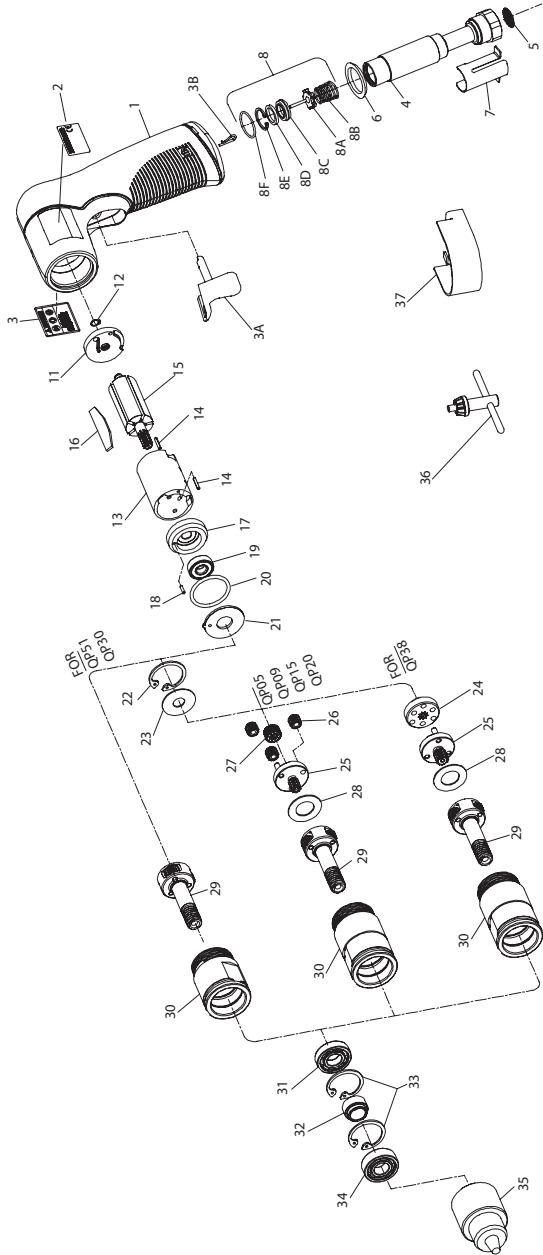


QP Series Air Drill Exploded Diagram



(Dwg. TPA1738-1)



QP Series Air Drill Parts List

| Item | Part Description | Part Number | Item | Part Description | Part Number |
|------|---|-------------|--------------------------------|--|---|
| 1 | Motor Housing | | 25 | Planet Gear Head Assembly (includes gear shafts) | |
| † | for Models with memory chip | TRD-A40A | | for Series QP05 and QP09 | TRH-A2169-16 |
| | for Models without memory chip | TRD-A40A-NC | | for Series QP15 | TRH-A2169-12 |
| 2 | Nameplate | TRH-301 | | for Series QP20 | TRH-A2169-10 |
| 3 | Warning Label | TRH-99 | | for Series QP38 | TRH-A216-12 |
| 3A | Trigger Assembly | TRD-A93 | 26 | Planet Gear (3 for each Gear Head) | |
| 3B | Trigger Retainer | TRD-18 | | for Series QP05 and QP09 | TRH-10-16 |
| 4 | Inlet Bushing Assembly | | | for Series QP15 | TRH-10-12 |
| | for 1/4-18 NPT thread | TRD-A465 | | for Series QP20 | TRH-10-10 |
| | for 1/4-19 BSPT thread | TRD-A465-B | 27 | Gear Head Pinion | |
| 5 | Inlet Bushing Screen | TRH-61 | | for Series QP15 | TRH-17-18 |
| 6 | Inlet Bushing Bezel | TRD-123 | | for Series QP20 | TRH-17-21 |
| 7 | Inlet Bushing Retainer | TRD-57 | 28 | Planet Gear Head Spacer (for Series QP05, QP09, QP15, QP20 and QP38) | TRH-82 |
| 8 | Inlet Parts Kit | TRD-K303 | | | |
| 8A | Throttle Valve | --- | | 29 | Spindle Assembly (includes all spindle gearing) |
| 8B | Throttle Valve Spring | --- | for Series QP05 and QP30 | | TRD-A8-16 |
| 8C | Throttle Valve Seat | --- | for Series QP09, QP15 and QP51 | | TRD-A8-12 |
| 8D | Valve Seat Support | --- | for Series QP20 | | TRD-A8-10 |
| 8E | Valve Seat Retainer | --- | for Series QP38 | | TRD-A8-15 |
| 8F | Inlet Bushing Seal | --- | 30 | | Gear Case |
| 11 | Rear End Plate Assembly (includes rear rotor bearing) | TRD-A12 | | for Series QP30 and QP51 | TRD-37-5 |
| | | | | for all others | TRD-37 |
| 12 | Rear End Plate Assembly Retainer | 8SL-305 | 31 | Spindle Bearing | R00H-97 |
| 13 | Cylinder Assembly | TRD-A3 | 32 | Bearing Spacer | TRD-111 |
| 14 | Cylinder Alignment Pin (2) | TRH-98-1 | 33 | Bearing Stop (2) | TRH-28 |
| 15 | Rotor | TRD-53 | 34 | Spindle Cap Bearing | TRH-510 |
| 16 | Vane Packet (Set of 5 Vanes) | TRH-42-5 | 35 | Drill Chuck | |
| 17 | Front End Plate Assembly | TRH-A11 | | for Models ending in 1 or 1D (1/4") | R0H-99 |
| 18 | End Plate Alignment Pin | TRH-98-2 | | for Models ending in 2 or 2D (3/8") | 6A-99 |
| 19 | Front Rotor Bearing | TRH-24 | 36 | Chuck Key | |
| 20 | Motor Seal | TRH-211 | | for R0H-99 (1/4") Chuck | R1H-J253 |
| 21 | Motor Clamp Washer | TRH-207 | | for 6A-99 (3/8") Chuck | ROJ-J253 |
| 22 | Gear Retainer (for Series QP05, QP09, QP15, QP20 and QP38) | TRH-28 | * | Drill Chuck Guard Kit (optional) | |
| | | | | for Models ending in 1 or 1D (1/4") | TRD-A961-5 |
| | | | | for Models ending in 1 or 1D (3/8") | TRD-A961-5 |
| 23 | Gear Head Spacer (for Series QP05, QP09, QP15, QP20 and QP38) | TRH-81 | 37 | Inlet Retainer Removal Tool | TRD-322 |
| 24 | Planet Gear Head Drive Plate (for Series QP38) | TRH-17 | | * | Tune-Up Kit (Includes the following items; 3B, 5, 6, 8, 12, 16, 18, 19, 20, and 37) |

† Memory chip is optional. Can be added by using Inlet Bushing, part number AMS-4NPT (NPT) or AMS-4BSPT (BSP), equipped with TouchSync.
* Not illustrated.

Parts and Maintenance

When the life of the tool has expired, it is recommended that the tool be disassembled, degreased and parts be separated by material so that they can be recycled.

Tool repair and maintenance should only be carried out by an authorized Service Center.

Refer all communications to the nearest **Ingersoll Rand** Office or Distributor.

Related Documentation

For additional information refer to:

Air Drill Product Safety Information Manual 04580353.

Air Drill Product Information Manual 16572034.

Air Drill Maintenance Information Manual 16572679.

Manuals can be downloaded from ingersollrandproducts.com



ingersollrandproducts.com
© 2014 **Ingersoll Rand**

16572745
Edition 4
May 2014