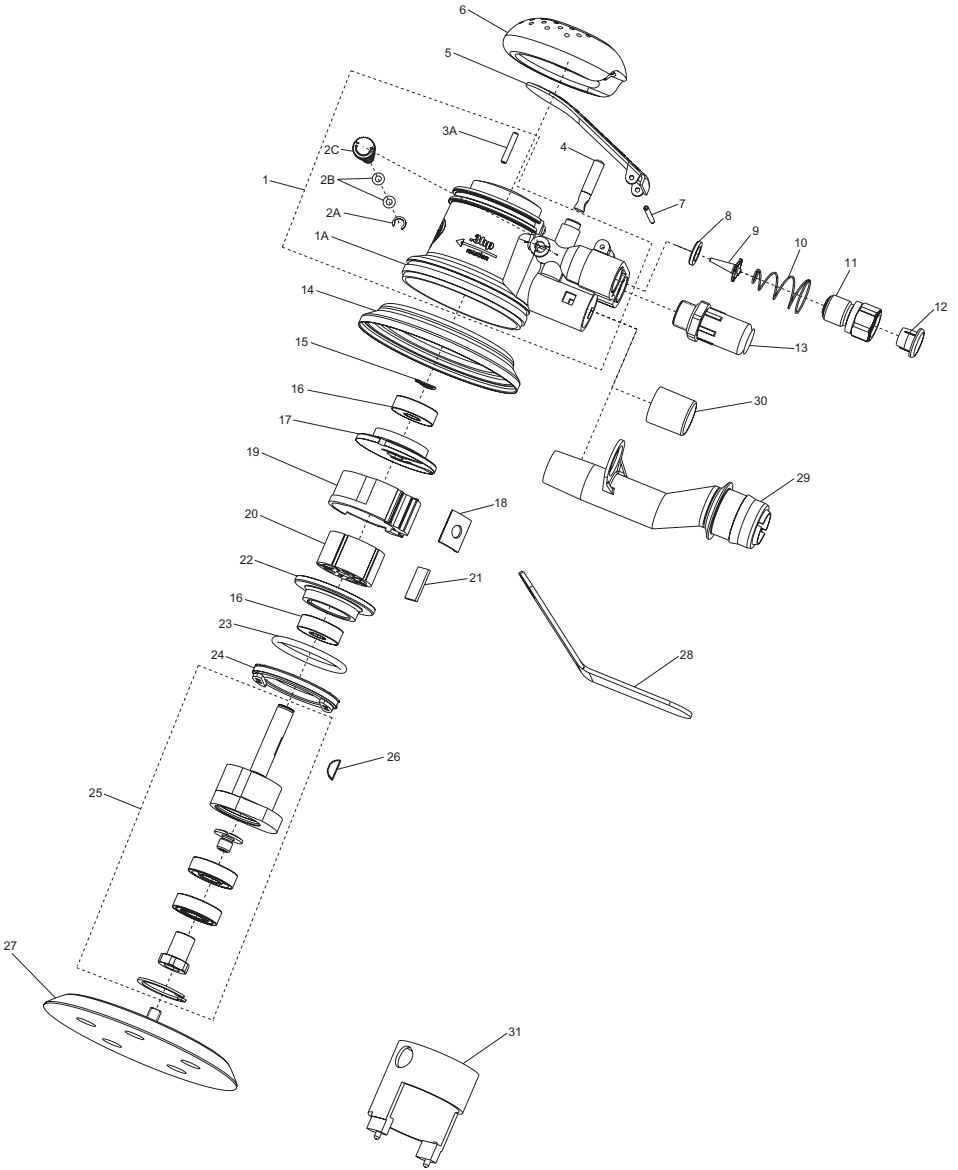


5151 and 5152 Series, RO Sander - Exploded View



## 5151 and 5152 Series, RO Sander - Parts List

Item	Part Description	Part Number	Item	Part Description	Part Number
1	Housing Assembly	5151-A40	20	Rotor	04648820
1A	Housing	--	21	Vane Pack (set of 5)	48254-42-5
*	Regulator Assembly	4151-A165	22	Front Endplate	04648929
2A	O-Ring	--	23	O-Ring	04649113
2B	Snap Ring	--	24	Ring Lock	04648853
2C	Regulator	--	25	Counterbalance Assembly	
3A	Pin	--		for 5151-6	ROS-A190
4	Valve Stem	04648770		for 5151-6-HL and 5151-HL-WP	80092810
5	Lever			for 5151-5 and 5151-5-HL	80090244
	for 5151-6, 5151-6-HL, 5151-HL-WP, 5151-5, and 5151-5-HL	5151-A93		for 5152-6	ROS-A190-2
	for 5152-6, 5152-6-HL, 5152-5 and 5152-5-HL	5152-A93		for 5152-6-HL	80090301
				for 5152-5 and 5152-5-HL	80092885
6	Grip Ring	4151-747B	26	Key	04648754
7	Spring Pin	04649117	27	Sanding Pad	
8	Valve Seat	04648804		for 5151-6 and 5152-6 (6" Vinyl Pad)	49879-1
9	Tip Valve	04648796		for 5151-6-HL and 5152-6-HL (6" H&L Pad)	VPAD-6HL
10	Spring	04648747		for 5151-5 and 5152-5 (5" Vinyl Pad)	49096-1
11	Inlet Adapter	04649083		for 5151-5-HL and 5152-5-HL (5" H&L Pad)	VPAD-5HL
12	Plastic Plug	22030159	28	Pad Wrench	04648739
13	Muffler Assembly	4151-A810	29	Vacuum Adapter (cuff size)	
14	Shroud Guard	04648887		25 mm (1") Vinyl Pad Tool	4151-A809A-25
15	Snap Ring Bowd	04648762		28 mm (1 - 1/8") H&L Pad Tool	4151-A809A-28
16	Bearing Ball (2 required)	04648812		32 mm (1 - 1/4") H&L Pad Tool	4151-A809A-32
17	Rear Endplate	04648945	30	Plug	04649059
18	Cylinder Seal	04648042	31	Wrench ASM	48869
19	Cylinder Assembly	47743738001			

\* Indicates not illustrated.

### Parts and Maintenance

When tool life has expired, it is recommended that the tool be disassembled, degreased and parts separated by material for proper recycling.

Tool repair and maintenance should only be carried out by an authorized Service Center.

Refer all communications to the nearest **Ingersoll Rand** office or distributor.

### Related Documentation

Manuals can be downloaded from [ingersollrand.com](http://ingersollrand.com)

For additional information, refer to:

Product Safety Information Manual 04580387.

Product Information Manual 47750788001.

Declaration of Conformity 47745831001.