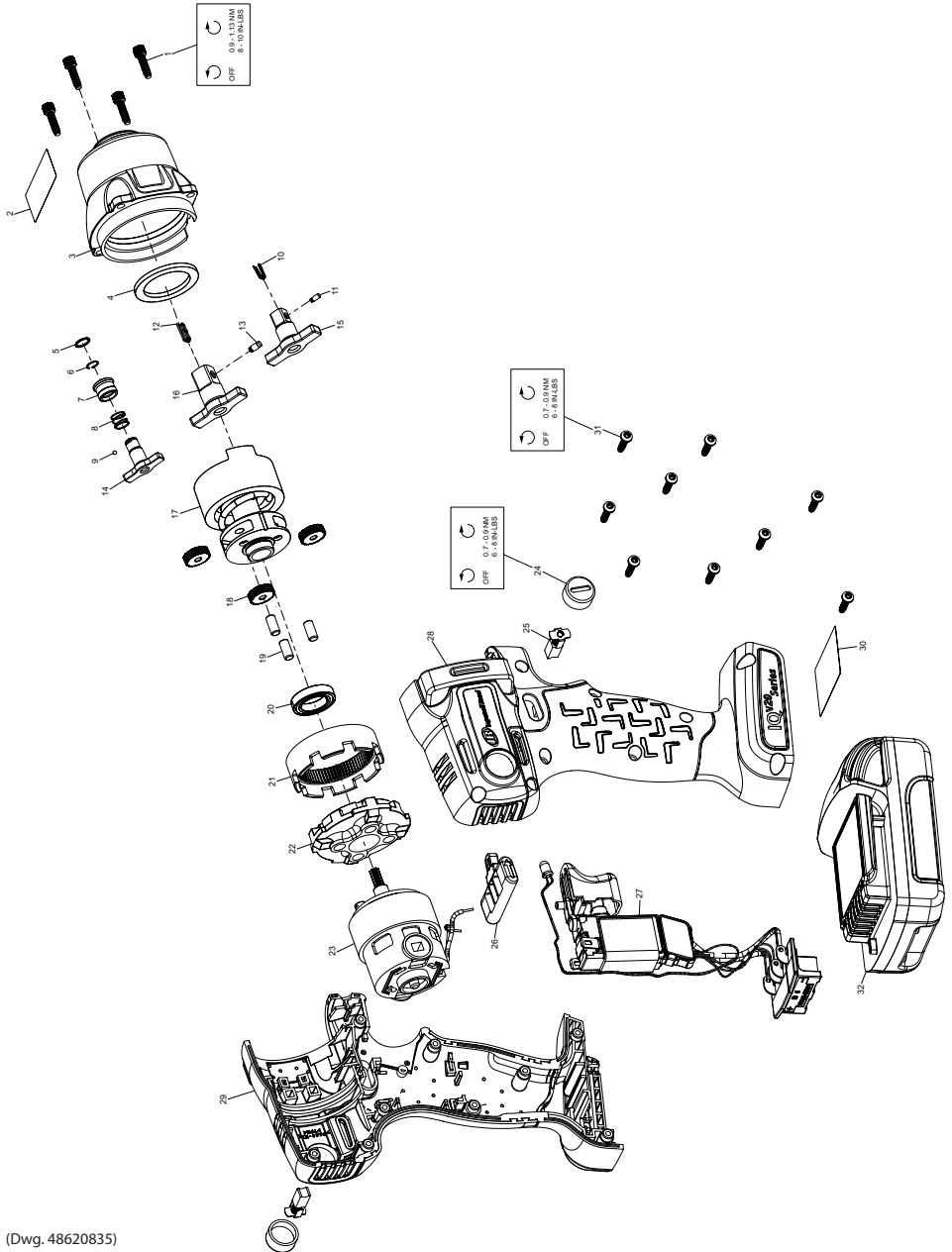


W5001 Series Cordless Impact Wrench - Exploded View



(Dwg. 48620835)

W5001 Series Cordless Impact Wrench - Parts List

Item	Part Description	Part Number	(CCN)	Item	Part Description	Part Number	(CCN)
*	Hammer Case Kit	--	--	23	Electric Motor Kit	W5111-K54	(48626063)
*	For W5111 and W5131P	W5111-K727	(48625776)	24	Cap Kit (2 Included)	W5111-54CK	(47514326001)
*	For W5151P	W5151P-K727	(48625818)	25	Brush Kit (2 Included)	W5111-54BK	(48623813)
1	Screw, Hammer Case (4 Required)	--	--	26	Forward/Reverse Actuator	W7150-K75	(48391312)
2	Warning Label	--	--	27	Trigger & Battery Connector Kit	W5130-K93	(48624829)
3	Hammer Case Assembly	--	--	*	Housing Kit	W5111-K40	(48626071)
4	Nylon Washer	--	--	28	Right Housing	--	--
*	Bit Retainer Kit For W5111, 1/4-in QC Hex	W5111-K425	(47514327001)	29	Left Housing	--	--
5	Washer	--	--	30	Information Label	--	--
6	Snap Ring	--	--	31	Screw, Housing (9 Required)	--	--
7	Bit Sleeve	--	--	*	Fastener Kit	W5130-K105	(48624845)
8	Spring	--	--	1	Screw, Hammer Case (4 Required)	--	--
9	Ball	--	--	31	Screw, Housing (9 Required)	--	--
*	Socket Retainer Kit For W5131P	2115PTI-K425	(80107709)	*	Label Kit	W5111-K99	(48626089)
10	Spring	--	--	2	Warning Label	--	--
11	Socket Retainer	--	--	30	Information Label	--	--
*	Socket Retainer Kit For W5151P	2125PTI-K425	(80107725)	*	Protective Tool Boot	W5111-BOOT	(47499747001)
12	Spring	--	--	*	Grease	--	--
13	Socket Retainer	--	--		IR #105 (1 lb can) for Impact Mechanism and Anvil	105 1 LB	(04279147)
*	Anvil Kit For W5111, 1/4-in QC Hex	W5111-K626	(48626030)		IR #105 (8 lb can) for Impact Mechanism and Anvil	105 8 LB	(04264875)
14	Anvil	--	--		IR #67 (1 lb can) for Gearing	67 1 LB	(03773009)
*	Bit Retainer Kit	--	--		IR #67 (8 lb can) for Gearing	67 8 LB	(03820008)
*	Anvil Kit For W5131P	W5131P-K626	(48626048)		Grease Gun	R000A2-228	(03095015)
15	Anvil	--	--	32	20V Li-Ion Battery Pack	--	--
10	Spring	--	--		1.5 Ah	BL2005	(48386783)
11	Socket Retainer	--	--		2.5Ah	BL2012	(47515903001)
*	Anvil Kit For W5151P	W5151P-K626	(48626055)		3.0 Ah	BL2010	(48386791)
16	Anvil	--	--		5.0Ah	BL2022	(47515902001)
12	O-Ring	--	--	*	Protective Battery Boot	--	--
13	Socket Retainer	--	--		For BL2005, BL2012	BL2005-BOOT	(47510965001)
17	Impact Mechanism Kit	W5111-K724	(47498764001)		For BL2010, BL2022	BL2010-BOOT	(47510964001)
*	Planetary Gear Kit	W5111-K37	(47498318001)	*	Battery Charger	BC1121	(47507879001)
18	Planet Gear (3 Required)	--	--	*	Carrying Case	W5000-CASE	(48622104)
19	Pin (3 Required)	--	--	*	Carrying Case Latch	W7000-LATCH	(47507275001)
20	Bearing, Gear Carrier	--	--				
21	Ring Gear	--	--				
22	Ring Gear Holder	--	--				

* Not Illustrated

Parts and Maintenance

When tool life has expired, it is recommended that the tool be disassembled, degreased and parts separated by material for proper recycling.

Tool repair and maintenance should only be carried out by an authorized Service Center.

Refer all communications to the nearest **Ingersoll Rand** office or distributor.

Related Documentation

Manuals can be downloaded from ingersollrandproducts.com

For additional information refer to:

Cordless Impact Wrench Product Safety Information Manual 04581146.

Cordless Impact Wrench Product Information Manual 48383970.

