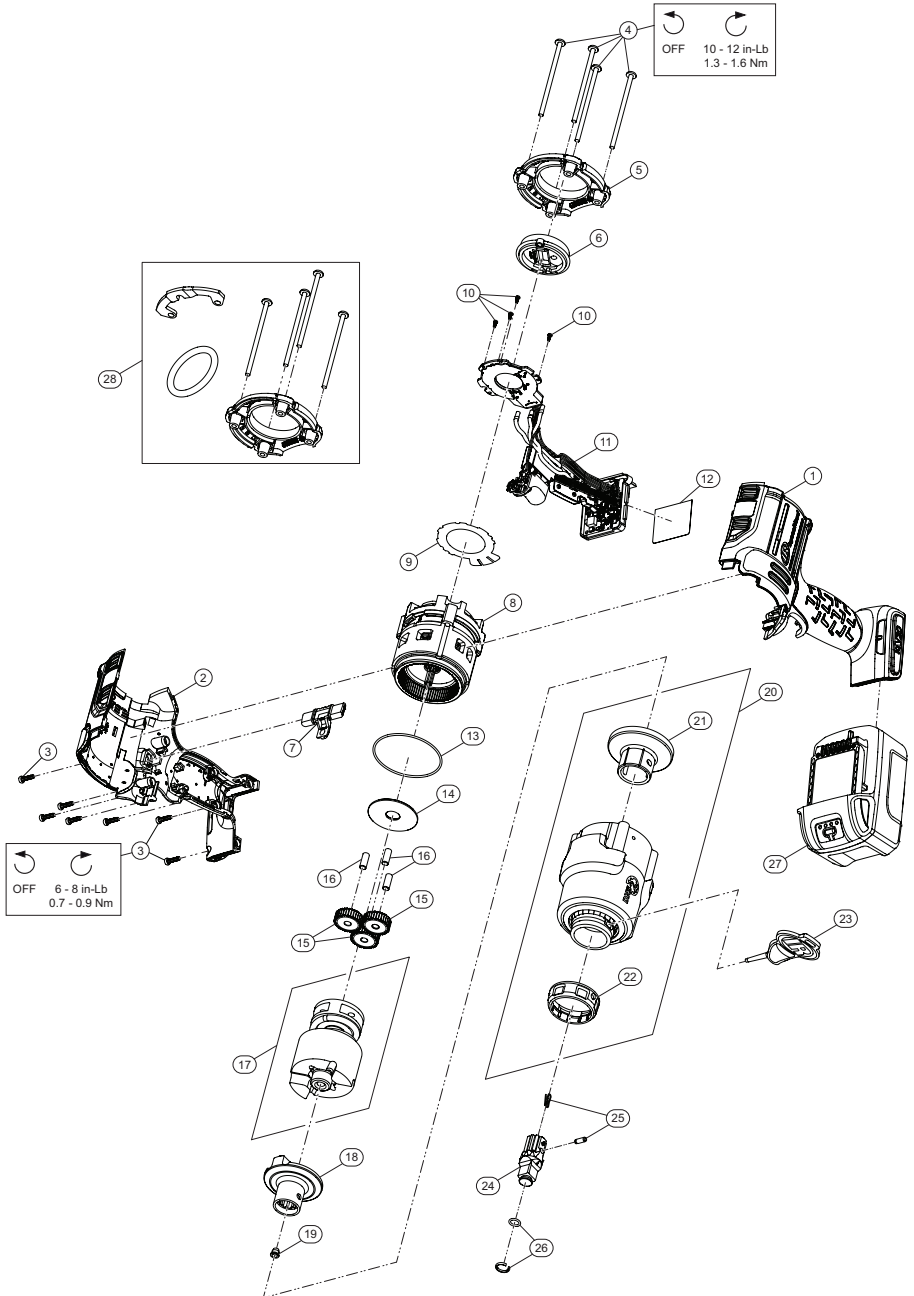


**W7153 DXS Series, Cordless Impact Wrench - Exploded View**



(Dwg. TL-W7153-PLM-1)

## W7153 DXS Series, Cordless Impact Wrench - Parts List

Item	Part Description	Part Number (CCN)	Item	Part Description	Part Number (CCN)
*	Housing Kit	W7152-K40 (47631612001)	23	Tool, Attachment Release - 10 Pack	TK-DXS-TOOL-10
1	Housing, Left	---	24	Anvil Assembly (replaceable)	A41H
2	Housing, Right	---	25	Anvil Retainer Kit (all Splined Anvils)	TK-2236-716
3	Screw, Housing (7 required)	---			
*	Fastener Kit	W7152-K105 (47631614001)	26	Socket Retainer Kit (1/2" Ring-type)	2125QTI-K425
3	Screw, Housing (7 required)	---			
4	Screw, Hammer Case (4 required)	---	27	Battery, BL2022	BL2022 (47515902001)
10	Screw, Hall PCBA (4 required)	---	28	Hanger Kit	W7152-K365B (47632290001)
5	Backcap Kit	W7152-K40B (47631613001)		Backcap	---
6	Regulator Kit	W7152-K249 (47631608001)	*	Screw, Hammer Case (2 required)	---
7	Directional Switch Kit	W7152-K75 (47631610001)		Screw, Long Hammer Case [upper] (2 required)	---
8	Brushless Motor Kit	W7152-K54 (47631607001)		Hanger Bracket	---
9	Insulator Sheet Kit	W7152-K624 (47633589001)		Hanger Ring	---
10	Screw, Hall PCBA (4 required)	---	*	Battery Charger	BC1121 (47507879001)
*	Drive Kit	W7152-K93 (47631611001)	*	Protective Tool Boot - Open Regulator Control	W7152-BOOT (47621732001)
11	Drive Assembly	---	*	Protective Tool Boot - Covered Regulator Control	W7152-BOOTX (47621734001)
12	Information Label	W7152-300 (47542207001)	*	Protective Battery Boot	BL2010-BOOT (47510964001)
13	Seal, Ring Gear	W7152-65 (47596612001)	26	Socket Retainer Kit (1/2" Ring-type) - 10 Pack	2125QTI-K425-10
*	Gear Kit	W7152-K37 (47631606001)		Grease	---
14	Cam Thrust Washer	---	*	Grease, IR # 105 (4 oz. tube)	105-4T
15	Planet Gear (3 required)	---		Grease, IR # 105 (1 lb can)	105-1LB
16	Gear Pin (3 required)	---	*	Grease, IR # 105 (8 lb can)	105-8LB
17	Impact Mechanism Kit	TA-W7153-IMK		Grease Gun	R000A2-228
*	Camshaft	---			
	Hammer	---			
	Spring	---			
	Ball, Hammer (36 required)	---			
	Ball, Camshaft (2 required)	---			
	Thrust Washer	---			
*	Anvil Assembly (internal)	TA-W7153-5265D			
18	Anvil, Internal	---			
19	Grease Fitting	131-188			
20	Hammer Case Assembly	TA-W7153-727			
21	Bushing, Hammer Case	TP-W7153-6415D			
*	Hammer Case	---			
	Hammer Case Sleeve	---			
	COB Light Assembly	---			
	Lens Assembly	---			
22	Retaining Pin Guard	TP-W7153-961			

\* Indicates not illustrated.

## Parts and Maintenance

When tool life has expired, it is recommended that the tool be disassembled, degreased and parts separated by material for proper recycling.

Tool repair and maintenance should only be carried out by an Authorized Service Center.

Refer all communications to the nearest **Ingersoll Rand** office or distributor.

## Related Documentation

Manuals can be downloaded from [ingersollrand.com](https://www.ingersollrand.com)

For additional information, refer to:

Product Safety Information Manual 04581146

Product Information Manual TL-W7153-PIM

CE-Declaration of Conformity TL-W7153-DOC

UK-Declaration of Conformity TL-W7153-DOC-UK

