



16574782
Edition 2
October 2007

Air Pulse Tools

Models 100P4, 130P4 and 140P6

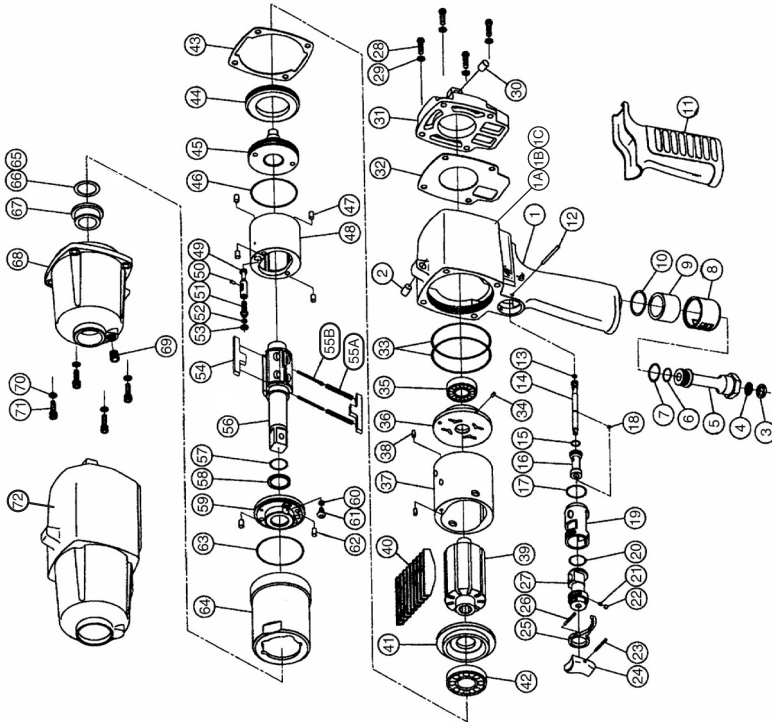
Parts Information



Save These Instructions

 **Ingersoll Rand**

100P4 and 130P4 Impulse Wrench Exploded Diagram



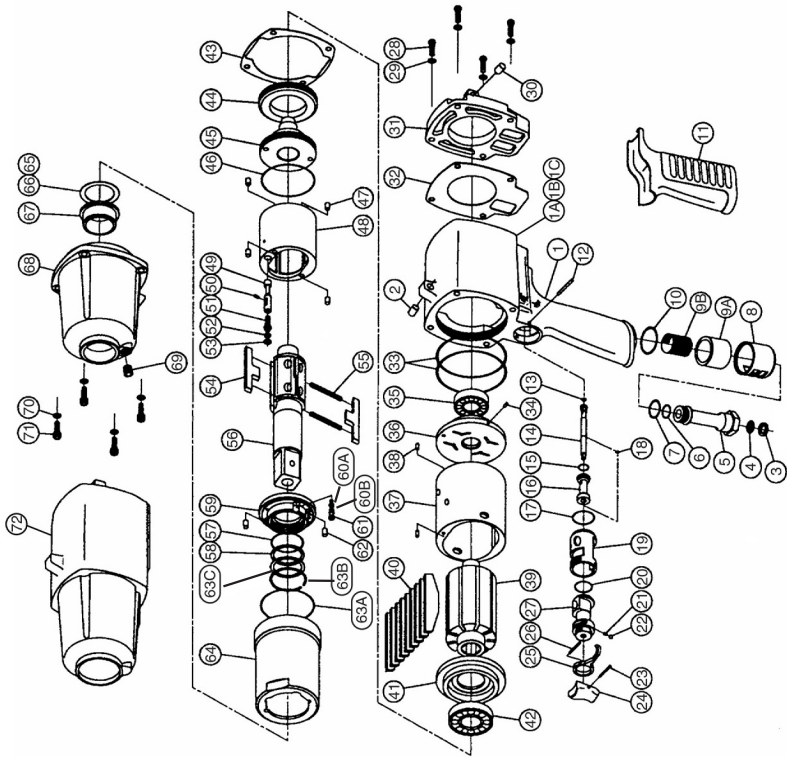
(Dwg. TP2207)

100P4 and 130P4 Impulse Wrench Parts List

Item	Part Description	100P4 Part Number	130P4 Part Number	Item	Part Description	100P4 Part Number	130P4 Part Number
1	Motor Housing Assembly	100P4-A40	130P4-A40	40	Vane (9)	100P4-42	130P4-42
1A	Name Plate	100P4-301	130P4-301		Liner Lower Plate Assembly	100P4-A211	130P4-A211
1B	Warning Label	WARNING-27-99	WARNING-27-99	41	Lower Plate	100P4-11	130P4-11
1C	Manufacturing Label	70PS3-99	70PS3-99	42	Ball Bearing	100P4-97	130P4-97
2	Spring Pin	70P3-232	70P3-232	43	Mechanism Cover Gasket	100P4-740	130P4-740
3	Washer	70PS3-442	70PS3-442		Liner Case Assembly		
4	Strainer	70PS3-565	70PS3-565	44	Liner Cap	100P4-207	130P4-207
5	Hose Joint	100P4-979	130P4-979	45	Liner Upper Plate	100P4-214	130P4-214
6	O-Ring	EQ106S-167	EQ106S-167	46	O-Ring	EQ106S-36	EQ106S-36
7	O-Ring	55P3-303	55P3-303		Liner Assembly	100P4-A203	130P4-A203
8	Exhaust Cover	100P4-978	130P4-978	47	Pin (4)	EQ230P-298	130P4-298
9	Exhaust Element	100P4-506	130P4-506	48	Liner	100P4-203	130P4-203
10	O-Ring	45P3-273	130P4-273	49	Relief Valve	100P4-222	130P4-222
11	Rubber Grip	100P4-2	100P4-2	50	Pin	500A-299	500A-299
12	FF Pin	100P4-297	130P4-297	51	Adjust Bolt	100P4-230	100P4-230
	Throttle Rod Assembly	100P4-A302	130P4-A302	52	O-Ring	EQ106S-228	EQ106S-228
13	O-Ring	100P4-228	100P4-228	53	Back-up Ring	100P4-224	130P4-224
14	Throttle Rod	100P4-302	130P4-302	54	Blade (2)	100P4-220	130P4-220
	Throttle Rod Bushing Assembly	100P4-A303	130P4-A303	55A	Spring (2)	Y802013140000	None
15	O-Ring	100P4-119	130P4-267	55B	Spring (2)	Y802013130000	1410P-219
16	Throttle Rod Bushing	100P4-303	130P4-303	56	Main Shaft Assembly	100P4-A626	130P4-A626
17	O-Ring	100PQ-236	130P4-236	56a	Pin	90PS4-98	90PS4-98
18	Snap Ring	EQ106P-303	EQ106P-303	56b	Spring	90PS4-718	90PS4-718
19	Throttle Bushing	100P4-503	130P4-503	56c	Blind Cap	90PS4-202	90PS4-202
20	O-Ring	EQ106P-283	55P3-303	57	O-Ring	100P4-272	100P4-272
21	Spring Pin	100PQ-568	100PQ-568	58	Back-up Ring	90P4-224	90P4-224
22	Ball	EQ104S-929	EQ104S-929	59	Liner Lower Plate Assembly	100P4-211	130P4-211
23	Spring Pin	EQ106P-265	EQ106P-265	60	O-Ring	EQ106S-228	EQ106S-228
24	Throttle Knob	100P4-943	100P4-943	61	Oil Plug	EQ106S-277	EQ106S-277
25	Reverse Lever	100P4-328	100P4-328	62	Spring Pin (2)	100P4-120	130P4-120
26	Spring Pin	180SQ-152	180SQ-152	63	O-Ring	EQ106S-36	1410P-228
27	Reverse Valve	100P4-329	130P4-329	64	Liner Case	100P4-31	130P4-31
28	Hex Bolt (4)	100P4-638	100P4-638	65*	Washer	90PS4-79	90PS4-79
29	Spring Washer (4)	900P-58	900P-58	66*	Washer	90PS4-80	90PS4-80
	Motor Case Cover Assembly	100P4-A202	130P4-A202		Hammer Case Assembly	100P4-A727	130P4-A727
30	Spring Pin	70P3-232	70P3-232	67	Main Shaft Bushing	90P4-641	90P4-641
31	Motor Case Cover	100P4-202	130P4-202	68	Hammer Case Assembly	100P4-727	130P4-727
32	Motor Housing Gasket	100P4-739	130P4-739	69	Socket Plug	180PQ-95	180PQ-95
33	O-Ring	100P4-238	130P4-238	70	Spring Washer (4)	900P-58	900P-58
	Motor Assembly	100P4-936	130P4-936	71	Hex Bolt (4)	1100P-638	1100P-638
	Upper Plate Assembly	100P4-A212	130P4-A212	72	Protector	100P4-P32	130P4-P32
34	Pin	100PQ-298	380SQ-298		Hex Wrench (HS), not shown	70P3-900	70P3-900
35	Ball Bearing	100P4-606	130P4-24		Hex Wrench, not shown.	04355012	04355012
36	Upper Plate	100P4-212	130P4-212		Motor Tune-Up Kit (includes parts 32, 33, 35, 40, 42)	100P4-TK1	130P4-TK1
37	Cylinder Assembly	100P4-A3	130P4-A3		Mechanism Tune-Up Kit (includes parts 43, 46, 52, 53, 55A, 55B, 57, 58, 60, 63)	100P4-TKMS1	130P4-TKMS1
38	Pin (2)	380SQ-298	380SQ-298		Tool Kits	See Table 1	See Table 1
39	Rotor	100P4-53	130P4-53				

* Use one

140P6 Impulse Wrench Exploded Diagram



(Dwg. TP2208)

140P6 Impulse Wrench Parts List

Item	Part Description	Part Number	Item	Part Description	Part Number
1	Motor Housing Assembly	140P6-A40	40	Vane (9)	140P6-42
1A	Name Plate	140P6-301		Lower Plate Assembly	140P6-A11
1B	Warning Label	WARNING-27-99	41	Lower Plate	140P6-11
1C	Supplier Label	70PS3-99	42	Ball Bearing	140P6-97
2	Spring Pin	70P3-232	43	Mechanism Cover Gasket	130P4-740
3	Washer	70PS3-442		Liner Case Assembly	
4	Strainer	70PS3-565	44	Liner Cap	140P6-207
5	Hose Joint	130P4-979	45	Liner Upper Plate	140P6-214
6	O-Ring	EQ106S-167	46	O-Ring	EQ212P-236
7	O-Ring	55P3-303		Liner Assembly	140P6-A203
8	Exhaust Cover	130P4-978	47	Pin (4)	130P4-298
9A	Exhaust Element (A)	140P6-505	48	Liner	140P6-203
9B	Exhaust Element (B)	140P6-506	49	Relief Valve	140P6-222
10	O-Ring	140P6-236	50	Pin	500A-299
11	Rubber Grip	100P4-2	51	Adjust Bolt	100P4-230
12	FF Pin	130P4-297	52	O-Ring	EQ106S-228
	Throttle Rod Assembly	130P4-A302	53	Back-up Ring	130P4-224
	O-Ring	100P4-228	54	Blade	140P6-220
14	Throttle Rod	130P4-302	55	Spring (2)	1900P-219
	Throttle Rod Bushing Assembly	130P4-A303	56	Main Shaft Assembly	140P6-A626
	O-Ring	130P4-267	57	O-Ring	140P6-36
16	Throttle Rod Bushing	130P4-303	58	Back-up Ring	EQ230P-272
17	O-Ring	130P4-236	59	Liner Lower Plate Assembly	140P6-A211
18	Snap Ring	EQ106P-303	60A	O-Ring	EQ110P-288
19	Throttle Bushing	130P4-503	60B	Back-up Ring	140P6-224
20	O-Ring	55P3-303	61	Oil Plug	140P6-277
21	Spring Pin	100PQ-568	62	Pin (2)	140P6-120
22	Ball	EQ104S-929	63A	O-Ring	90P4-236
23	Spring Pin	EQ106P-265	63B	Retaining Ring	140P6-271
24	Throttle Knob	100P4-943	63C	Washer	140P6-229
25	Reverse Lever	100P4-328	64	Liner Case	140P6-31
26	Spring Pin	180SQ-152	65*	Washer	140P6-228
27	Reverse Valve	130P4-329	66*	Washer	140P6-933
28	Hex Bolt (4)	100P4-638		Hammer Case Assembly	140P6-A727
29	Spring Washer (4)	900P-58	67	Main Shaft Bushing	3000P-641
	Motor Case Cover Assembly	140P6-A202	68	Hammer Case	140P6-727
30	Spring Pin	70P3-232	69	Socket Plug	180PQ-95
31	Motor Case Cover	140P6-202	70	Spring Washer (4)	900P-58
32	Motor Housing Gasket	140P6-739	71	Bolt with Hex Hole (4)	1100P-638
33	O-Ring (2)	3000P-238	72	Protector	140P6-P32
	Motor Assembly	140P6-936		Hex Wrench (HS), not shown	70P3-900
	Upper Plate Assembly	140P6-A212		Hex Wrench, not shown	04355012
34	Pin	380SQ-298		Motor Tune-Up Kit (includes parts 32, 33, 35, 40, 42, 43)	140P6-TK1
35	Ball Bearing	140P6-606		Mechanism Tune-Up Kit (includes parts 43, 46, 52, 53, 55, 57, 58, 60A, 60B, 63A)	140P6-TKMS1
36	Upper Plate	140P6-212		Tool Kits	See Table 1
37	Cylinder Assembly	140P6-A3			
38	Pin (2)	380SQ-298			
39	Rotor	140P6-53			

* Use one

Table 1- Impulse Tool Rebuild Tools

Tool Name	Part Number	Tool Kit Number	Model Used On
Housing Cap Spanner Plug	100P4-A-HCT	100P4-99 and 130P4-99	100P4 and 130P4
Housing Cap Spanner Plug	140P6-A-HCT	140P6-99	140P6
Disassembly Arbor	100P4-B-HA	100P4-99 and 130P4-99	100P4 and 130P4
Disassembly Arbor	140P6-B-HA	140P6-99	140P6
Pressing Sleeve	100P4-C-HA	100P4-99	100P4
Pressing Sleeve	130P4-C-HA	130P4-99	130P4
Pressing Sleeve	140P6-C-HA	140P6-99	140P6
End Plate Jig	100P4-H-HA	100P4-99	100P4
End Plate Jig	130P4-H-HA	130P4-99	130P4
End Plate Jig	140P6-H-HA	140P6-99	140P6

Parts and Maintenance

When the life of the tool has expired, it is recommended that the tool be disassembled, degreased and parts be separated by material so that they can be recycled.

Tool repair and maintenance should only be carried out by an authorized Service Center.
Refer all communications to the nearest **Ingersoll Rand** Office or Distributor.

Related Documentation

For additional information refer to:

Product Safety Information Manual 04584983.
Product Information Manual 80167547.
Maintenance Information Manual 16575425.

Manuals can be downloaded from www.irttools.com.

Notes:

www.irtools.com

© 2007 Ingersoll Rand Company

