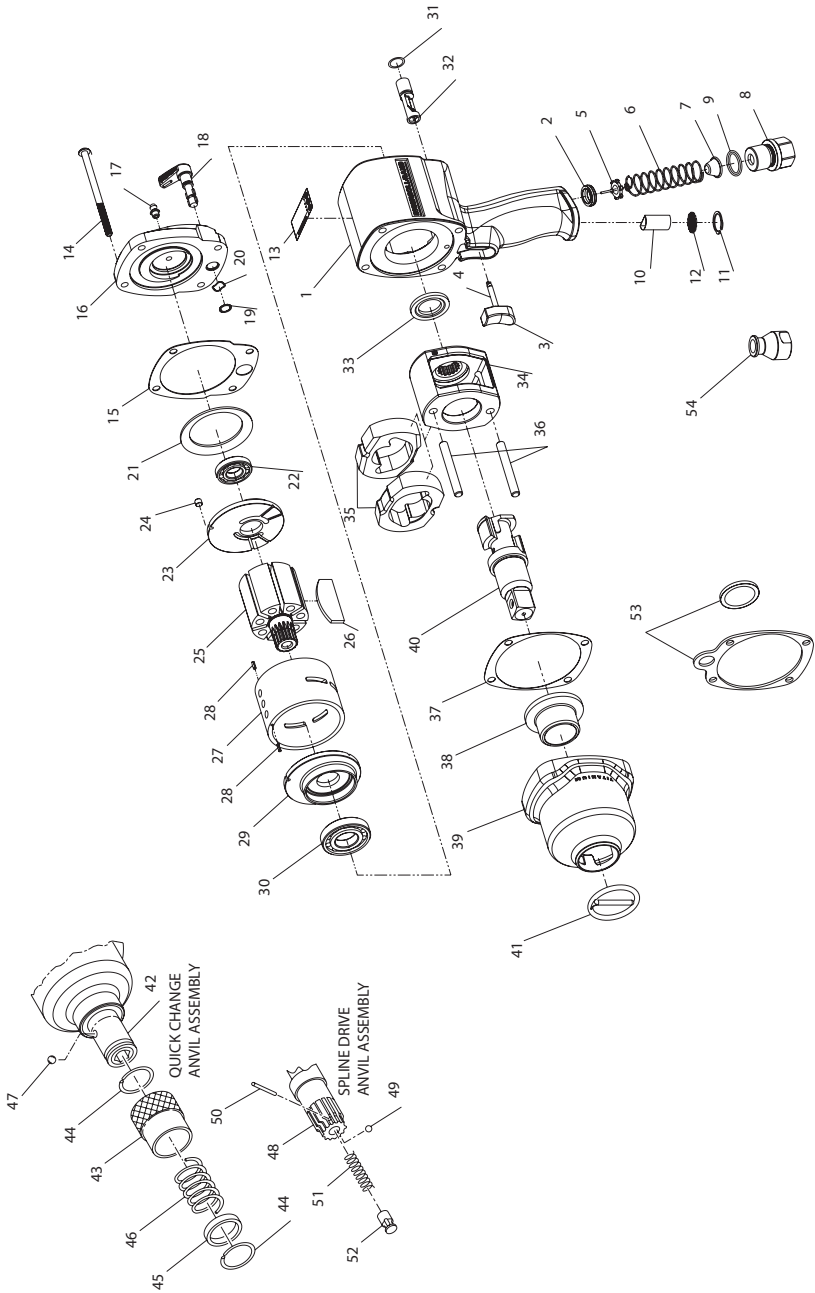


2925Ti Series Air Impact Wrench - Exploded View



(Dwg. TPA1580-2)



2925Ti Series Air Impact Wrench - Parts List

Item	Part Description	Part Number	Item	Part Description	Part Number	
*	Motor Housing Assembly	2925-A40	29	Front End Plate	2925-11	
1	Motor Housing	2925-B40	30	Front Rotor Bearing	834-24	
2	Throttle Valve Seat	DG230-303	† 31	Reverse Valve O-Ring	23446	
*	Trigger Assembly	2161-A93R	32	Reverse Valve	2161-329	
3	Trigger	2161-93R	33	Hammer Frame Washer	2161-706	
4	Trigger Pin	2161-94	34	Hammer Frame	2925-703	
5	Throttle Valve	2921-302	35	Hammer (2)	2925-724	
6	Throttle Valve Spring	2161-51	36	Hammer Pin (2)	2910-704	
7	Air Strainer Screen	834-61	† 37	Hammer Case Gasket	2161-36	
*	Inlet Bushing Assembly	2161-A465A	*	Hammer Case Assembly	2190TI-D727	
8	Inlet Bushing	2161-465A	38	Hammer Case Bushing	2161-641	
9	Seal	R4-210	39	Hammer Case	2190TI-727	
10	Muffler Element	202-311	40	Anvil		
11	Retaining Ring	2161-118		3/4" square drive	2910-726	
12	Exhaust Deflector	2161-23		1" square drive	2910-826	
13	Warning Label	WARNING-2-99	41	Socket Retainer		
14	Backcap Bolt (4)	2925-638		for 3/4" square drive	RR100345	
† 15	Backcap Gasket	2161-739		for 1" square drive	RR100155	
*	Backcap Assembly	2925-A102	*	Quick Change Anvil Assembly	2910B-A926-10	
16	Backcap	2925-102	42	Quick Change Anvil	2910B-926-10	
17	Grease Fitting	R1-188	43	Retaining Sleeve	W54-930-10	
18	Reverse Lever	2925-658	44	Thrust Ring Lock (2)	W54-933-10	
19	Reverse Lever Snap Ring	2161-28	45	Thrust Ring	W54-932-10	
20	Reverse Lever Spring	2161-278	46	Retaining Sleeve Spring	W54-931-10	
21	Motor Clamp Washer	2161-207	47	Retaining Ball	8U-722	
22	Rear Rotor Bearing	4E-510	*	No. 4 Spline Drive Anvil	2910-A526	
23	Rear End Plate	2925-12	48	Anvil	2910-526	
24	Locating Pin	2920-74	49	Socket Retaining Ball	G601-65	
25	Rotor	2925-53	50	Retaining Ball Plunger	910-230	
† 26	Vane Packet (set of 7 vanes)	2925-42-7	51	Ball Plunger Spring	12SR-262	
*	Cylinder Assembly	for 2925P1Ti & 2925P3Ti	2925-A3	52	Plunger Retaining Pin	7L-120
		for 2925RBP1Ti & 2925RBP3Ti	2925RB-A3	53	Hanger Kit	2161-366
				54	Piped-Away Exhaust (accepts 1/2"-14 NPT male-fitting)	2161-123
27	Cylinder	for 2925P1Ti & 2925P3Ti	2925-3	*	Grease	
		for 2925RBP1Ti & 2925RBP3Ti	2925RB-3		1 lb.	170-1LB
					8 lb.	170-8LB
28	Cylinder Dowel (2)	for 2925P1Ti & 2925P3Ti	JC3350-538			
		for 2925RBP1Ti & 2925RBP3Ti	JC3350-538			

* Not illustrated.

† To keep downtime to a minimum, it is desirable to have on hand certain repair parts. We recommend that you stock one (pair or set) of each part indicated by a bullet (†) for every four tools in service.

Parts and Maintenance

When the life of the tool has expired, it is recommended that the tool be disassembled, degreased and parts be separated by material so that they can be recycled.

Tool repair and maintenance should only be carried out by an authorized Service Center.

Refer all communications to the nearest **Ingersoll Rand** Office or Distributor.

Related Documentation

For additional information refer to:

Air Impact Wrenches Product Safety Information Manual Form 04580916.

Air Impact Wrenches Product Information Manual Form 16573206.

Air Impact Wrench Maintenance Information Manual Form 04584348.

Manuals can be downloaded from ingersollrandproducts.com



ingersollrandproducts.com
© 2013 Ingersoll Rand

04584561
Edition 2
October 2013