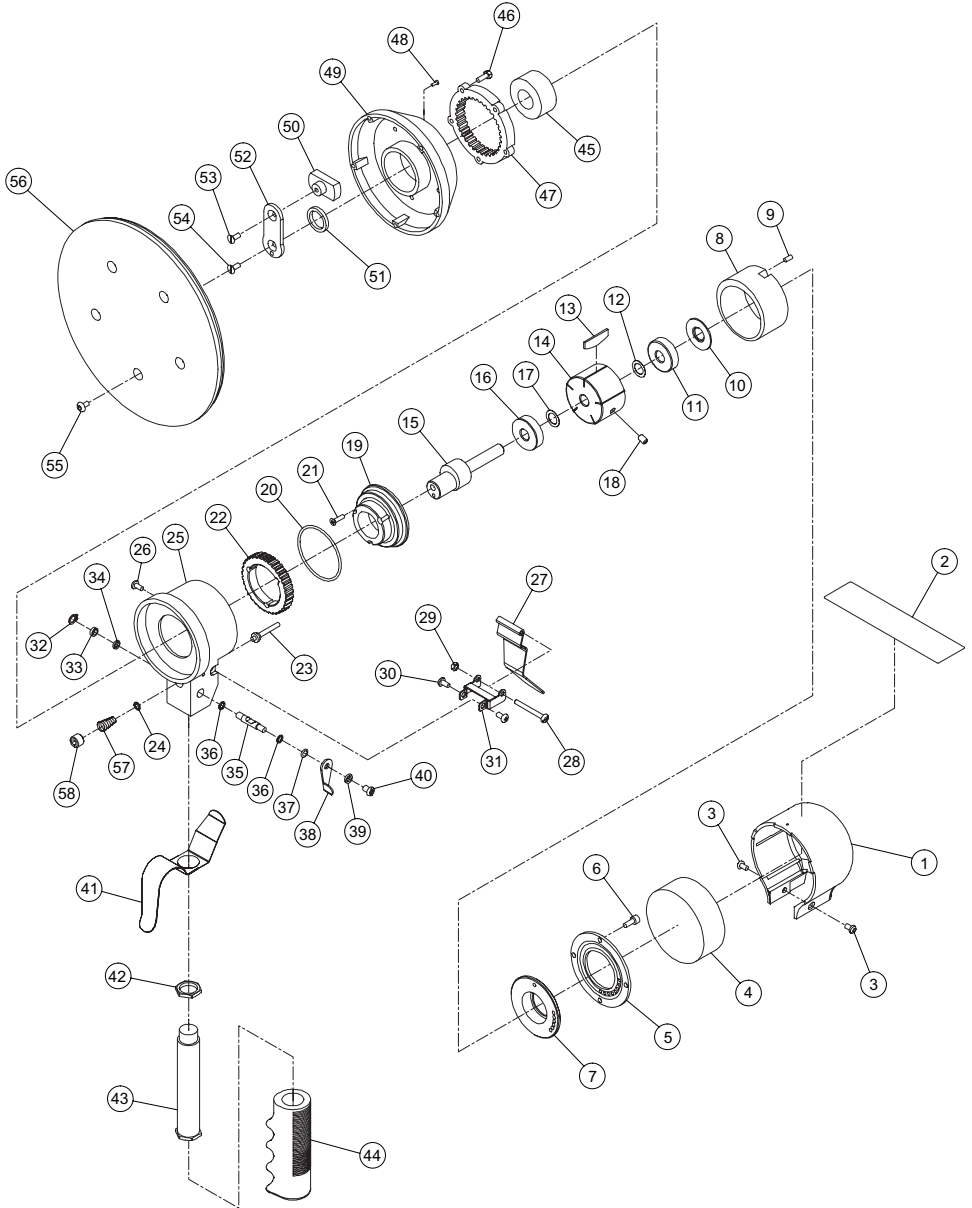


# 328B Air Orbital Sander - Exploded View



(Dwg. TPA1772)

---

## 328B Air Orbital Sander - Parts List

Item	Part Description	Part Number	Item	Part Description	Part Number
1	Housing Cover Assembly	328B-A109	30	Screw (2)	311-170
2	Nameplate	328B-301	31	Bracket	311-274
3	Screw (2)	311-78	32	Retainer Ring	311-168
4	Muffler	311-311	33	Washer	311-166
5	Motor Plate	311-310	34	Flat Washer	311-167
6	Motor Screw (4)	311-103	35	Regulator	311-A165
7	Front End Plate	328B-11	36	O-Ring (2)	311-169
8	Cylinder Assembly	311-A3	37	O-Ring	311-65
9	Pin	311-98	38	Regulator Nut	311-270
10	Washer	311-25	39	Washer	311-277
11	Bearing	311-24	40	Bolt	311-279
12	Shim	311-448	41	Second Lever	311-271
13	Vane Packet (Set of 5 Vanes)	311-42-5	42	Nut	311-155
14	Rotor	311-53	43	Handle	311-A465
15	Rotor Shaft	328B-54	44	Grip	311-160
16	Bearing	311-24	45	Bearing	328B-97
17	Shim	311-448	46	Screw (5)	328B-101
18	Set Screw	311-55	47	Internal Gear	328B-406
19	Rear End Plate	328B-A12	48	Screw (3)	311-279
20	O-Ring	328B-68	49	Gear Cover	328B-236
21	Screw (3)	328B-104	50	Balance Nut	328B-836
22	Gear	328B-82	51	Balance Washer	328B-18
23	Valve Stem	311-A161	52	Balance Shaft	328B-316
24	O-Ring	311-169	53	Screw	328B-841
25	Housing Assembly	328B-A40	54	Screw	328B-840
26	Set Screw	328B-55	55	Screw (5)	328B-17
27	Lever	311-273	56	Pad (8")	328B-825-8
28	Screw	311-275	57	Spring	311-51
29	Nut	311-278	58	Screw	311-266

---

### Parts and Maintenance

When tool life has expired, it is recommended that the tool be disassembled, degreased and parts separated by material for proper recycling.

Tool repair and maintenance should only be carried out by an authorized Service Center.

Refer all communications to the nearest **Ingersoll Rand** office or distributor.

---

### Related Documentation

Manuals can be downloaded from [ingersollrandproducts.com](http://ingersollrandproducts.com)

For additional information, refer to:

Product Safety Information Manual 04580387.

Product Information Manual 04577128.