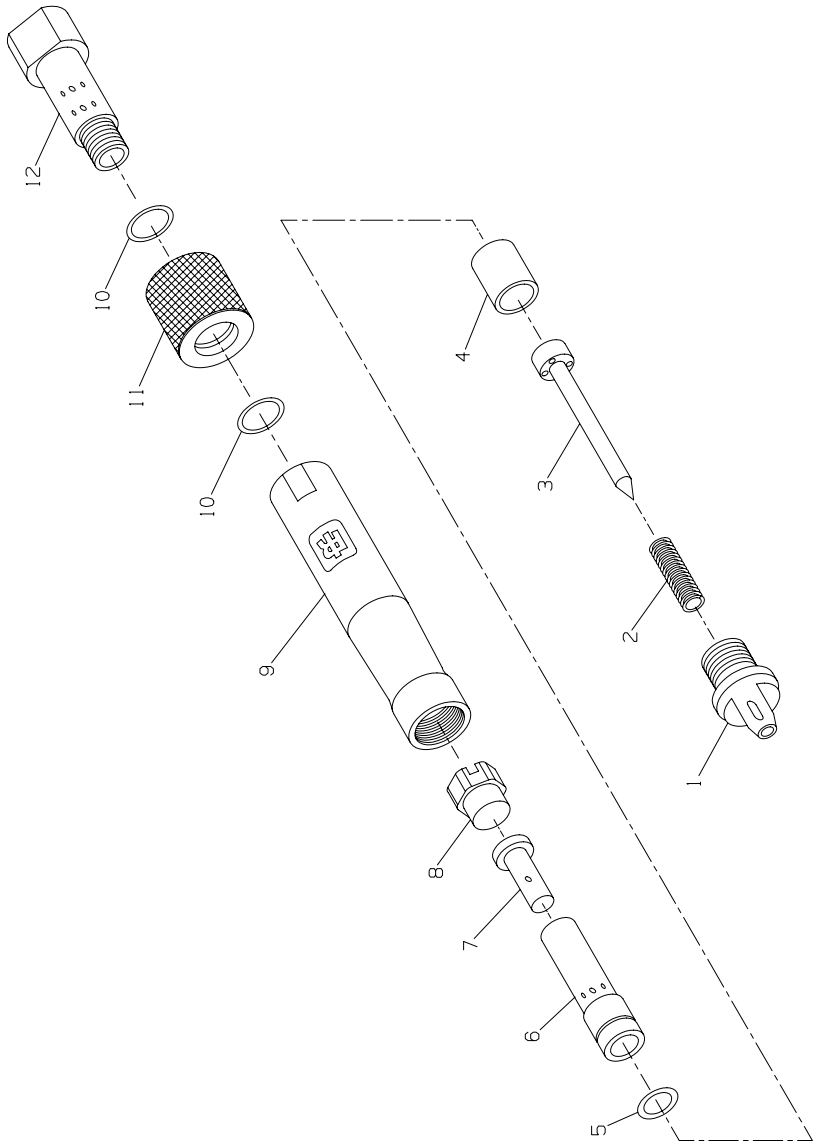


EP50 Air Engraving Pen - Exploded View



(Dwg. TPB746)

EP50 Air Engraving Pen - Parts List

Item	Part Description	Part Number	Item	Part Description	Part Number
1	Nosepiece	EP50-502	12	Inlet	EP50-503
† 2	Stylus Spring	EP50-505	*	Warning Label (for models	
3	Stylus (standard)	EP50-516		ending in -EU)	EU-99
4	Cylinder Spacer	EP50-506	*	Hose Assembly (6 feet of 3/16" I.D. hose;	
† 5	Cylinder O-Ring	EP50-512		includes 1/8" NPT fittings at both ends)	DG100-130
6	Cylinder	EP50-508	*	Stylus	
7	Piston	EP50-507		fine point	EP50-515
† 8	Piston Stop	EP50-509		coarse point	EP50-517
9	Housing		*	Carrying Case	DG10-RF
	for models ending in -EU	EP50-EU-501	*	Stylus Grinding Collet	EP50-514
	for all other models	EP50-501	*	Tune-up Kit (includes illustrated	
† 10	Housing Seal (2)	EP50-511		parts 2, 5, 8 and 10)	EP50-TK1
11	Throttle Sleeve	EP50-510			

* Indicates Not Illustrated.

† Indicates Tune-up Kit part.

Parts and Maintenance

When tool life has expired, it is recommended that the tool be disassembled, degreased and parts separated by material for proper recycling.

Tool repair and maintenance should only be carried out by an authorized Service Center.

Refer all communications to the nearest **Ingersoll Rand** office or distributor.

Related Documentation

Manuals can be downloaded from ingersollrandproducts.com

For additional information, refer to:

Product Safety Information Manual 16576704.

Product Information Manual 16584039.

Maintenance Information Manual 16575946.