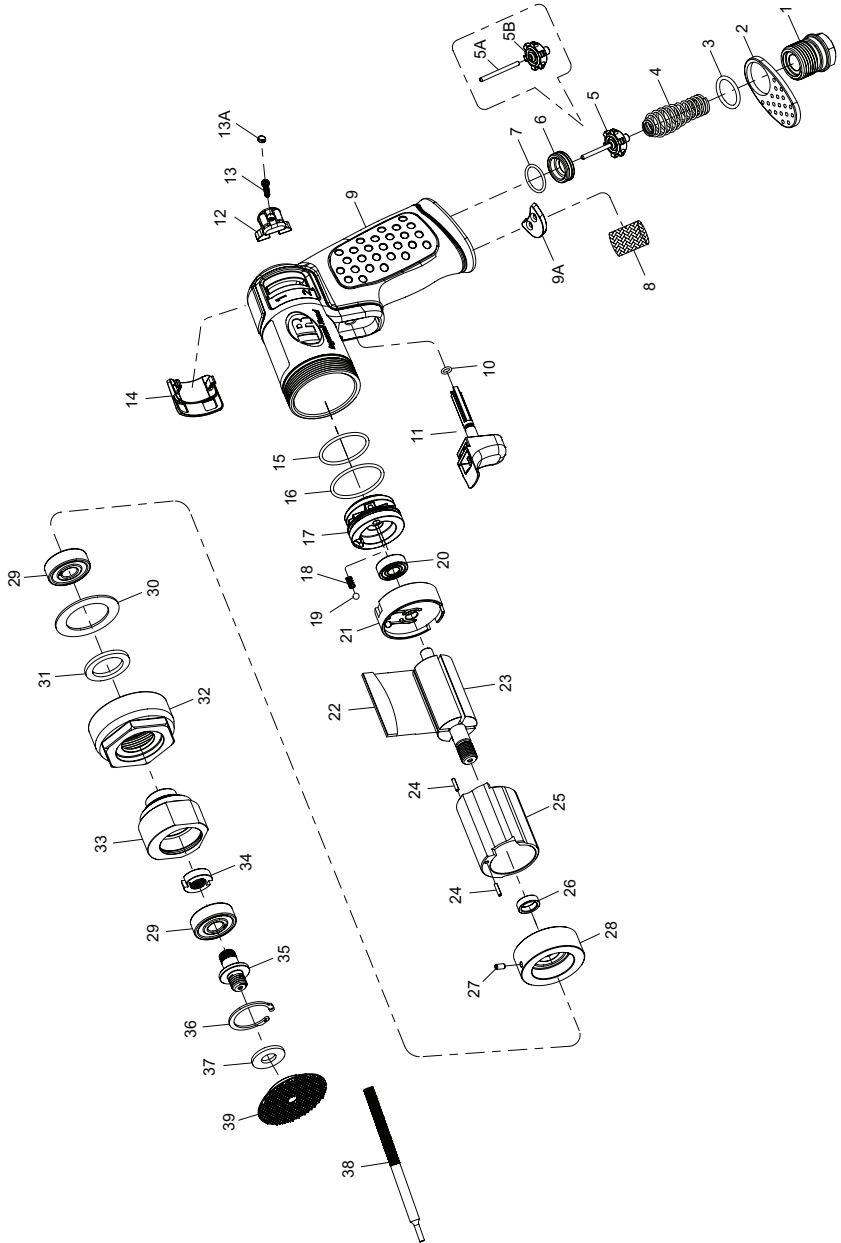


3128XPA Mini Random Orbital Sander - Exploded View



(Dwg. 47520791001)



3128XPA Mini Random Orbital Sander - Parts List

Item	Part Description	Part Number	(CCN)	Item	Part Description	Part Number	(CCN)
1	Air Inlet with Screen	2101XPA-A465	(47520794001)	17	Power Valve	3129XPA-329	(47520909001)
2	Exhaust Deflector	2101XPA-23	(47520795001)	18	Spring	2101XPA-250	(47520812001)
3	O-Ring	2101XPA-65	(47520796001)	19	Steel Ball	2101XPA-722	(47520813001)
4	Spring	2101XPA-51	(47520797001)	20	Ball Bearing	7804XPA-105	(47520853001)
5	Throttle Valve Assembly	2101XPA-A302	(47520798001)	21	Rear End Plate	3129XPA-12	(47520910001)
5A	Throttle Valve Pin	--	--	22	Rotor Blade (4)	2101XPA-42-4	(47520868001)
5B	Throttle Valve	--	--	23	Rotor	3128XPA-53	(47520924001)
6	Throttle Valve Seat	2101XPA-303	(47520799001)	24	Spring Pin (2)	2101XPA-120-2	(47520818001)
7	O-Ring	2101XPA-65A	(47520800001)	25	Cylinder	3129XPA-3	(47520912001)
8	Muffler Element	2101XPA-674	(47520801001)	26	Rotor Collar	3128XPA-80	(47520925001)
9	Motor Housing Assembly for 3128XPA	3128XPA-A40	(47520781001)	27	Spring Pin	2101XPA-15	(47520820001)
9A	Muffler Insert	3128XPA-310	(47520923001)	28	Front End Plate	3128XPA-11	(47520926001)
	Motor Housing	3129XPA-40	(47520908001)	29	Ball Bearing	3128XPA-24	(47520927001)
	Model Label	3128XPA-301	(47512912001)	30	Washer	3128XPA-248	(47520928001)
	Warning Label	3103XPA-99	(47512916001)	31	Felt Seal	3128XPA-31	(47520929001)
10	O-Ring	2101XPA-65B	(47520803001)	32	Clamp Nut	3128XPA-27	(47520930001)
11	Trigger	2101XPA-93	(47520804001)	33	Crank Shaft	3128XPA-777	(47520931001)
12	Reverse Knob	2101XPA-329A	(47520805001)	34	Random Shaft Nut	3128XPA-A190	(47520932001)
13	Screw	2101XPA-638	(47520806001)	35	Spindle	3128XPA-109	(47520933001)
13A	Plug	2101XPA-34	(47520807001)	36	Retainer	3128XPA-118	(47520934001)
14	Reverse Plate	2101XPA-851	(47520808001)	37	Washer	3128XPA-248A	(47520935001)
15	O-Ring	2101XPA-65C	(47520809001)	38	Bar Spanner	3128XPA-253	(47520936001)
16	O-Ring	2101XPA-65D	(47520810001)	39	3" Pad	03H-PAD-HL	(80199136)

Parts and Maintenance

When tool life has expired, it is recommended that the tool be disassembled, degreased and parts separated by material for proper recycling.

Tool repair and maintenance should only be carried out by an authorized Service Center.

Refer all communications to the nearest **Ingersoll Rand** office or distributor.

Related Documentation

Manuals can be downloaded from ingersollrandproducts.com

For additional information, refer to:

Product Safety Information Manual 04580387.

Product Information Manual 47520883001.

