



**04581310**  
Edition 3  
October 2009

# Fixtured In-Line DC Electric Nutraunner

QM3 Series

---

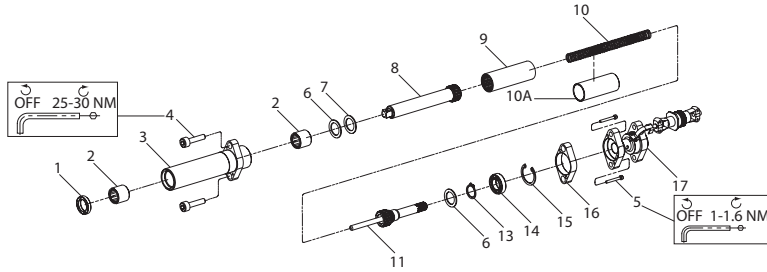
## Parts Information



Save These Instructions

 **Ingersoll Rand**

## QM3 Spindle/Transducer Assembly Exploded Diagram



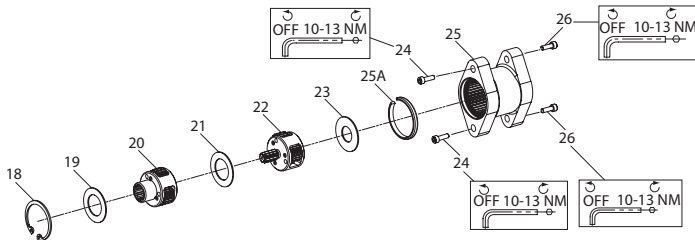
(Dwg. 16575953-2)

## QM3 Spindle/Transducer Parts List

Item	Part Description	Part Number	Item	Part Description	Part Number
	Housing Assembly	EE3-A580	9	Coupler	EE5-581-50
1	Seal	EE5-272	10	Spring	
2	Needle Bearing (2)	182A53-606		for QM3...H...(Spring, heavy)	EE5-626
3	Housing	EE3-580		for QM3...L...(Spring, light)	EE5-626-L
4	Screw M8X1.25X30 (2)	EE3-756-68	10A	Spindle Lock	EE5-LOCK
5	Screw M3X0.5X25 (2)	EE3-767-68	11	Input Spindle Assembly	EE3-A584
6	Washer	120E4-105	13	Retainer	FEA100-20
7	Washer	120E4-106	14	Bearing	EE5-593
8	Spindle		15	Retainer	EE5-20
	for QM3...62506	EE3S6-586-S	16	Plate Spacer	EE3-767
	for QM3...92506	EE3S6-586-M	17	Transducer Assembly	EE3-A756-25
	for QM3...22506	EE3S6-586-L	*	Transducer Spacer (for non torque controlled models)	EE3-755
	for QM3...62508	EE5S8-586-S			
	for QM3...92508	EE5S8-586-L			
for QM3...22508	EE5S8-586-L				

\* Not Illustrated.

## QM3 Spindle/Transducer Assembly Exploded Diagram

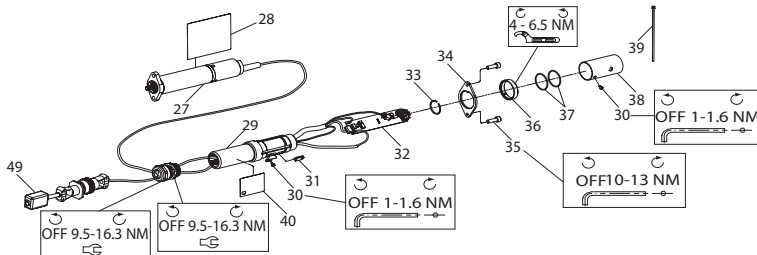


(Dwg. 16575961)

### QM3 Spindle/Transducer Parts List

Item	Part Description	QM3{008}{}	QM3{012}{}	QM3{016}{}	QM3{020}{}
		Part Number	Part Number	Part Number	Part Number
	Gear Case Assembly	EE3-M37-12P7	EE3-M37-18P9	EE3-M37-25P5	EE3-M37-32P1
18	Retaining Ring	W22-118	W22-118	W22-118	W22-118
19	Washer	EE3-80	EE3-80	EE3-80	EE3-80
20	Spindle Assembly	DEP20-A8	DEP5-A8	DEP15-A8	DEP5-A8
	Frame	---	---	---	---
	Gear	---	---	---	---
	Pin	---	---	---	---
	Bearing	---	---	---	---
21	Washer	DEP30-80	DEP30-80	DEP30-80	DEP30-80
22	Gear Head Assembly	GEA15-A216	DEP9-A216	DEP25-A216	DEP30-A216
	Frame	---	---	---	---
	Gear	---	---	---	---
	Pin	---	---	---	---
	Bearing	---	---	---	---
23	Washer	DEP30-81	DEP30-81	DEP30-81	DEP30-81
24	Screw M6X1X20 (2)	EE3-37-68	EE3-37-68	EE3-37-68	EE3-37-68
25	Gear Case	EE3-37	EE3-37	EE3-37	EE3-37
25A	Spacer Clip	EE3-37-18	EE3-37-18	EE3-37-18	EE3-37-18
26	Screw M6X1X18 (2)	EE7-53-68	EE7-53-68	EE7-53-68	EE7-53-68

### QM3 Motor/Electronics Pod Exploded Diagram



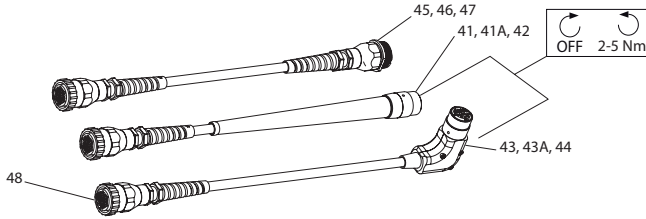
(Dwg. 16575979-2)

### QM3 Motor/Electronics Pod Parts List

Item	Part Description	Part Number	Item	Part Description	Part Number
27	Motor Assembly	EE3-D53	† 31	Memory Chip Assembly	TRP-A528
28	Warning Label	EE3-99	32	Communication Board	GEA15-A2309
	Strain Relief	EE9-445	33	Clip	GEA40-2309-104
	Cable Clamp	EE9-960-9	34	Flange	EE9-2309-767
	Cable Assembly	EE5-A240	35	Screw M6X1X18 (2)	EE7-53-68
	Screw (Back Cap)	EE9-231-68	36	Nut	EE9-2309-27
	Screw (Strain Relief)	EE9-531-68	37	O-Ring	GEA40-801
	Back Cap	EE3-231	38	Cover	EE9-2309-202
	Electronics Module	---	39	Cable Tie	EE9-200
29	Housing	EE9-2309-40	40	Logo Label	EE3-99A
30	Screw M3X0.5X4	EE9-2309-68	49	Clip on Ferrite	EE5-35A-1

† Optional part. Order O-Rings GEA40-801 with Memory Chip.

## Motor/Electronics Pod Exploded Diagram



(Dwg. 80149982)

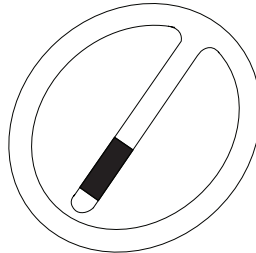
## QM3 Motor/Electronics Pod Parts List

Item	Part Description	Part Number	Item	Part Description	Part Number
41	Power Cord Assembly (3 Meter)	GEA40-CORD-3M	45	Power Cord Extension Assembly (10 Meter)	GEA40-EXT-10M
41A	Power Cord Assembly (6 Meter)	GEA40-CORD-6M	46	Power Cord Extension Assembly (20 Meter)	GEA40-EXT-20M
42	Power Cord Assembly (10 Meter)	GEA40-CORD-10M	47	Power Cord Extension Assembly (40 Meter)	GEA40-EXT-40M
43	Power Cord Assembly, 90 Deg. (3 Meter)	GEA40-CORD-3M-90	48	Connector Ring	GEA40-26F-12
43A	Power Cord Assembly, 90 Deg (6 Meter)	GEA40-CORD-6M-90	*	IR# 222 Grease (1 lb.) (0.45 kg.)	EE9-222-1LB
44	Power Cord Assembly, 90 Deg. (10 Meter)	GEA40-CORD-10M-90			

\* Not Illustrated.

## Socket Retainers (One Piece)

Part Number	Drive Size	Inside Diameter	Pin Size
	in. (mm)	in. (mm)	in. (mm)
RR10001	3/8" (9.5)	0.600 (15.2)	0.110 (2.8)
RR10002	3/8" (9.5)	0.670 (17.0)	0.110 (2.8)
RR10003	3/8" (9.5)	0.750 (19.1)	0.110 (2.8)
RR10006	3/8" (9.5)	0.950 (24.1)	0.110 (2.8)
RR10011	3/8" (9.5)	0.820 (20.8)	0.110 (2.8)
RR10013	3/8" (9.5)	1.100 (28.0)	0.110 (2.8)
RR10004	1/2" (12.7)	0.800 (20.3)	0.130 (3.3)
RR10005	1/2" (12.7)	0.870 (22.1)	0.130 (3.3)
RR10007	1/2" (12.7)	0.950 (24.1)	0.130 (3.3)
RR10008	1/2" (12.7)	1.150 (29.2)	0.130 (3.3)
RR10009	1/2" (12.7)	1.300 (33.0)	0.130 (3.3)
RR10010	1/2" (12.7)	1.450 (36.8)	0.130 (3.3)
RR10014	1/2" (12.7)	1.050 (26.7)	0.130 (3.3)



## Packaging (Corrugated Box)

Packaging P/n	Description
BOX-30	Corrugated Box
BOX-30X	Foam

## Suggested Tools

Item	Tool Used	Description	Where Used?
1	Pin Spanner Wrench	3 mm or 1/8" pin	Cable, Electronics Pod Flange Nut
2	Torque Wrench	60 Nm Capacity	General Use
3	Adjustable Wrench	---	Electronics Pod Strain Relief
4	Metric Allen Key Set	2.5 - 8 mm	General Use
5	Internal Snap Ring Pliers	---	General Use
6	Pick	---	O-Rings, Retainers, etc.

---

## **Parts and Maintenance**

When the life of the tool has expired, it is recommended that the tool be disassembled, degreased and parts be separated by material so that they can be recycled.

Tool repair and maintenance should only be carried out by an authorized Service Center.

Refer all communications to the nearest **Ingersoll Rand** Office or Distributor.

---

## **Related Documentation**

For additional information refer to:

Product Safety Information Manual 16573693.

Product Information Manual 04581278.

Maintenance Information Manual 04581351.

Manuals can be downloaded from [www.ingersollrandproducts.com](http://www.ingersollrandproducts.com).

---

**Notes:**

**Notes:**

---

[www.ingersollrandproducts.com](http://www.ingersollrandproducts.com)

© 2009 **Ingersoll Rand** Company

