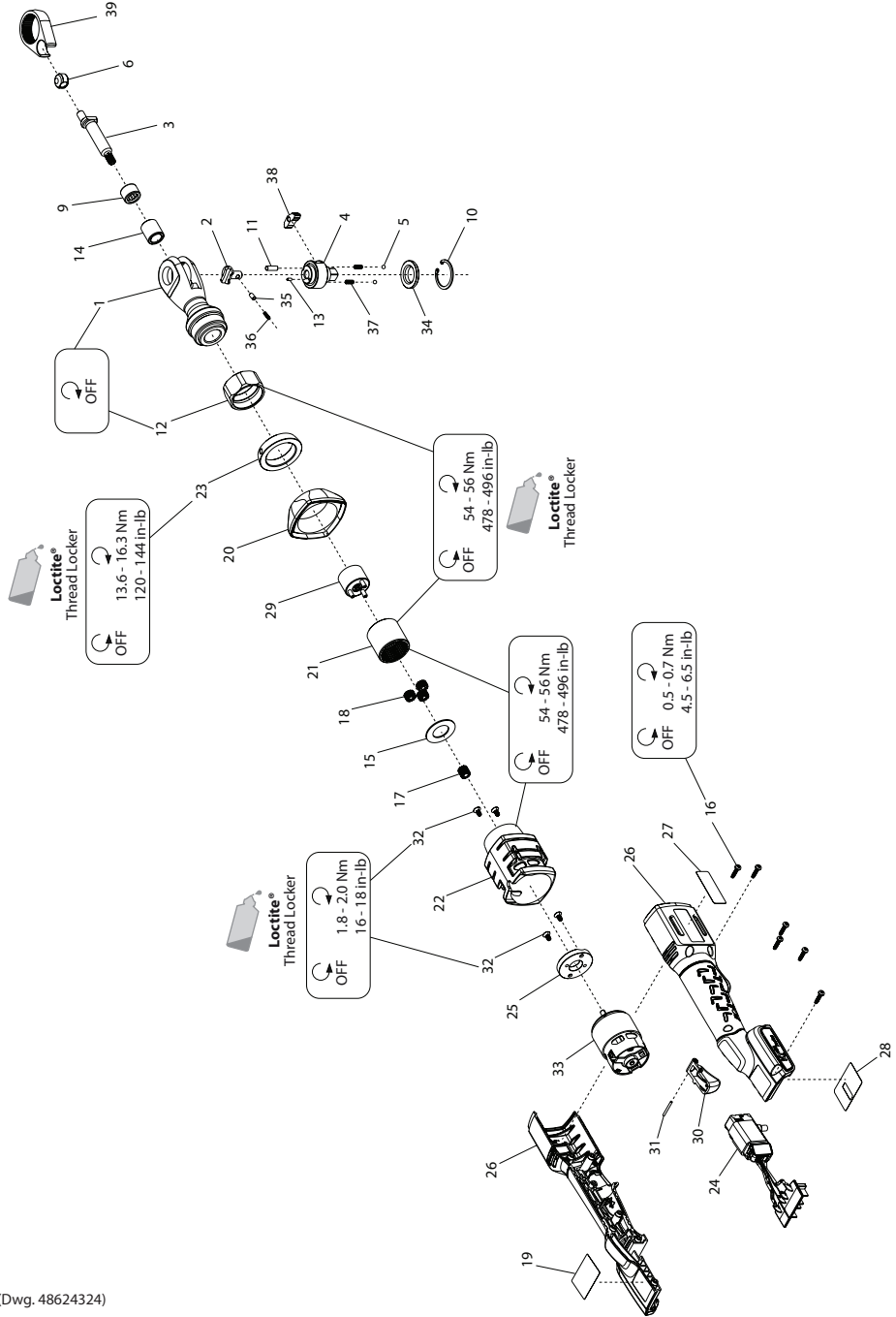


# R3000 Series, Cordless Ratchet Wrench - Exploded View



(Dwg. 48624324)



**48621296**  
 Edition 5  
 January 2015

## R3000 Series, Cordless Ratchet Wrench - Parts List

Item	Part Description	Part Number	(CCN)	Item	Part Description	Part Number	(CCN)
	Tool Housing Kit	R3100-K40	(47500490001)	5	Friction Ball (2 per kit)	--	--
16	Screw, Housing (6 per kit)	--	--	11	Pawl Retaining Pin	--	--
19	Warning Label	--	--	13	Stop Pin	--	--
26	Tool Housing	--	--	35	Lock Pin	--	--
27	Information Label	--	--	36	Lock Spring	--	--
28	Serial Number Label	--	--	37	Friction Spring (2 per kit)	--	--
	Motor Housing Kit	R3100-40YK	(47500491001)	38	Pawl	--	--
20	Case, Aluminum	--	--	34	Thrust Washer	--	--
22	Housing, Motor	--	--	10	Retaining Ring	--	--
23	Coupling Nut	--	--		Fastener Kit (includes items 16 & 32)	R3100-K105	(47500497001)
25	Motor Adapter Plate	--	--		Label Kit (includes items 19, 27 & 28)	R3100-K99	(47500498001)
24	Switch & Contact Block Assembly	R3100-K93	(47500492001)		Pawl Kit (includes items 11, 35, 36 & 38)	107XPA-K43	(80206568)
	Trigger Assembly	R3100-K531	(47500493001)		Spring Kit (includes items 5, 10, 34 & 37)	107XPA-SK	(80206550)
30	Trigger	--	--		* Grease		
31	Pin, Trigger	--	--	*	IR #67 (1 lb can) - for Gearing	67 1 LB	(03773009)
	Electric Motor Kit	R3100-K54	(47500494001)	*	IR #67 (8 lb can) - for Gearing	67 8 LB	(03820008)
17	Pinion, 13 Tooth	--	--	*	IR #70 (1 lb can) - for Ratchet Head	70 1 LB	(3364619)
32	Screw, Flat (4 per kit)	--	--	*	IR #70 (8 lb can) - for Ratchet Head	70 8 LB	(3820024)
33	Motor	--	--	*	Spline Wrench (for removal of item 21)	170-SW	(16591505)
15	Washer	R3100-K18	(47500495001)	*	20V Li-Ion Battery Pack		
	Gearing Kit	R3100-GK	(47500496001)		1.5 Ah	BL2005	(48386783)
18	Gear, Planet	--	--		2.5Ah	BL2012	(47515903001)
21	Internal Gear	--	--		3 Ah	BL2010	(48386791)
29	Spindle Assembly	--	--		5.0Ah	BL2022	(47515902001)
12	Coupling Nut	170-27	(22030936)	*	Battery Charger	BC1121	(47507879001)
	Ratchet Housing Assembly	107XPA-A322	(16590481)	*	Protective Boot, Ratchet Head	107-BOOT	(45505328)
1	Ratchet Housing	--	--	*	Protective Battery Boot		
3	Crank Shaft	107XPA-35	(16577819)		for BL2005, BL2012	BL2005-BOOT	(47510965001)
6	Drive Bushing	170-36	(22030738)		for BL2010, BL2022	BL2010-BOOT	(47510964001)
9	Crankshaft Needle Bearing	--	--	*	Carrying Case	R3000-CASE	(48622948)
14	Crankshaft Bushing	--	--	*	Case Latch	W7000-LATCH	(47507275001)
39	Yoke	109XPA-37	(80183288)				
	Ratchet Head Kit						
	For R3130	107XPA-TRK1	(16590416)				
	For R3150	107XPA-TRK1	(16590424)				
2	Reverse Button	107XPA-38	(16577793)				
4	Anvil Assembly						
	For R3130	107XPA-A44	(16590499)				
	For R3150	107XPA-A44	(16590507)				

\* Not illustrated

## Parts and Maintenance

When tool life has expired, it is recommended that the tool be disassembled, degreased and parts separated by material for proper recycling.

Tool repair and maintenance should only be carried out by an authorized Service Center.

Refer all communications to the nearest **Ingersoll Rand** office or distributor.

## Related Documentation

Manuals can be downloaded from [ingersollrandproducts.com](http://ingersollrandproducts.com)

For additional information, refer to:

Cordless Ratchet Wrench Product Safety Information Manual 80232929.

Cordless Ratchet Wrench Product Information Manual 48621270.



ingersollrandproducts.com  
© 2015 Ingersoll Rand

48621296  
Edition 5  
January 2015