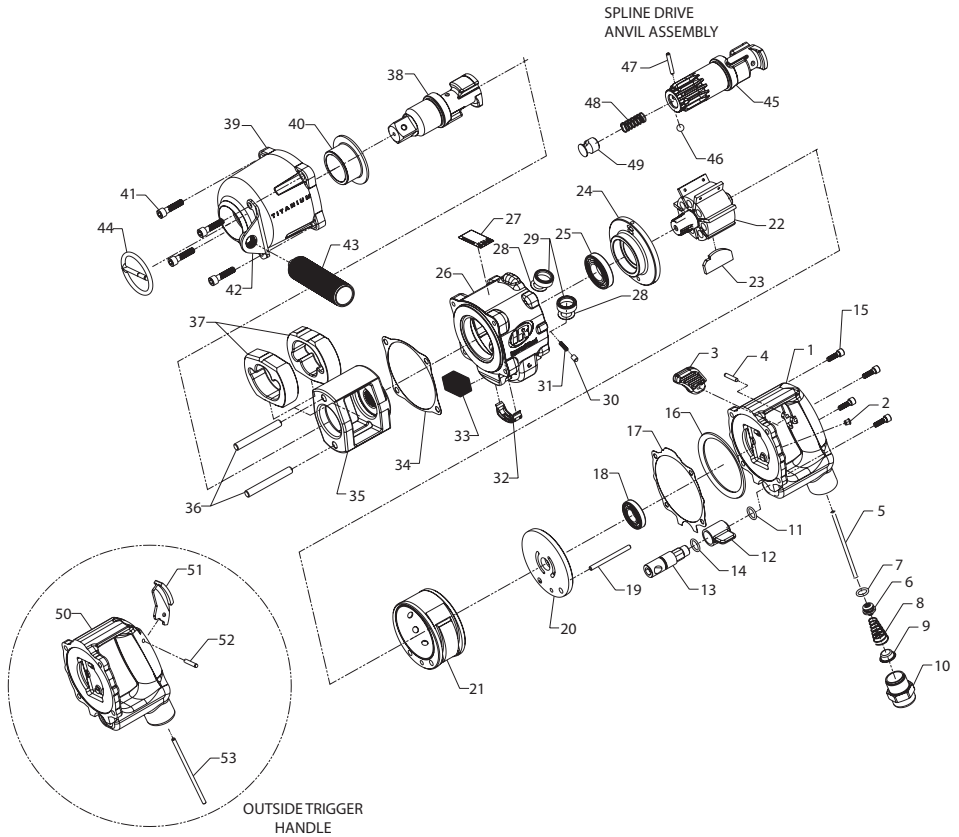


# 3940 and 3942 Series Air Impact Wrench - Exploded View



(Dwg. 80166754)

## 3940 and 3942 Series Air Impact Wrench - Parts List

Item	Part Description	Part Number	Item	Part Description	Part Number	
1	Inside Trigger Handle Assembly	3940-A92	† • 14	Reverse Valve Bushing Seal	85H-167	
2	Grease Fitting	130SR-188	15	Handle Cap Screw (4)	3940-638	
3	Trigger	3940-93	16	Motor Clamp Washer	2934-207	
4	Trigger Pin	280-265	† • 17	Handle Gasket	3940-283	
5	Throttle Valve Plunger	3940-302	† 18	Rear Rotor Bearing	508-97	
6	Throttle Valve Assembly	2934-A50	19	Cylinder Dowel		
† • 7	Throttle Valve Seal	2934-159			for 3940	3934-98
† 8	Throttle Valve Spring	834-51-5		for 3942	3940-98	
† • 9	Air Strainer Screen	434-61	20	Rear End Plate	2934-12	
10	Straight Inlet	845-565	21	Cylinder		
† • 11	Reverse Valve Seal	R00BR-210			for 3940	2934-3
12	Reverse Lever	3940-75		for 3942	2940-3	
13	Reverse Valve		22	Rotor		
	for 3940	3934-329			for 3940	3934-53
	for 3942	3940-329			for 3942	3940-53

Item	Part Description	Part Number	Item	Part Description	Part Number
† • 23	Vane Packet (set of 7 vanes)		39	Hammer Case Assembly	3940-D727
	for 3940	2934-42-7	40	Hammer Case Bushing	2934-641
	for 3942	2940-42-7	41	Hammer Case Cap Screw (4)	3940-105
24	Front End Plate	3940-11	42	Dead Handle Bracket	3940-364
† 25	Front Rotor Bearing	810-97	43	Dead Handle	3940-48
26	Motor Housing Assembly		44	Socket Retainer	RR10015S
	for 3940	3934-A40	45	Spline Drive Anvil Assembly	2940-A526
	for 3942	3940-A40	† 46	Socket Retaining Ball	D04-280
27	Warning Label for Impacttools	WARNING-2-99	† 47	Plunger Retaining Pin	845-128
† 28	Air Port Gasket Retainer (2)	2940-200	† 48	Retaining Plunger Spring	2940-231-5
† • 29	Air Port Gasket (2)	R44H-210A	49	Retaining Ball Plunger	845-230
† 30	Reverse Lock Plunger	4U-663B	50	Outside Trigger Handle Assembly	3940-A1
† 31	Reverse Lock Plunger Spring	4U-664-10	51	Trigger	844-78
32	Exhaust Deflector		52	Trigger Pin	280-265
	for 3940	3934-123	53	Throttle Valve Plunger (Also includes illustrated parts 2,6, 7, 8, 9, 10 & 11)	3940A-302
	for 3942	3940-123			
† 33	Exhaust Silencer		*	Grease Gun	R000A2-228
	for 3940	3934P-311	*	Tune-up Kit (includes illustrated parts 7, 8, 9, 11, 14, 17, 18, 23, 25, 28[2], 29[2], 30, 31, 33, 34, 46, 47, 48)	3940-TK1
	for 3942	3940P-311			
† 34	Hammer Case Gasket	3940-36		for 3942	3942-TK1
35	Hammer Frame Assembly	2940-A703			
36	Hammer Pin (2)	2940-704			
37	Hammer (2)	2940-724			
38	1" Square Drive Anvil				
	Standard Length	2940-726			
	6" Extended Length	2940-314-6			

\* Not Illustrated.

† Indicates Tune-up Kit Part

• To keep downtime to a minimum, it is desirable to have on hand certain repair parts. We recommend that you stock one (pair or set) of each part indicated by a bullet (•) for every four tools in service.

## Parts and Maintenance

When the life of the tool has expired, it is recommended that the tool be disassembled, degreased and parts be separated by material so that they can be recycled.

Tool repair and maintenance should only be carried out by an authorized Service Center.

Refer all communications to the nearest **Ingersoll Rand** Office or Distributor.

## Related Documentation

For additional information refer to:

Air Impact Wrench Product Safety Information Manual 04580916.

Air Impact Wrench Product Information Manual 10569382.

Air Impact Wrench Maintenance Manual 10569408.

Manuals can be downloaded from [ingersollrandproducts.com](http://ingersollrandproducts.com)