



16573271  
Edition 3  
October 2014

# Air Grinder

77H Series

---

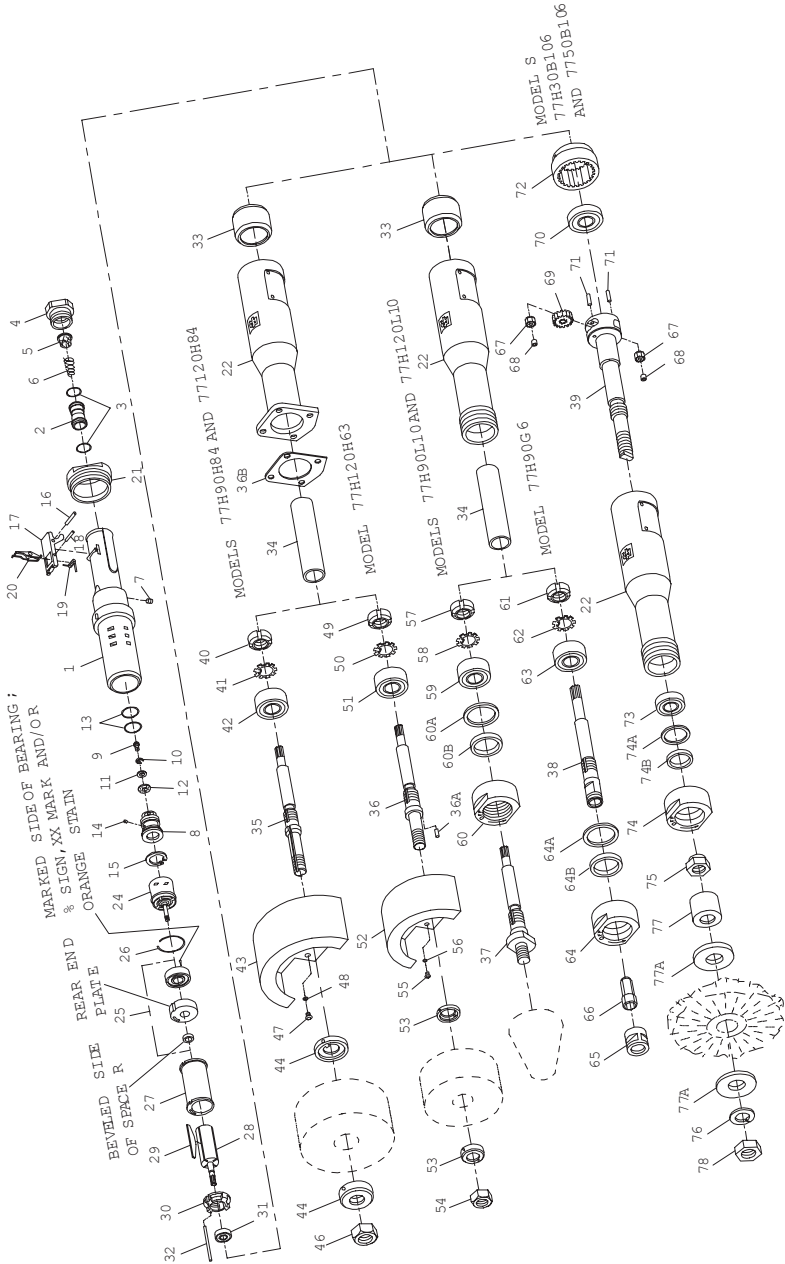
## Parts Information



Save These Instructions

 **Ingersoll Rand**<sup>®</sup>

# 77H Series Air Grinder - Exploded View



(Dwg. TPA1054-5)

## 77H Series Air Grinder - Parts List

Item	Part Description	Part Number	Item	Part Description	Part Number	
1	Throttle Handle Assembly	77H-A160	+ 24	Controller Assembly (consists of Controller and Rear End Plate Assembly)		
2	Throttle Valve Assembly	88V60-A302			for 77H90G6, 77H90H84, 77H90L10 and 77H30B106	77H90-A524ARH
3	Seal (2)	C321-606			77H120-A524ARH	77H120-A524ARH
4	Inlet Bushing	77H-38				
5	Inlet Bushing Screen	834-61				
6	Throttle Valve Spring	77H-262				
7	Oil Chamber Plug	R2-227		25	Rear End Plate Assembly (consists of rear end plate, rotor bearing and required spacers)	77H-A12
8	Throttle Valve Seat Support Assembly	77H-A303				
9	Valve Seat Screw	PS3-83	26	Rear End Plate Gasket	77H-739	
10	Valve Seat Lock Washer	H54U-352	27	Cylinder	77H-3	
11	Valve Seat Washer	99V60-155	+ 28	Rotor		
12	Valve Seat	R4-159A			for 77H30B106 and 77H50B106 (9 teeth)	77H30-53RH
13	Valve Support Seal (2)	SPP101-743			for all others (13 teeth)	77H-53ARH
14	Oiler Feeder Plug	77H-75	29	Vane Packet (set of 4 Vanes)	77H-42-4	
15	Throttle Valve Seat Support Retainer	77H-518			30	Front End Plate
16	Throttle Lever Pin	MR-100	31	Front Rotor Bearing	77H-24	
17	Throttle Lever Assembly	77H-A400	32	Cylinder Dowel	77H-98	
18	Lever Lock Pin	R100B-120	33	Motor Spacer	77E-208-H8	
19	Lever Lock Spring	DG120-405	34	Arbor Coupling	77E-304A	
20	Lever Lock	DG120-402	*	Controller Wrench	77H-950	
21	Coupling Nut	77H-282	*	Valve Seat Support Retaining Pliers	77H-154	
# 22	Arbor Housing Assembly	for 77H90H84, 77H120H84 and 77H120H63	77E-A40-H8	*	Coupling Nut Wrench	77H-281
			for 77H90H84-EU, 77H120H84-EU, and 77H120H63-EU	77E-EU-A40-H8	*	Vibra-Tite*** (0.6 cc) (2)
		for 77H90L10, 77H120L10, 77H90G6, 77H30B106 and 77H150B106	77E-A40-G4	*	Adhesive Kit	77H-KVLT
		for 77H90L10-EU, 77H120L10-EU, 77H30B106-EU and 77H150B106-EU	77E-EU-A40-G4	*	Tune-up Kit (includes illustrated parts 3 [2], 5, 6, 12, 13 [2], 26 and 29)	77H/77A-TK3
		THE FOLLOWING PARTS ARE USED IN MODELS 77H90H84, 77H90H84-EU, 77H120H84 AND 77H120H84-EU TYPE 1 RADIAL WHEEL GRINDERS				
			35	Arbor (13 teeth)	77E-4A-H8	
			36B	Dust Seal	77H-930	
			40	Bearing Locknut	77H-824-H6	
*	Grease Fitting	DOF9-879	41	Bearing Lock Washer	77H-66-H6	
*	Nameplate Kit	77H-EU-K301	42	Wheel End Bearing	77H-33-H6	
*	Nameplate Screw (4) (for all models ending in -EU)	BN403-302	43	Wheel Guard (4" x 1")	77H-941	
*	Warning Label (for all models ending in -EU)	EU-99	44	Wheel Flange (2)	77H-16-H8	
*	Nameplate Kit (for all other models)	77H-K301	46	Wheel Nut	215-182	
	Nameplate Screw (4)	BN403-302	47	Wheel Guard Screw		
	Warning Label				M6 x 1-6g 14 mm long (2)	77H-638
	for 77H30B106 and 77H50B106	WARNING-5-99		10-32 x 1/2" long (2)	FEA100-26	
	for all other models not ending in -EU	WARNING-4-99	48	Wheel Guard Lock Washer (2) (for use with No. 77H-638)	88H60-67	

\* Not illustrated

# For all models, whenever a new Arbor Housing is installed, select the correct Nameplate from the Nameplate Kit and attach it to the Housing with the Nameplate Screws.

+ Early Models of these Grinders had Rotors and Controller Assemblies with left-hand threads. If you have a model with a left-hand thread, contact Ingersoll Rand when ordering replacement parts.

\*\* Registered trademark of ND Industries.

## 77H Series Air Grinder - Parts List

Item	Part Description	Part Number	Item	Part Description	Part Number
THE FOLLOWING PARTS ARE USED IN MODELS 77H120H63 AND 77H120H63-EU TYPE 1 RADIAL WHEEL GRINDERS			*	Collet Nut and Arbor Wrench (2) (3/4")	DG120-69
36	Arbor (13 teeth)	77E-A4A-H6	66	Collet	
36A	Wheel Flange Pin	77H-84		for 1/4" or 6 mm diameter shank accessory	G160HD-700-1/4
36B	Dust Seal	77H-930		for 3/8" diameter shank accessory	DG120-700-G6
49	Bearing Locknut	77H-824-H6	THE FOLLOWING PARTS ARE USED IN MODELS 77H30B106, 77H30B106-EU, 77H50B106 AND 77H50B106-EU WIRE BRUSH MACHINES		
50	Bearing Lock Washer	77H-66-H6	39	Wire Brush Arbor	77E-4-B10
51	Wheel End Bearing	77H-33-H6	67	Planet Gear Assembly (2)	77H-A10
52	Wheel Guard (3" x 1/2")	77H-931	68	Planet Gear Bearing (one for each Gear)	G700-654
53	Wheel Flange (2)	77H-16-H6	69	Rotor Pinion (9 teeth)	77H-17
54	Wheel Nut	23-697	70	Gear Frame Bearing	WFS182-97
55	Wheel Guard Screw		71	Planet Gear Shaft (2)	G700-191
	M6 x 1-6g 14 mm long (2)	77H-638	72	Internal Gear	77H-406
	10-32 x 1/2" long (2)	FEA100-26	73	Wheel End Bearing	77E-33-B10
56	"Wheel Guard Screw Lock Washer (2) (for use with 77H-638)"	88H60-67	74	Wheel Bearing Cap	77H-19A
THE FOLLOWING PARTS ARE USED IN MODELS 77H90L10, 77H90L10-EU, 77H120L10 AND 77H120L10-EU CONE WHEEL GRINDERS			74A	Cap Spring	77H-20
37	Cone Wheel Arbor (13 teeth)		74B	Dust Washer	66H-35
	3/8"-24 thread	77H-4A-L6	75	Wheel End Bearing Nut	77E-91A
	1/2"-13 thread	77H-4A-L8	76	Wire Brush Lock Washer	A-67
	5/8"-11 thread	77E-4A-L10	77	Wire Brush Spacer (Long)	77H50-775
57	Bearing Locknut	77H-824-H6	77A	Wire Brush Spacer (Short) (2)	R3F-286
58	Bearing Lock Washer	77H-66-H6	78	Wire Brush Nut	HU-776
59	Wheel End Bearing	77H-33-H6	*	Wheel Bearing Nut Wrench (1")	7RAQT4-254
60	Wheel Bearing Cap	77H-19A	*	Wire Brush Nut Wrench (15/16")	7560-24818
60A	Cap Spring	77H-20	* Not illustrated.		
60B	Dust Washer	66H-35			
*	Cone Wheel Arbor Wrench (1")	7RAQT4-254			
THE FOLLOWING PARTS ARE USED IN MODEL 77H90G6 COLLET TYPE GRINDER					
38	Collet Arbor (13 teeth)	77E-4A-G4			
61	Bearing Locknut	77H-824-H6			
62	Bearing Lock Washer	77H-66-H6			
63	Wheel End Bearing	77H-33-H6			
64	Wheel Bearing Cap	77H-19A			
64A	Cap Spring	77H-20			
64B	Dust Washer	66H-35			
65	Collet Nut	DG120-699A			

---

## **Parts and Maintenance**

When the life of the tool has expired, it is recommended that the tool be disassembled, degreased and parts be separated by material so that they can be recycled.

Tool repair and maintenance should only be carried out by an authorized Service Center.

Refer all communications to the nearest **Ingersoll Rand** Office or Distributor.

---

## **Related Documentation**

For additional information refer to:

Product Safety Information Manual 04584959.

Product Information Manual 16576100.

Maintenance Information Manual 16573339.

Manuals can be downloaded from [ingersollrandproducts.com](http://ingersollrandproducts.com)

---

**Notes:**

**Notes:**

---

[ingersollrandproducts.com](http://ingersollrandproducts.com)

© 2014 *Ingersoll Rand*

