



TL-RTS-PLM
Edition 2
July 2024

Mechanical Pulse Tool

RTS Connect Series

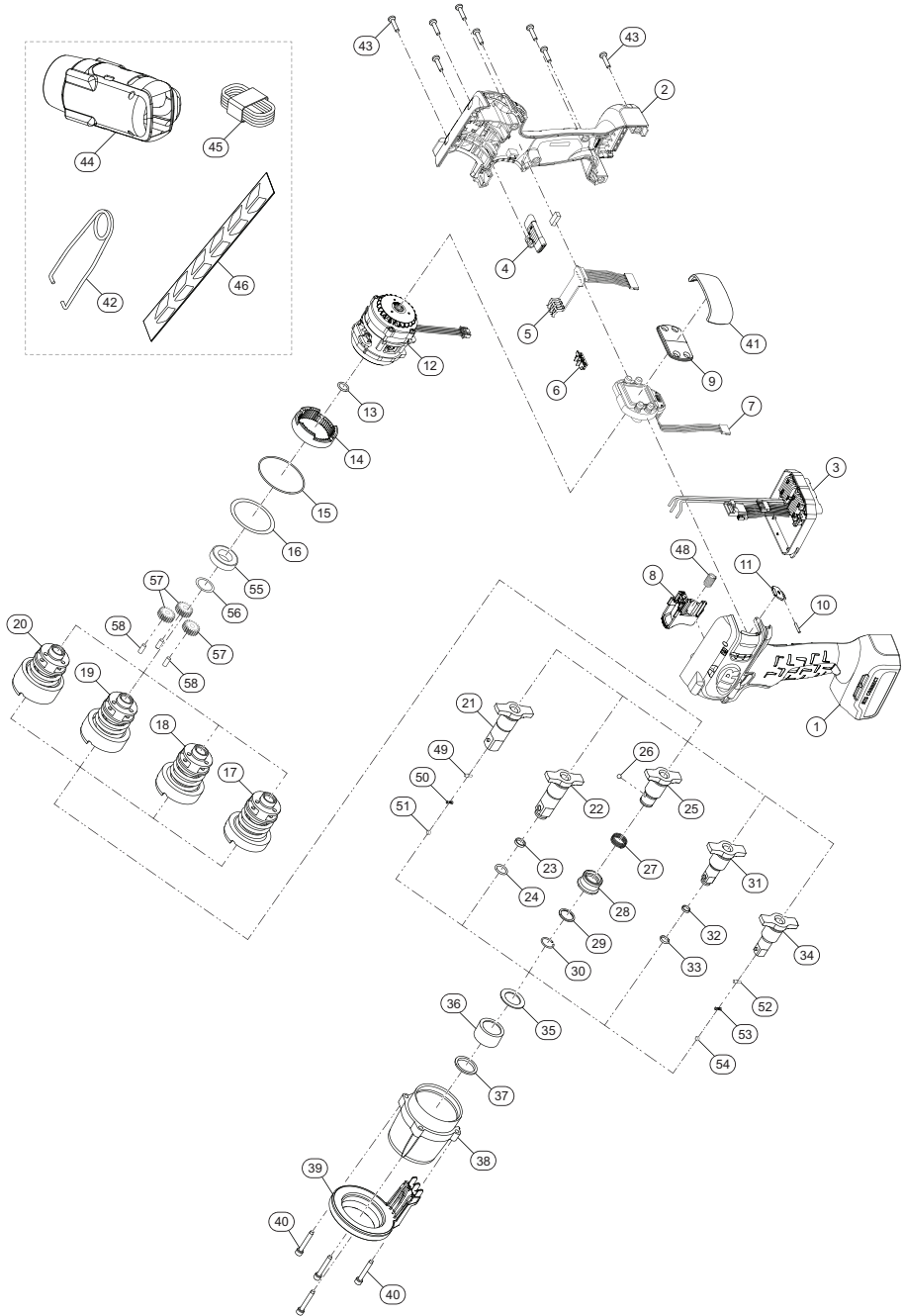
Parts Information



Save These Instructions

 **Ingersoll Rand**[®]

RTS Connect Series, Mechanical Pulse Tool - Exploded View



(Dwg. TL-RTS-PLM-1)

RTS Connect Series, Mechanical Pulse Tool - Parts List

Item	Part Description	Part Number (CCN)
*	Housing Kit	TK-RTS-040
1	Left Housing	---
2	Right Housing	---
9	Back Cap	---
10	USB Door Pin	---
11	USB Door	---
40	Hammer Case Screw (4 required)	---
43	Housing Screw (8 required)	---
*	Trigger Kit	TK-RTS-250
4	Directional Switch	---
8	Trigger	---
48	Trigger Spring	---
*	Display Protector Kit	TK-RTS-441
41	Display Protector	---
*	Suspension Bail Kit	VP1-365 (48382147)
42	Suspension Bail	---
*	Fastener Kit	TK-RTS-HWK
40	Hammer Case Screw (4 required)	---
43	Housing Screw (8 required)	---
*	LED Kit	TK-RTS-KLED
39	LED Assembly	---
*	Hammer Case and LED Kit	TK-RTS-727
35	Hammer Case Thrust Washer	---
36	Hamer Case Bearing	---
37	Hammer Case Seal	---
38	Hammer Case	---
39	LED Assembly	---
40	Hammer Case Screw (4 required)	---
*	Socket Retainer Kit for 1/2" Square Drive	2125QTI-K425 (80107733)
23	O-Ring	---
24	Socket Retainer	---
*	Socket Retainer Kit for 3/8" Square Drive	1702-K425 (47533407001)
32	O-Ring	---
33	Socket Retainer	---
*	Anvil Kit, 1/4" Quick Change	TK-RTS-926
25	1/4" Hex Anvil	---
26	Ball	---
27	Spring	---
28	Bit Sleeve	---
29	Washer	---
30	Snap Ring	---
*	Anvil Kit, Hog Ring/Thru Hole 3/8" Square	TK-RTS-626-H6
31	3/8" Square Drive Anvil	---
32	O-Ring	---
33	Socket Retainer	---
*	Anvil Kit, Hog Ring/Thru Hole 1/2" Square	TK-RTS-626-H8
22	1/2" Square Drive Anvil	---
23	O-Ring	---
24	Socket Retainer	---

Item	Part Description	Part Number (CCN)
*	Anvil Kit, Pin 3/8" Square	TK-RTS-726-S6
34	3/8" Pin Anvil	---
52	Pin	---
53	Spring	---
54	Plug	---
*	Anvil Parts Kit, Pin 3/8" Square	TK-RTS-726-S6-HWK
52	Pin	---
53	Spring	---
54	Plug	---
*	Anvil Kit, Pin 1/2" Square	TK-RTS-726-S8
21	1/2" Pin Anvil	---
49	Pin	---
50	Spring	---
51	Plug	---
*	Anvil Parts Kit, Pin 1/2" Square	TK-RTS-726-S8-HWK
49	Pin	---
50	Spring	---
51	Plug	---
17	Mechanism Kit for RTS025 Models	TK-RTS-675-025
18	Mechanism Kit for RTS060 Models	TK-RTS-675-060
19	Mechanism Kit for RTS140 Models	TK-RTS-675-140
20	Mechanism Kit for RTS225 Models	TK-RTS-675-225
*	Backcap Kit	TK-RTS-144
9	Backcap	---
*	Communication and Display Assembly Kit	TK-RTS-499-2
7	Communication Board	---
*	Trigger Board Kit	TK-RTS-499-5
5	Trigger Board Assembly	---
6	Spacer, Trigger Board	---
*	Motor Kit	TK-RTS-MRK
12	Motor	---
55	Bearing	---
*	Drive Kit	TK-RTS-DRK
3	Drive	---
*	Gear Kit	TK-RTS-GRK
14	Ring Gear	---
56	Washer	---
57	Planet Gear (3 required)	---
58	Gear Pin (3 required)	---
*	USB Kit	TK-RTS-USB
45	USB Cable	---
*	Seal Kit	TK-RTS-OSK
13	O-Ring	---
15	Hammer Case O-Ring	---
16	Hammer Case Washer	---
35	Thrust Washer	---
37	Nose Seal	---
*	Tool Label Kit	VP1-300 (47105416)
46	Tool Label	---

Item	Part Description	Part Number (CCN)
44	Boots	---
*	Boot, Red	TK-RTS-BOOT-RD
	Boot, Green	TK-RTS-BOOT-GR
	Boot, Blue	TK-RTS-BOOT-BL
	Boot, White	TK-RTS-BOOT-WH
	Boot, Gray	TK-RTS-BOOT-GY
	Boot, Orange	TK-RTS-BOOT-OR
*	Warning Label	TL-W3001-099
*	20V Li-ion Battery Pack	---
	2.5 Ah	BL2012 (47515903001)
	5.0 Ah	BL2022 (47515902001)
*	Battery Charger	---
	Battery Charger, Single Bay	BC1121 (47507879001)
	Battery Charger, Dual Bay	BC1221
*	Protective Battery Boot	---
	For 2.5 Ah & 2.8 Ah Batteries	BL2005-BOOT (47510965001)
	For 5.0 Ah & 5.6 Ah Batteries	BL2010-BOOT (47510964001)
*	Grease	---
	IR # 105 (4 oz. tube) for Impact Mechanism and Anvil	105-4T (04616116)
	IR # 105 (1 lb can) for Impact Mechanism and Anvil	105-1LB (04279147)
*	Grease Gun	R000A2-228 (03095015)
*	Storage/Carrying Bag	TB4 (47543666001)

* Indicates not illustrated.

Parts and Maintenance

When tool life has expired, it is recommended that the tool be disassembled, degreased and parts separated by material for proper recycling.

Tool repair and maintenance should only be carried out by an Authorized Service Center.

Refer all communications to the nearest **Ingersoll Rand** office or distributor.

Related Documentation

Manuals can be downloaded from ingersollrand.com

For additional information, refer to:

Product Safety Information Manual TL-RTS-SIM

Product Information Manual TL-RTS-PIM

CE-Declaration of Conformity TL-RTS-DOC

UK-Declaration of Conformity TL-RTS-DOC-UK

Notes:

Notes:

[ingersollrand.com](https://www.ingersollrand.com)

© 2024 *Ingersoll Rand*

