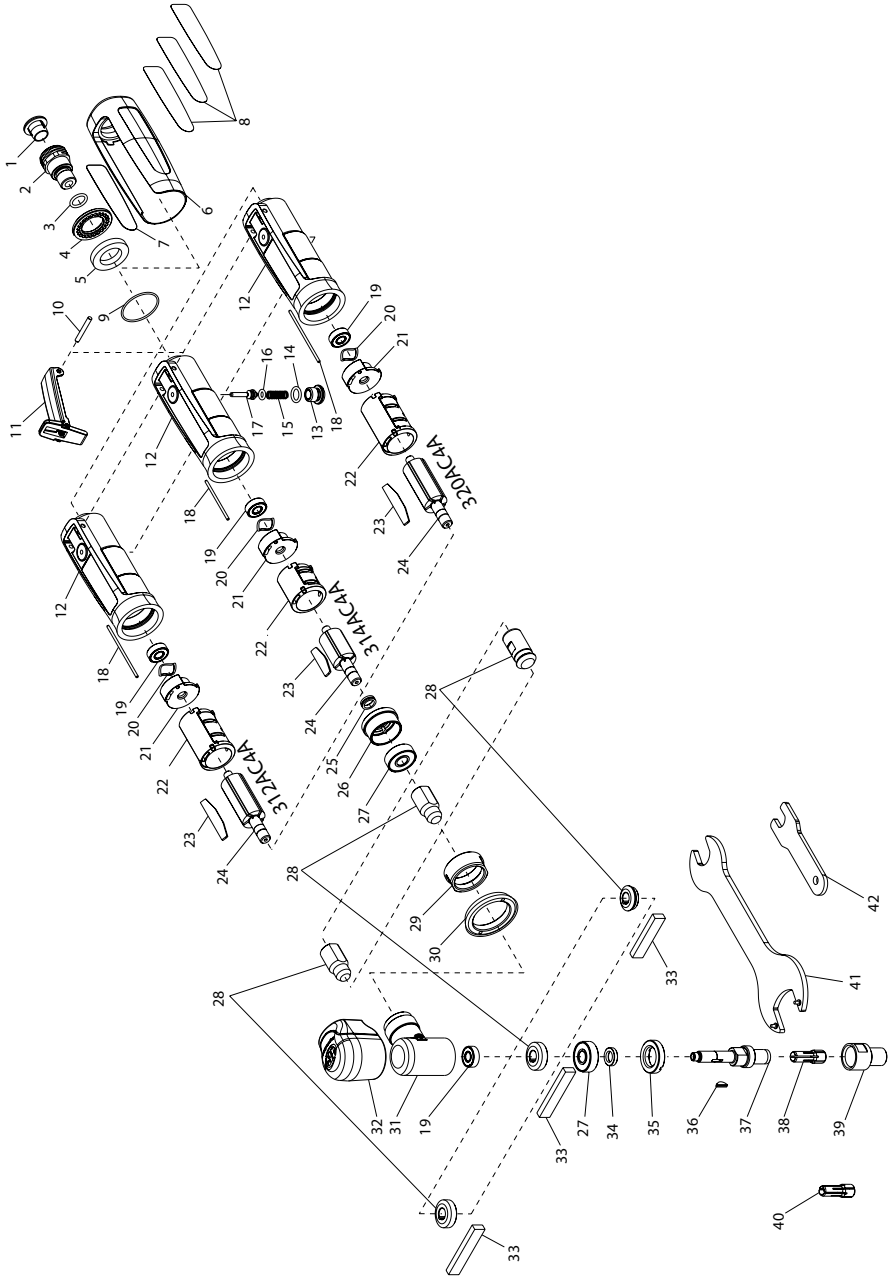


AC4A Angle Air Die Grinder - Exploded View



(Dwg. 45755154)



AC4A Angle Air Die Grinder - Parts List

Item	Description	Part Number	Item	Description	Part Number
1	Plastic Plug	PF-PLUG	22	Cylinder	
2	Inlet Assembly	RG1-A565		for Models 312AC4A and 320AC4A	RG1-3L
*	Inlet Bushing	---		for Model 314AC4A	RG1-3
*	Inlet Screen	---	23	Vane Pack	
3	O-Ring	170-283		for Models 312AC4A and 320AC4A	RG1-42L-5
4	Diffuser	RG1-123		for Model 314AC4A	RG1-42-4
5	Muffler	RG1-311A	24	Rotor	
6	Exterior Sleeve	RG1-747		for Models 312AC4A and 320AC4A	RG1-53L-5
7	Warning Label	RG1-99		for Model 314AC4A	RG1-53-4
8	Nameplate		25	Spacer	RG1-448
	for Model 312AC4A	312AC4A-301	26	Front Endplate	RG1-11A
	for Model 314AC4A	314AC4A-301	27	Bearing (2)	301-24
	for Model 320AC4A	320AC4A-301	28	Gear Pinion Set	
9	O-Ring	RG1-216		for Models 312AC4A and 314AC4A	RG1-A552-2.08
10	Pin	RG1-120	*	Bevel Pinion	---
11	Lever Assembly	RG1-A400	*	Bevel Gear	---
*	Lever	---		for Model 320AC4A	RG1-A552-1.25
*	Lever Lock	---	*	Pinion	---
*	Spring	---	*	Gear	---
*	Roll Pin	---	29	Clamp Nut	RG1-27A
12	Housing Assembly		30	Housing Nut	RG1-306A
	for Models 312AC4A and 320AC4A	RG1-A40-25K	31	Angle Housing Assembly	RG1-A550
	Housing	---	*	Angle Housing	---
	for Model 314AC4A	RG1-A40-30K	*	Grease Fitting	---
*	Housing	---	32	Angle Head Cover	RG1-531
*	Bushing	---	33	Wick	
13	Valve Plug	RG1-266		for Models 312AC4A and 314AC4A	RG1-560-2.08
14	O-Ring	RG1-206		for Model 320AC4A	RG1-560-1.25
15	Spring	RG1-51	34	Spacer	RG1-87
16	Throttle Valve Seal	7811-94	35	Cap	301-531
17	Throttle Valve	RG1-302	36	Pinion Key	301-579
18	Dowel Pin		37	Arbor	RG1-591
	for Models 312AC4A and 320AC4A	RG1-56L	38	Collet, 1/4"	DG110-700-G4
	for Model 314AC4A	RG1-56	39	Collet Nut	AG210-699A
19	Bearing (2)	RG1-22	40	Collet, 6mm	DG110-700-6MM
20	Washer	RG1-278	41	Wrench	RG1-26
21	Rear Endplate	RG1-12	42	Wrench, Small	301-69A

* Not illustrated

Parts and Maintenance

When the life of the tool has expired, it is recommended that the tool be disassembled, degreased and parts be separated by material so that they can be recycled.

Tool repair and maintenance should only be carried out by an authorized Service Center.

Refer all communications to the nearest **Ingersoll Rand** Office or Distributor.

Related Documentation

For additional information refer to:

Air Die Grinder Product Safety Information Manual 04580288

Air Die Grinder Product Information Manual 45760899

Air Die Grinder Product Maintenance Manual 45761848

Manuals can be downloaded from www.ingersollrandproducts.com.

