



Form 16574667
Edition 1
April 2005

Electric Screwdrivers

EL, EP and ET 34V DC Series

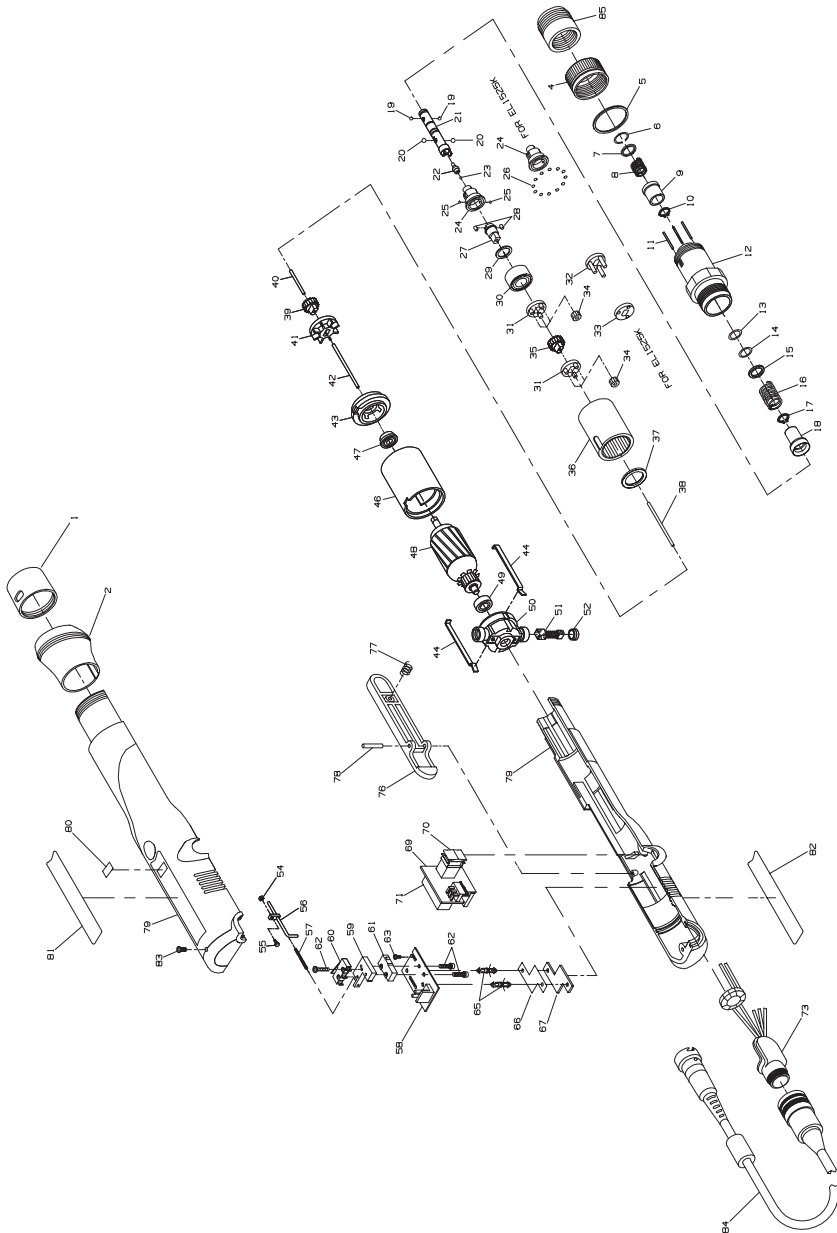
Parts Information



Save These Instructions



EL, EP and ET Electric Screwdriver Exploded Diagram



(Dwg. TPA1528)

EL, EP and ET Electric Screwdriver Parts List

| Item | Part Description | Part Number | Item | Part Description | Part Number |
|------|---|----------------|------|---------------------------------------|-------------|
| 1 | Retainer Coupling | EP4007N-125 | | for ET4011K (6) | EP4007N-10 |
| 2 | Slanted Flange (standard) | EP4007N-124 | | for EL2616K (6) | EP2612N-10 |
| * | Straight Flange (optional) | EP4007N-123 | | for EL1525K (3) | EP1520N-10 |
| 4 | Clutch Adjusting Ring | EP4007N-582 | 35 | Gear Head Pinion Gear | |
| 5 | Indicator Ring | EP4007N-682 | | for EL1512K and EL1525K | EP1510N-17 |
| 6 | Bit Retainer Retaining Ring (Front) (for models ending in K only) | EP4007N-683 | | for ET4011K | EP4007N-17 |
| | | | | for EL2616K | EP2612N-17 |
| 7 | Bit Retainer Collar (for models ending in K only) | EP4007N-585 | 36 | Gear Case | |
| 8 | Bit Retainer Spring (for models ending K only) | EP4007N-931 | | for EL1512K | EP1510N-37 |
| 9 | Bit Retainer Sleeve (for models ending in K only) | EP4007N-930 | | for all others | EP4007N-37 |
| 10 | Bit Retainer Retaining Ring | EP4007N-584 | 37 | Gear Case Shield | EP4007N-207 |
| 11 | Clutch Adjusting Pin (3) | EP4007N-416 | 38 | Clutch Pilot Rod "J" (2.26" long) | EP4007N-435 |
| 12 | Clutch Housing Assembly | | 39 | Fan Pinion Gear | |
| | for models ending in 1S5, 2S3 or 2S5 | ET4007N2S5-580 | | for EL1512K | EP1510N-18 |
| | for all other models | EP4007N-580 | | for ET4011K | EP4007N-18 |
| | | | | for EL2616K | EP2612N-18 |
| 13 | Front Shim | EL4007N-623 | | for EL1525K | EP2603N-18 |
| 14 | Rear Shim | EL4007N-624 | 40 | Fan Pilot Rod "G" (.385" long) | EP4007N-436 |
| 15 | Clutch Spring Plate | EP4007N-623 | 41 | Fan | EP4007N-52 |
| 16 | Clutch Spring | | | for EL1525K | EL1525K-52 |
| | for EL2616K | EP2607N-583 | | for all others | EP4007N-52 |
| | for EL1512K | EP1510N-583 | 42 | Motor Pilot Rod "J" (2.71" long) | EP4007N-437 |
| | for EL1525K | EP1520N-583 | | Motor Assembly | |
| | for ET4011K | EP4007N-583 | | for EL1512K | EP1512K-A53 |
| 17 | Taper Ring Retaining Ring | EP4007N-584 | | for EL1525K | EL1525K-A53 |
| 18 | Taper Ring Assembly | | | for EL2616K and EL4011K | EP2616K-A53 |
| | for EL1525K | EP1520N-588 | 43 | Front End Plate | EP4007N-11 |
| | for EL1512K and EL2616K | EP2607N-588 | 44 | Motor Assembly Spring (2) | EP4007N-98 |
| | for ET4011K | EP4007N-588 | 46 | Field | |
| 19 | Bit Retaining Ball (.094" dia.) (2) (for models ending in K only) | R000B-263 | | for EL1512K | EP2607N-54 |
| | | | | for all others | EP4007N-54 |
| 20 | Pilot Cam Ball (.156" dia.) (2) | 2U-696 | 47 | Front Armature Bearing | EP4007N-24 |
| 21 | Bit Holder Assembly | EP4007N-586 | 48 | Armature | |
| 22 | Pilot | EP4007N-408 | | for EL1512K | EP1512K-53 |
| 23 | Pilot Ball (.062" dia.) | EP4007N-422 | | for EL1525K | EP1525K-53 |
| 24 | Cam Guide | | | for EL2616K and EL4011K | EP2616K-53 |
| | for EL1525K | EP1520N-681 | 49 | Rear Armature Bearing | EP4007N-22 |
| | for all others | EP4007N-681 | 50 | Rear End Plate | EP1512K-12 |
| 25 | Cam Guide Ball (.156" dia.) (2) | 2U-696 | 51 | Brush Assembly (includes 10 pieces) | EP1512K-BP |
| 26 | Cam Guide Bearing Ball (23) (.078" dia.) | | 52 | Brush Cap (2) | EP4007N-25 |
| | for EL1525K | EL1520N-510 | 54 | Adjusting Screw Nut | EP4007N-593 |
| 27 | Cam | | 55 | Pilot Rod Adjusting Screw | EP4007N-592 |
| | for ET4011K | EP4007N-581 | 56 | Pilot Rod "D" | EP4007N-438 |
| | for all others | EP1510N-581 | 57 | Pilot Rod Spring | EP4007N-595 |
| 28 | Cam Roller (2) | EP4007N-587 | 58 | Microswitch Circuit Board | ET4007N-220 |
| 29 | Spindle Washer | | 59 | Switch Plate | ET4007N-221 |
| | for EL1525K | EP1520N-509 | 60 | Shut-off Switch | EP4007N-223 |
| | for all others | EP4007N-509 | 61 | Start Switch | ET4007N-222 |
| 30 | Spindle Bearing | EP4007N-510 | 62 | Switch Screw (12mm) (4) | EP4007N-224 |
| 31 | Spindle/Gear Head (2) | | 63 | Switch Base Screw (5mm) (2) | EP4007N-226 |
| | for EL1512K | EP2607N-216 | * | Wire Assembly | EP1512K-45 |
| | for EL2616K | EP2612N-216 | 65 | Switch Base Spacer (2) | EP4007N-225 |
| | for ET4011K | EP4007N-216 | 66 | Insulating Film | EP4007N-227 |
| 32 | Gear Head (for EL1525K) | EP1520N-216 | 67 | Brush Light Circuit Board | EP1512K-228 |
| 33 | Gear Head Spacer (for EL1525K) | EP1520N-108 | | Reverse Switch Circuit Board Assembly | E4011K-A229 |
| 34 | Planet Gear | | 69 | Reverse Switch Circuit Board | EP4004E-229 |
| | for EL1512K (6) | EP1510N-10 | 70 | Reverse Switch | EP4007N-329 |

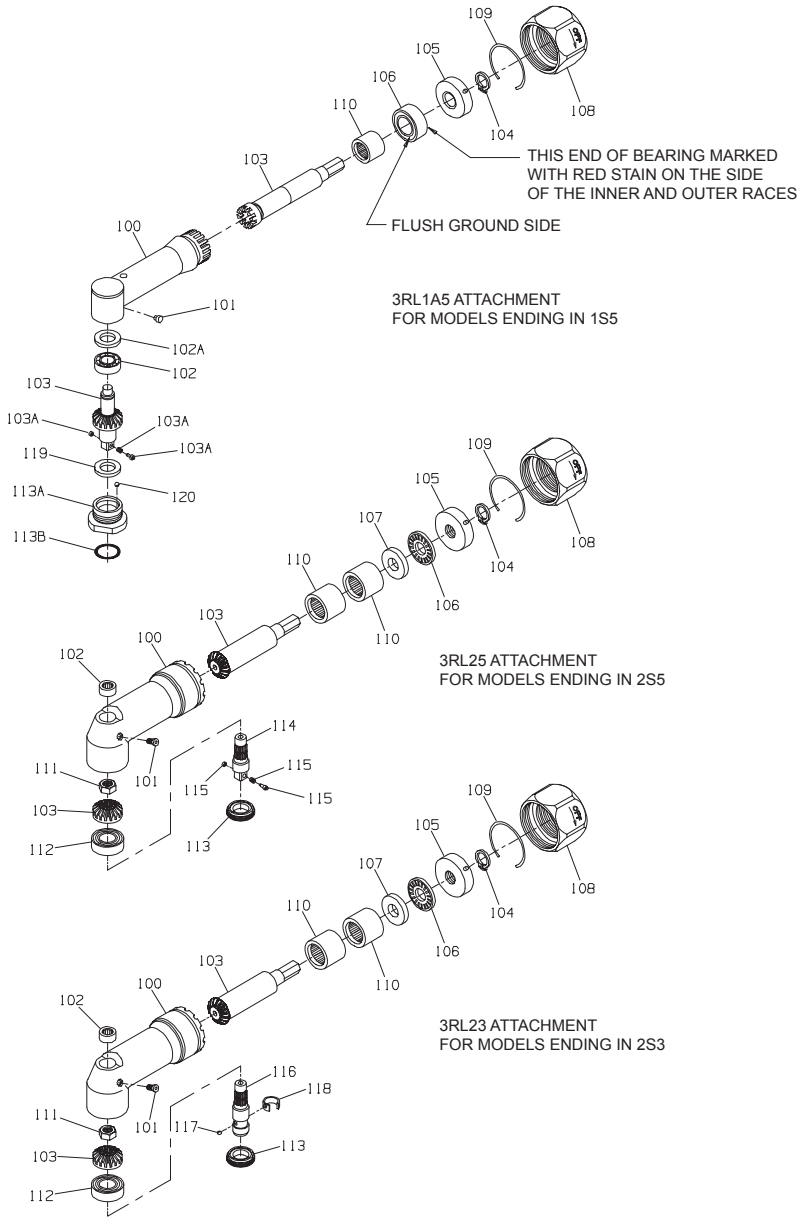
* Not illustrated.

EL, EP and ET Electric Screwdriver Parts List

| Item | Part Description | Part Number | Item | Part Description | Part Number |
|------|-------------------------------|-------------|------|--|----------------|
| * | Reverse Switch Rocker | EP4007N-330 | 84 | Power Cord | EP1512K-239 |
| 71 | Capacitor | EP4007N-230 | 85 | Angle Head Coupling (for models ending in 1S5, 2S3 or 2S5 only) | EL4007N2S5-AHC |
| 73 | Receptacle Assembly | EP1512K-44 | | | |
| 75A | Housing Assembly | | * | Microswitch Adjusting Wrench Package | ES60T-MSW |
| | for EL1512K | EL1512K-A40 | * | Pistol Grip Assembly | EP4007N-48 |
| | for EL2616K | EL2616K-A40 | * | Switch Adjustment Gauge (for high torque models) | EP1510N-SG |
| | for ET4011K | EL4011K-A40 | * | Gear Case Jig (for high torque models) | EP1510N-J37 |
| | for EL1525K | EL1525K-A40 | * | Hardware Package (includes illustrated items 6, 10, 17, 19[2], 44[2], 52[2], 54, 55, 62[4], 63[2], 66 and 83 | EL4007N-HP |
| 76 | Throttle Lever | EL4007N-273 | * | Maintenance Label | EP4007N-302 |
| 77 | Throttle Spring | EL4007N-274 | | | |
| 78 | Throttle Lever Pin | EL4007N-275 | | | |
| 80 | Brush Light Cover | EP4007N-45 | | | |
| 81 | Nameplate | | * | English | EP4007N-302 |
| | for EL1512K | EL1512K-301 | | French | EP4007N-302F |
| | for EL2616K | EL2616K-301 | | German | EP4007N-302G |
| | for ET4011K | EL4011K-301 | | Spanish | EP4007N-302S |
| | for EL1525K | EL1525K-301 | | Italian | EP4007N-302I |
| 82 | Warning Label | EP4004E-99 | * | Extension Cord (2 m.l.) | EC29-249-2 |
| 83 | Housing Screw (package of 10) | EP4007N-41 | | | |

* Not illustrated.

EL, EP and ET Angle Attachments Exploded Diagram



(Dwg. TPA1514)

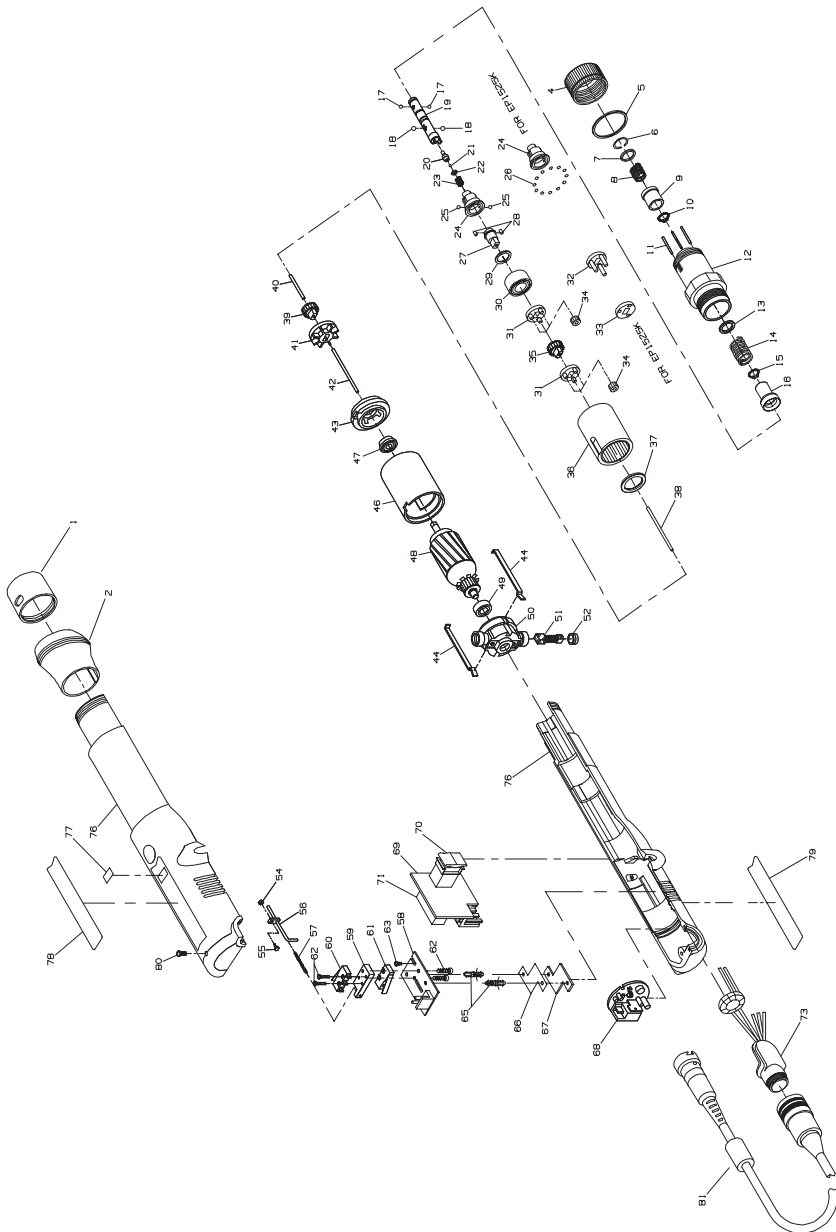
EL, EP and ET Angle Attachments Parts List

| Item | Part Description | For Models Ending in 1S5 | For Models Ending in 2S3 | For Models Ending in 2S5 |
|------|---|--------------------------|--------------------------|--------------------------|
| | Angle Attachment | 3RL1A5 | 3RL23 | 3RL25 |
| 100 | Angle Housing Assembly | 3RL1A-A550 | 3RL2-A550 | 3RL2-A550 |
| 101 | Grease Fitting | D0F9-879 | D059-879 | D0F9-879 |
| 102 | Spindle Upper Bearing | --- | 120A4-603 | 120A4-603 |
| 102 | Spindle Upper Bearing | 7L1A-603 | --- | --- |
| 102A | Shim Packet | 7L1A-P448 | --- | --- |
| 103 | Matched Gear Set (Bevel Gear and Pinion not sold separately) | 3RL1A5-A591 | 3RL2-A552 | 3RL2-A552 |
| 103A | Socket Retainer Assembly (consists of Plunger, Spring and Washer) | 500B-816A | --- | --- |
| 104 | Thrust Bearing Retainer | 3RL2-705 | 3RL2-705 | 3RL2-705 |
| 105 | Rear Thrust Bearing Seal | 3RL2-682 | 3RL2-682 | 3RL2-682 |
| 106 | Bevel Pinion Thrust Bearing | 3RL1A-514 | 3RL2-105 | 3RL2-105 |
| 107 | Front Thrust Bearing Seat | --- | 3RL2-683 | 3RL2-683 |
| 108 | Coupling Nut | 3RL2-27 | 3RL2-27 | 3RL2-27 |
| 109 | Coupling Nut Retainer | 3RL2-29 | 3RL2-29 | 3RL2-29 |
| 110 | Bevel Pinion Bearing (2 for 3RL23) and 3RL25; 1 for 3RL1A5 | 7AH-24 | H54U-511B | H54U-511B |
| 111 | Bevel Gear Retainer Nut | --- | 120A4-578 | 120A4-578 |
| 112 | Spindle Lower Bearing | --- | 120A4-593 | 120A4-593 |
| 113 | Angle Housing Cap | --- | 120A4-531 | 120A4-531 |
| 113A | Angle Housing Cap Assembly | 3RL1A-A531 | --- | --- |
| 113B | Angle Housing Cap Seal | 3RL1A-513 | --- | --- |
| 114 | 1/4" Square Drive Spindle Assembly | --- | --- | 141A9-607-1/4 |
| †115 | Socket Retainer (consists of Plunger Spring and Washer) | --- | --- | 500B-816A |
| 116 | 1/4" Hex Bit Holder Spindle Assembly (for standard bits) | --- | 5L2C3-B586 | --- |
| 117 | Bit Retaining Ball (.125" diameter) | --- | AV1-225 | --- |
| 118 | Bit Retaining Spring | --- | 102A60-241 | --- |
| 119 | Ball Race | 3RL1A-532 | --- | --- |
| 120 | Steel Ball (1/6" diameter) (20) | 3RL1A-512 | --- | --- |
| * | Housing Cap Wrench | --- | 141A12-26 | 141A12-26 |

* Not illustrated.

† To keep downtime to a minimum, it is desirable to have on hand certain repair parts. We recommend that you stock one (pair or set) of each part indicated by a (†) for every four tools in service.

EL, EP and ET Electric Screwdriver Exploded Diagram



(Dwg. TPA1529)

EL, EP and ET Electric Screwdriver Parts List

| Item | Part Description | Part Number | Item | Part Description | Part Number |
|------|---|-------------|------|-------------------------------------|-------------|
| 1 | Retainer Coupling | EP4007N-125 | | for EP4011K | EP4007N-10 |
| 2 | Slanted Flange (standard) | EP4007N-124 | | for EP1525K (3) | EP1520N-10 |
| * | Straight Flange (optional) | EP4007N-123 | 35 | Gear Head Pinion Gear | |
| 4 | Clutch Adjusting Ring | EP4007N-582 | | for EP1512K and EP1525K | EP1510N-17 |
| 5 | Indicator Ring | EP4007N-682 | | for EP4011K | EP4007N-17 |
| 6 | Bit Retainer Retaining Ring (Front) | EP4007N-683 | | for EP2616K | EP2612N-17 |
| 7 | Bit Retainer Collar | EP4007N-585 | 36 | Gear Case | |
| 8 | Bit Retainer Spring | EP4007N-931 | | for EP1512K | EP1510N-37 |
| 9 | Bit Retainer Sleeve | EP4007N-930 | | for all others | EP4007N-37 |
| 10 | Bit Retainer Retaining Ring | EP4007N-584 | 37 | Gear Case Shield | EP4007N-207 |
| 11 | Clutch Adjusting Pin (3) | EP4007N-416 | 38 | Clutch Pilot Rod "I" (2.26" long) | EP4007N-435 |
| 12 | Clutch Housing Assembly | EP4007N-580 | 39 | Fan Pinion Gear | |
| 13 | Clutch Spring Plate | EP4007N-623 | | for EP1512K | EP1510N-18 |
| 14 | Clutch Spring | | | for EP4011K | EP4007N-18 |
| | for EP4011K | EP4007N-583 | | for EP2616K | EP2612N-18 |
| | for EP2616K | EP2607N-583 | | for EP1525K | EP2603N-18 |
| | for EP1525K | EP1520N-583 | 40 | Fan Pilot Rod "G" (.385" long) | EP4007N-436 |
| | for EP1512K | EP4007N-583 | 41 | Fan | EP4007N-52 |
| 15 | Taper Ring Retaining Ring | EP4007N-584 | | for EP1525K | EL1525K-52 |
| 16 | Taper Ring Assembly | | | for all others | EP4007N-52 |
| | for EP4011K | EP4007N-588 | 42 | Motor Pilot Rod "J" (2.71" long) | EP4007N-437 |
| | for EP1525K | EP1520N-588 | | Motor Assembly | |
| | for EP2616K and EP1512K | EP2607N-588 | | for EP1512K | EP1512K-A53 |
| 17 | Bit Retaining Ball (.094" dia.) (2) | R000B-263 | | for EP1525K | EP1525K-A53 |
| 18 | Pilot Cam Ball (2) (.156" dia.) (4) | 2U-696 | | for all others | EP2616K-A53 |
| 19 | Bit Holder Assembly | EP4007N-586 | 43 | Front End Plate | EP4007N-11 |
| 20 | Pilot | EP4007N-408 | 44 | Motor Assembly Spring (2) | EP4007N-98 |
| 21 | Pilot Ball (.062" dia.) | EP4007N-422 | 46 | Field | |
| 22 | Pilot Push Spring Washer | EP4007N-421 | | for EP1512K | EP2607N-54 |
| 23 | Pilot Push Spring | EP4007N-420 | | for all others | EP4007N-54 |
| 24 | Cam Guide | | 47 | Front Armature Bearing | EP4007N-24 |
| | for EP1525K | EP1520N-681 | 48 | Armature | |
| | for all others | EP4007N-681 | | for EP1512K | EP1512K-53 |
| 25 | Cam Guide Ball (2) (.156" dia.) | 2U-696 | | for EP1525K | EP1525K-53 |
| 26 | Cam Guide Bearing Ball (23) (for EP1525K) | EP1520N-510 | | for EP2616K and EP4011K | EP2616K-53 |
| 27 | Cam | | 49 | Rear Armature Bearing | EP4007N-22 |
| | for EP4011K | EP4007N-581 | 50 | Rear End Plate | EP4007N-12 |
| | for all others | EP1510N-581 | 51 | Brush Assembly (includes 10 pieces) | EP1512K-BP |
| 28 | Cam Roller (2) | EP4007N-587 | 52 | Brush Cap (2) | EP4007N-25 |
| 29 | Spindle Washer | | 54 | Adjusting Screw Nut | EP4007N-593 |
| | for EP1525K | EP1520N-509 | 55 | Pilot Rod Adjusting Screw | EP4007N-592 |
| | for all others | EP4007N-509 | 56 | Switch Pilot Rod "D" | EP4007N-438 |
| 30 | Spindle Bearing | EP4007N-510 | 57 | Pilot Rod Spring | EP4007N-595 |
| 31 | Spindle/Gear Head (2) | | 58 | Microswitch Circuit Board | EP4007N-220 |
| | for EP1512K | EP2607N-216 | 59 | Switch Plate | EP4007N-221 |
| | for EP2616K | EP2612N-216 | 60 | Shut-off Switch | EP4007N-223 |
| | for EP4011K | EP4007N-216 | 61 | Start Switch | EP4007N-222 |
| 32 | Gear Head (for EP1525K) | EP1520N-216 | 62 | Switch Screw (12 mm) (4) | EP4007N-224 |
| 33 | Gear Head Spacer (for EP1525K) | EP1520N-108 | 63 | Switch Base Screw (5 mm) (2) | EP4007N-226 |
| 34 | Planet Gear | | * | Wire Assembly | EP1512K-45 |
| | for EP1512K | EP1510N-10 | 65 | Switch Base Spacer (2) | EP4007N-225 |
| | for EP26016K | EP2612N-10 | 66 | Insulating Film | EP4007N-227 |

* Not illustrated.

EL, EP and ET Electric Screwdriver Parts List

| Item | Part Description | Part Number | Item | Part Description | Part Number |
|------|---------------------------------------|--------------|------|---|--------------|
| 67 | Brush Light Circuit Board | EP1512K-228 | 79 | Warning Label | EP4004E-99 |
| | Reverse Switch Circuit Board Assembly | EP4011K-A229 | 80 | Housing Screw (package of 10) | EP4007N-41 |
| 69 | Reverse Switch Circuit Board | EP4004E-229 | 81 | Power Cord | EP1512K-239 |
| 70 | Reverse Switch | EP4007N-329 | * | Microswitch Adjusting Wrench Package | ES60T-MSW |
| 71 | Capacitor | EP4007N-230 | * | Pistol Grip Assembly | EP4007N-48 |
| 73 | Receptacle Assembly | EP1512K-44 | * | Extension Cord | EC29-249-2 |
| | Housing Assembly | | * | Switch Adjustment Gauge (for high torque models) | EP1510N-SG |
| | for EP1512K | EP1512K-A40 | | | |
| | for EP2616K | EP2612K-A40 | | Gear Case Jig (for high torque models) | EP1510N-J37 |
| | for EP4011K | EP4011K-A40 | * | Hardware Package (includes illustrated items 6, 10, 15, 17 [2], 44 [2], 52 [2], 54, 55, 62 [4], 63 [2], 66 and 80 | |
| | for EP1525K | EP1525K-A40 | | | |
| 76 | Housing Package | EP4007N-40 | | | EP4007N-HP |
| 77 | Brush Light Cover | EP4007N-45 | * | Maintenance Label | |
| 78 | Nameplate | | | English | EP4007N-302 |
| | for EP1512K | EP1512K-301 | | French | EP4007N-302F |
| | for EP2616K | EP2616K-301 | | German | EP4007N-302G |
| | for EP4011K | EP4016K-301 | | Spanish | EP4007N-302S |
| | for EP1525K | EP1525K-301 | | Italian | EP4007N-302I |

* Not illustrated.

Parts and Maintenance

When the life of the tool has expired, it is recommended that the tool be disassembled, degreased and parts be separated by material so that they can be recycled.

Tool repair and maintenance should only be carried out by an authorized Service Center. Refer all communications to the nearest **Ingersoll-Rand** Office or Distributor.

Related Documentation

For additional information refer to:
 Electric Screwdrivers Product Safety Information Manual 16573685.
 Electric Screwdrivers Product Information Manual 16578676.
 Elec Screwdrivers Maintenance Information Manual 16575334.

Manuals can be downloaded from www.irttools.com.

Notes

Notes



www.irtools.com

© 2005 Ingersoll-Rand Company