



QX Series™ Cordless Torque Multiplier



REAL TOOLS FOR REAL WORK.™

Next-Generation Productivity.

The innovative QX Series Cordless Torque Multiplier will reduce your assembly time and cost, while ensuring repeatable accuracy for all torque-critical joints. Designed with a premium gearbox and an efficient, time-tested closed-loop transducer, this tool will fasten the bolt, validate, and record each result, managing your total operation.

NOT JUST TORQUE CONTROL BUT *TOTAL* CONTROL.

Accuracy:

- Ingersoll Rand's closed-loop transducer control at the heart of the tool delivers precise torque and accurate, traceable results—it's precision where you need it most

Control:

- A multi-function display module allowing for quick setup and feedback on every QX Series™ tool
- User-programmable configurations such as torque, angle and gang count that reduce the number of tools needed for multiple applications

Comfort:

- Cordless and compact, the QX Series™ Torque Multiplier allows operators to move freely without the need of bulky air or hydraulic hoses, compressors, generators or powerpacks
- Tethering points to safely secure the tools

Communication:

- USB standard, wireless communication optional
- Data management, process control and the ability to adjust tool configurations (Ethernet, fieldbus and I/O capable)

Versatility:

- Fast programming that makes the tool adaptable to multiple applications
- Cordless and portable to allow operators to move freely around any workplace or environment

QX Series™ Torque Multiplier
1000NM Pistol



Adaptable to Your Application.



From pipeline flange bolts to truck frame assembly, the QX Series™ Cordless Torque Multiplier has the range, accuracy and configurations to tackle your bolting needs. Sharing the same IQV Series™ power platform with our industrial cordless and QX Series™ assembly tools, the Torque Multiplier expands our broad range of cordless bolting solutions.

Oil and Gas



- Flanges
- Heat Exchanges
- High Pressure Valves

Infrastructure



- Bridges
- Road Ways
- Steel Structures

Heavy Equipment



- Excavators
- Diesel and Gas Engines
- Construction/Truck

Wind



- Foundation Bolts
- Gearboxes
- General Maintenance

Rail



- Rail Car Maintenance
- Locomotive Assembly
- Infrastructure Installation/Maintenance

Power Gen



- Turbines
- Valves Connections and Flanges
- Generators



Precision Engineered.



Closed-loop transducer control delivers precise torque and accurate, traceable results

Premium gearbox provides proven quality and accuracy

Optional wireless communications for process control with I/O and data collection

USB port for convenient programming and data transfer

Standard or custom reaction arms meet multiple application needs

Proven QX Series™ brushless motor provides maximum durability

Non-contacting trigger and reverse switch maximizes durability

360° adjustable handle provides operator comfort and flexibility when working on multiple joints and applications (includes 6 mm threaded port for eye hooks or other tethering points)

Ergonomic design comfortable, lightweight and balanced

Cycle status lights and audible alarm provide instant validation during each operation
Red – Above set high limit
Yellow – Below set low limit
Green – Within set range
Blue – Active alarm condition

Lithium Ion battery provides maximum run time and portability using power platform common to all Ingersoll Rand cordless families



Backlit display offers quick set-up and easy to read visual feedback

High strength, impact resistant lens guards against damage

Superior Communication and Control.

Ingersoll Rand doesn't just give you unprecedented technology, we give you total control of that technology. With up to eight programmable configurations per tool, the QX Series™ Torque Multiplier allows operators to transition seamlessly between different bolting applications. You'll be able to use bolting strategies individually, or combined in one strategy depending on what works best for you.

Common Bolting Strategies

Torque



Achieve desired torque within high and low limits

Angle



Achieve target rotation within high and low limits

Gang Count



Counts all rundowns to ensure all bolts have been fastened

+ If additional control is needed, Ingersoll Rand's ICS software gives you even more options to adapt to the most complicated bolting applications.

Advanced Communication Options for Process Control and Real-Time Monitoring



(PCM)





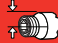





When not using the wireless networking option, QX Series™ Torque Multiplier tools can communicate with a computer via USB port.

Process Communication Module (PCM) Features

		IC-PCM-2-EU
Main Power Cord	84737-A499-PCM-5V (supplied) 100-240V AC input - 5V DC output	
Tool Connections	Wireless tool connections	Up to 10
Software	ICS Connect software	•
Communication	Ethernet to ICS	•
Fieldbus Options	Ethernet/IP, DeviceNet, Interbus-S, Profibus, Modbus-TCP, Profinet	•
Protocols	Open Protocol, Ethernet and Serial EOR, ToolsNet and others	•
Printers/Devices	Serial RS232, bar code, label printing	•
I/O	8 inputs/8 outputs, with behavior assignable through ICS software, operates at 24V DC	•
Indicators	Power ON, System Ready, Wireless Activity, Ethernet Activity	•
Ambient Operating Conditions	0-50°C, 20/90% non-condensing humidity	•
Enclosure	IP52 mounted in upright vertical position	•
System Weight	1.4 kg	•
Overall Dimensions	291 mm x 103 mm x 210 mm	•
Compatible with	QXX series	•
CCN	24119638	•

QX Series™ Specifications

	 Nm	 rpm	 kg*	 mm*	 mm	 in	 v	 Communication
QX Series™ Pistol								
QXC2PT200NPS12	40-200	45	3.8	373	56	3/4"	20V	Via USB Cable Only
QXC2PT500NPS12	100-500	18	3.8	373	56	3/4"	20V	Via USB Cable Only
QXC2PT1000NPS12	200-1,000	9	6.5	419	80	3/4"	20V	Via USB Cable Only
QXC2PT1350NPS16	270-1,350	7	6.5	419	80	1"	20V	Via USB Cable Only
QXC2PT2000NPS16	400-2,000	5	6.8	452	80	1"	20V	Via USB Cable Only
QXX2PT200NPS12	40-200	45	3.8	373	56	3/4"	20V	Wireless Enabled
QXX2PT500NPS12	100-500	18	3.8	373	56	3/4"	20V	Wireless Enabled
QXX2PT1000NPS12	200-1,000	9	6.5	419	80	3/4"	20V	Wireless Enabled
QXX2PT1350NPS16	270-1,350	7	6.5	419	80	1"	20V	Wireless Enabled
QXX2PT2000NPS16	400-2,000	5	6.8	452	80	1"	20V	Wireless Enabled
QX Series™ Pistol Kit**								
QXC2P200S12K2EU	40-200	45	3.8	373	56	3/4"	20V	Via USB Cable Only
QXC2P500S12K2EU	100-500	18	3.8	373	56	3/4"	20V	Via USB Cable Only
QXC2P1000S12K2EU	200-1,000	9	6.5	419	80	3/4"	20V	Via USB Cable Only
QXC2P1350S16K2EU	270-1,350	7	6.5	419	80	1"	20V	Via USB Cable Only
QXC2P2000S16K2EU	400-2,000	5	6.8	452	80	1"	20V	Via USB Cable Only
QXX2P200PS12K2EU	40-200	45	3.8	373	56	3/4"	20V	Wireless Enabled
QXX2P500PS12K2EU	100-500	18	3.8	373	56	3/4"	20V	Wireless Enabled
QXX2P1000PS12K2EU	200-1,000	9	6.5	419	80	3/4"	20V	Wireless Enabled
QXX2P1350PS16K2EU	270-1,350	7	6.5	419	80	1"	20V	Wireless Enabled
QXX2P2000PS16K2EU	400-2,000	5	6.8	452	80	1"	20V	Wireless Enabled

*Weight and length do not include battery. Battery sold separately. *Include (1) tool, (1) standard reaction bar, (1) auxiliary handle



40-200Nm
100-500Nm



200-1,000Nm
270-1,350Nm



400-2,000Nm

QX Series™ Torque Multiplier Kit



**Kit includes (1) tool, (2) BL2022 5.0 Ah batteries, (1) BC1121-EU charger and (1) tool bag. Hard case available as a separate option.

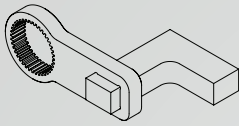
QX Series™ Angle Torque Multiplier on request



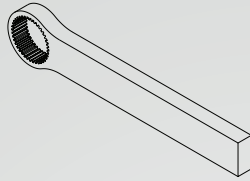
Ingersoll Rand offers custom Angle Torque Multiplier tools within the torque range from 16 to 2000Nm. Please contact your sales representative for more details.

Reaction Arms

Ingersoll Rand offers the following variety of reaction arms for different applications. Reaction arms are available in both 52 mm and 72 mm spline drives, depending on the size of the gearbox.



Cranked, 45 or 90 degrees



Straight, aluminum or steel (multiple lengths available)

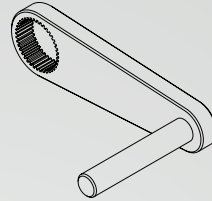
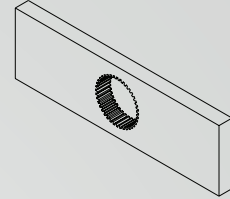
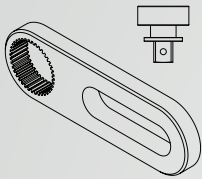


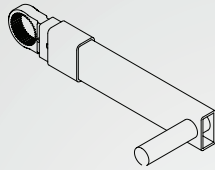
Plate and pin (multiple lengths available)



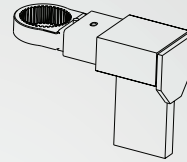
Double-sided



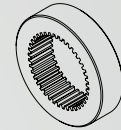
Sliding slave kit (multiple lengths available)



Sliding peg and yoke assembly (multiple lengths available)



Sliding yoke, paddle and yoke assembly (multiple lengths available)



Blank welding ring

Custom Reaction Arm Options

Not all applications are equal — Ingersoll Rand offers custom reaction arms. Please contact your local sales representative for more details.

Power Platform

All QX Series™ 20V tools are compatible with both the 2.5 Ahr and 5.0 Ahr batteries. The 5.0 Ahr is optimum for longer use applications while the 2.5 Ahr is ideal for tighter spaces and reduced weight.

IQV20 Series
Charger 20V
BC1121-EU



IQV20 Series™ Lithium Ion
Battery Pack 20V, 5.0 Ahr
BL2022



IQV20 Series™ Lithium Ion
Battery Pack 20V, 2.5 Ahr
BL2012



BL2022 Battery Boot
BL2010-BOOT



BL2012 Battery Boot
BL2005-BOOT



Accessories



Torque Analyser



Spring Balancer



Process Communication
Module (PCM)



Hard Case



3/4" and 1" Socket Kits



Ingersoll Rand (NYSE:IR) advances the quality of life by creating comfortable, sustainable and efficient environments. Our people and our family of brands—including Club Car®, Ingersoll Rand®, Thermo King® and Trane®—work together to enhance the quality and comfort of air in homes and buildings; transport and protect food and perishables; and increase industrial productivity and efficiency. We are a \$13 billion global business committed to a world of sustainable progress and enduring results.



www.ingersollrandproducts.com

Ingersoll Rand, IR, the IR logo, QX Series and the QX Series logo are trademarks of Ingersoll Rand, its subsidiaries and/or affiliates. All other trademarks are the property of their respective owners.

Nothing contained on these pages is intended to extend any warranty or representation, expressed or implied, regarding the product described herein. Any such warranties or other terms and conditions of sale of products shall be in accordance with Ingersoll Rand's standard terms and conditions of sale for such products, which are available upon request.

Product improvement is a continuing goal at Ingersoll Rand. Designs and specifications are subject to change without notice or obligation.