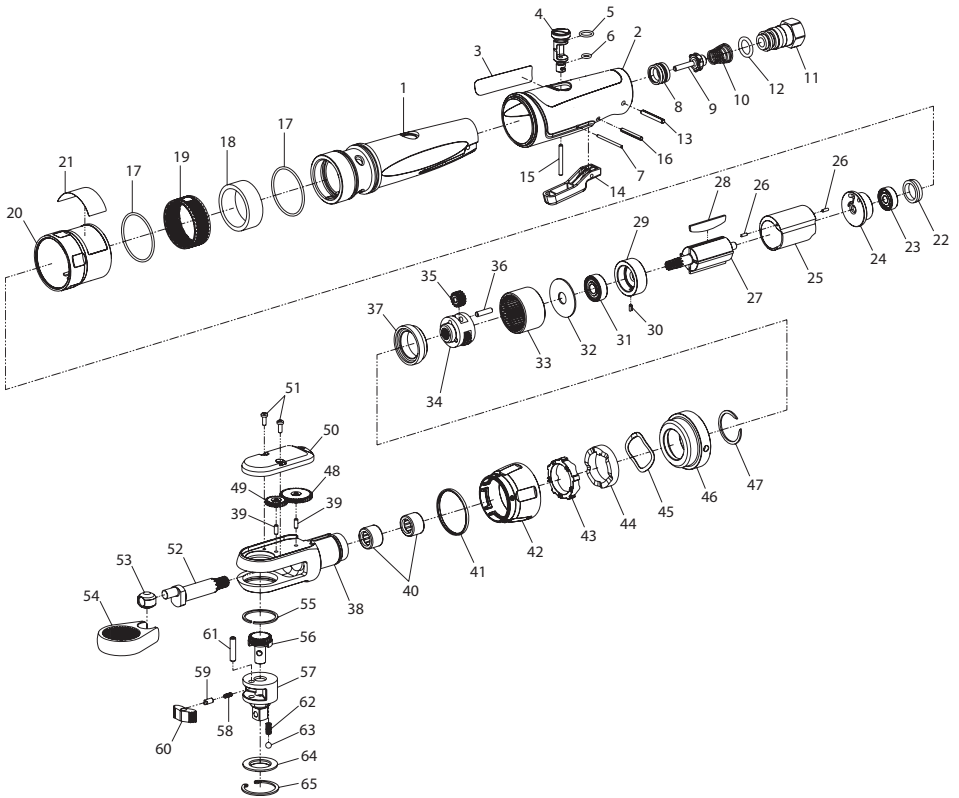


# 1207MAX Series Air Ratchet Wrench - Exploded View



(Dwg. 45653425)

## 1207MAX Series Air Ratchet Wrench - Parts List

Item	Part Description	Part Number	Item	Part Description	Part Number
	Housing Assembly			Ratchet Housing Assembly	1207-A322
	for 1207MAX-D3	1207MAX-D3-A40	38	Ratchet Housing	---
	for 1207MAX-D4	1207MAX-D4-A40	39	Gear Pins (2)	---
1	Housing	---	40	Crankshaft Needle Bearings (2)	---
	Composite Housing Assembly			Reversing Collar Kit	1207-K127
	for 1207MAX-D3	1207MAX-D3-A747	41	Ring	---
	for 1207MAX-D4	1207MAX-D4-A747	42	Collar	---
2	Composite Housing	---	43	Indexer	---
3	Nameplate Label	---	44	Cam	---
	for 1207MAX-D3	1207MAX-D3-301	45	Spring	---
	for 1207MAX-D4	1207MAX-D4-301	46	Coupling Nut	1207-27
	Valve Kit	1207-VK	47	Retaining Ring	1207-118
4	Power Regulator	1207-200		Reversing Gear Kit	1207-K82
5	Regulator O-Ring (top)	---	48	Gear (large)	1207-82
6	Regulator O-Ring (bottom)	---	49	Gear (small)	1207-81
7	Regulator Retaining Pin	---	50	Cover	---
8	Throttle Valve Seat	131-303	51	Screw (2)	---
9	Throttle Valve	131-50	52	Crankshaft	1207-35
10	Throttle Valve Spring	1207-51	53	Drive Bushing	170-36
	Inlet Bushing Assembly	1207-A565	54	Yoke	1207-37
11	Inlet Bushing	---		Ratchet Head Kit	
12	Inlet Bushing O-Ring	---		for 1207MAX-D3	1207-D3-TRK1
13	Inlet Bushing Retaining Pin	---		for 1207MAX-D4	1207-D4-TRK1
	Throttle Lever Kit	1207-LK	55	Friction Ring	109XPA-427
14	Throttle Lever	---	56	Reverse Button	1207-38
15	Throttle Plunger	---	57	Anvil Assembly	
16	Throttle Lever Retaining Pin	---		for 1207MAX-D3	109XPA-D44
17	Housing O-Ring	107XPA-367		for 1207MAX-D4	1099XPA-D44
	Muffler Kit	1207-K311		Pawl Kit	109XPA-K43
18	Muffler	---	58	Lock Spring	---
19	Muffler Screen	---	59	Lock Pin	---
	Exhaust Deflector Assembly	1207-A123	60	Pawl	---
20	Exhaust Deflector	---	61	Pawl Retaining Pin	---
21	Warning Label	WARNING-34-99		Spring Kit	109XPA-SK
	Motor Assembly	1207-MK	62	Friction Spring (3 per kit)	---
22	End Cap	1207-207	63	Friction Ball (3 per kit)	---
23	Rear Rotor Bearing	170-97	64	Thrust Washer	---
24	Rear End Plate	170-12	65	Retaining Ring	---
25	Cylinder	170-3		* Oil - Ingersoll Rand No. 10 (4 oz. bottle)	10Z4
26	Motor Alignment Pins (2)	---		* Grease	
27	Rotor	1207-53		IR # 67 (1 lb can) - for Gearing	67-1 LB
28	Vanes (set of 4)	170-42-4		IR # 67 (8 lb can) - for Gearing	67 8 LB
29	Front End Plate	1207-11		IR # 70 (1 lb can) - for Ratchet Head	70 1 LB
30	Motor Alignment Pin	---		IR # 70 (8 lb can) - for Ratchet Head	70 8 LB
31	Front Rotor Bearing	308A-22		* Spline Wrench (for removal of item 33)	170-SW
32	Spacer	1207-18		* Coupling Nut Wrench (for removal of item 46)	1105-CW
	Gearing Kit	1207-GK		* Handle Clamp Tool	1207-598
33	Internal Gear	170-625			
34	Spindle	1207-8			
35	Planet Gear (3 per kit)	170-9			
36	Planet Gear Pin (3 per kit)	1207-524			
37	Spacer	1207-80			

\* Not Illustrated.

## Parts and Maintenance

When the life of the tool has expired, it is recommended that the tool be disassembled, degreased and parts be separated by material so that they can be recycled.

Tool repair and maintenance should only be carried out by an authorized Service Center.

Refer all communications to the nearest **Ingersoll Rand** Office or Distributor.

## Related Documentation

For additional information refer to:

Air Ratchet Wrench Safety Information Manual 04580361

Air Ratchet Wrench Product Information Manual 45657244.

Manuals can be downloaded from [ingersollrandproducts.com](http://ingersollrandproducts.com).



ingersollrandproducts.com  
© 2014 Ingersoll Rand

**45657269**  
Edition 3  
January 2014