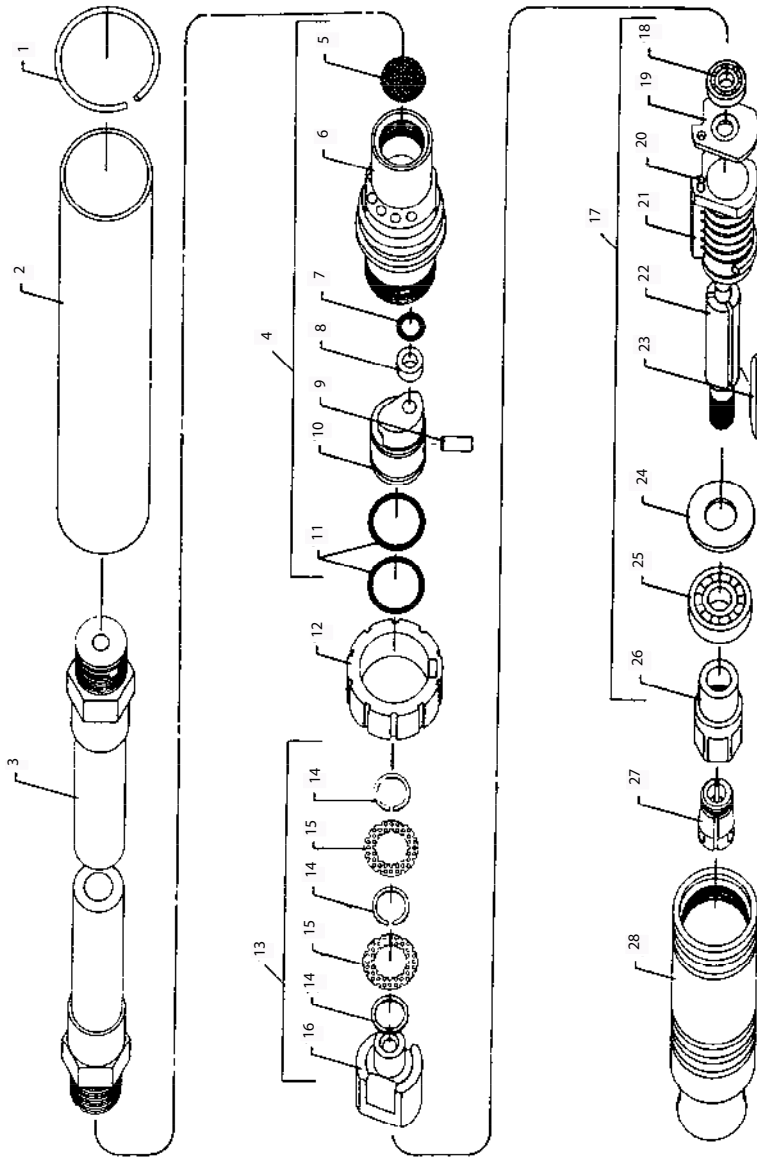


DG600G2 Air Pencil Grinder - Exploded View



(Dwg. TPT-1018)



DG600G2 Air Pencil Grinder - Parts List

Item	Part Description	Part Number	Item	Part Description	Part Number
1	Snap Ring	37272	27	Insert	
2	Exhaust Sleeve	47571-1-F		1/8" capacity	47568-1
3	Hose Assembly	39907-7		3 mm capacity	47568-2
4	Valve Assembly	47574	28	Motor Housing	
5	Screen	47577		for standard models	4562187
6	Valve Body	47569		for "EU" models	4613733
7	O-Ring	47615	*	Sleeve	47550
8	Bushing	47572	*	Warning Labels	
9	Plug	31637		for standard models	48176-1
10	Valve	47563		for "EU" models	49883
11	O-Ring (2 req'd)	47576	* Indicates Not Illustrated.		
12	Throttle	47567			
13	Block Assembly	46619			
14	Snap Ring (3 req'd)	Y110-2			
15	Screen (2 req'd)	47497			
16	Air Block	47565			
17	Motor Assembly	4614921			
18	Ball Bearing	46110			
19	End Plate	47564			
20	Pin	Y124-31			
21	Cylinder Assembly (includes item 20)	47573			
22	Rotor	4334884			
23	Blade (3 req'd)	46102			
24	End Plate	47560			
25	Ball Bearing	47559			
26	Collet Body	47570			

Parts and Maintenance

When tool life has expired, it is recommended that the tool be disassembled, degreased and parts separated by material for proper recycling.

Tool repair and maintenance should only be carried out by an authorized Service Center.

Refer all communications to the nearest **Ingersoll Rand** office or distributor.

Related Documentation

Manuals can be downloaded from ingersollrandproducts.com

For additional information, refer to:

Product Safety Information Manual 04580288.

Product Information Manual 04585170.

Maintenance Information Manual 16574949.